


# RNAV (RNP) Z RWY 7R

LOS ANGELES INTL (LAX)

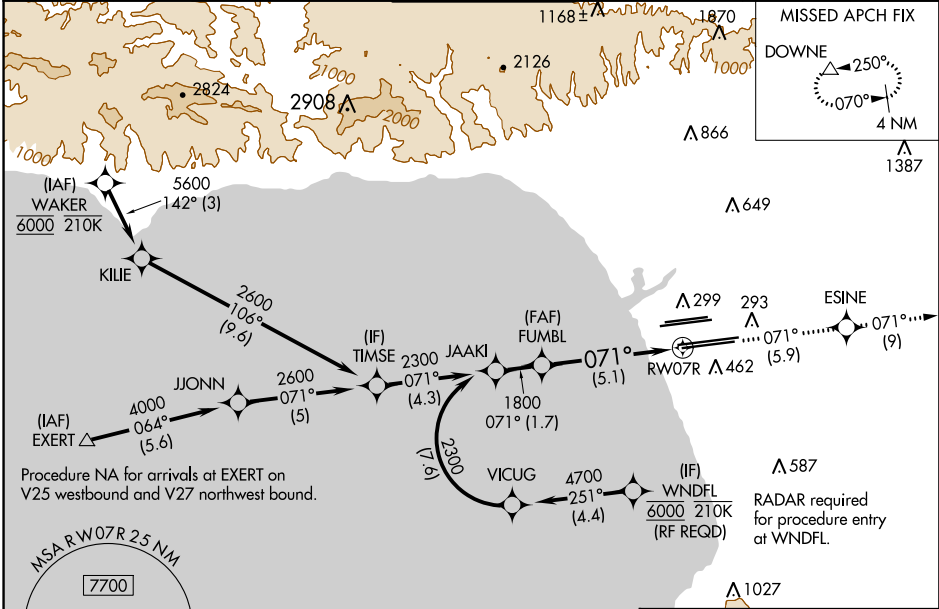
|                        |  |
|------------------------|--|
| APP CRS<br><b>071°</b> | Rwy Idg <b>11095</b><br>TDZE <b>128</b><br>Apt Elev <b>128</b> |
|------------------------|--|

**▽** For uncomputerized Baro-VNAV systems, procedure NA below 5°C (41°F) or above 54°C (130°F). For inop MALSR, increase RNP 0.11 all Cats visibility to RVR 4500. Simultaneous approach authorized.

MALSR 

MISSED APPROACH: Climb to 3000 on track 071° to ESINE and on track 071° to DOWNE and hold.

|   |  |  |  |   |   |       |
|---|--|--|--|---|---|-------|
| D-ATIS<br>ARR <b>133.8</b><br>DEP <b>135.65</b> | SOCAL APP CON<br><b>124.3 363.2</b><br>(APCH FM WEST)<br><b>124.5 235.975</b><br>(225°-044°) | <b>124.9 269.0</b><br>(090°-224°)<br><b>128.5 360.7</b><br>(045°-089°) | LOS ANGELES TOWER<br><b>N 133.9 239.3</b><br><b>S 120.95 379.1</b> | GND CON<br><b>N 121.65 327.0</b><br><b>S 121.75 327.0</b><br><b>W 121.4 327.0</b> | CLNC DEL<br><b>120.35</b><br><b>327.0</b> | CPDLC |
|---|--|--|--|---|---|-------|


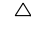


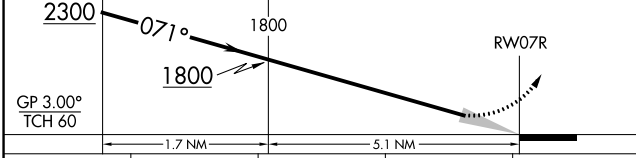
SW-3, 10 OCT 2019 to 07 NOV 2019

SW-3, 10 OCT 2019 to 07 NOV 2019

|          |                   |
|----------|-------------------|
| ELEV 128 | <b>D</b> TDZE 128 |
|----------|-------------------|

VGSI and RNAV glidepath not coincident (VGSI Angle 3.00/TCH 57).

|           |   |         |   |
|-----------|---|---------|---|
| 3000      | ESINE   | tr 071° | DOWNE   |
| ↑ tr 071° |  | tr 071° |  |



| CATEGORY    | A | B      | C           | D |
|-------------|---|--------|-------------|---|
| RNP 0.11 DA |   | 414/24 | 286 (300-½) |   |
| RNP 0.30 DA |   | 538/45 | 410 (500-¾) |   |

## AUTHORIZATION REQUIRED

TDZ/CL Rwy's 6R, 7L, 24R, and 25L  
HIRL all Rwy's