

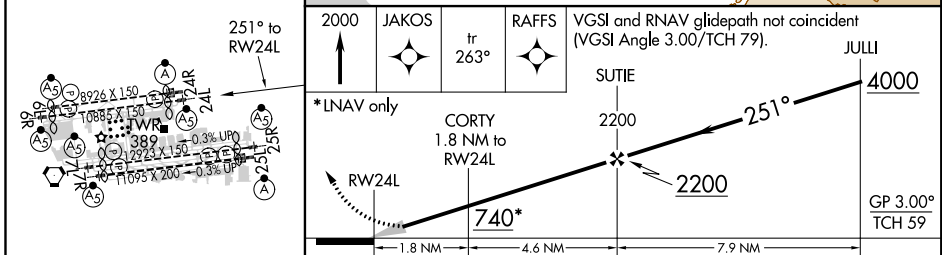
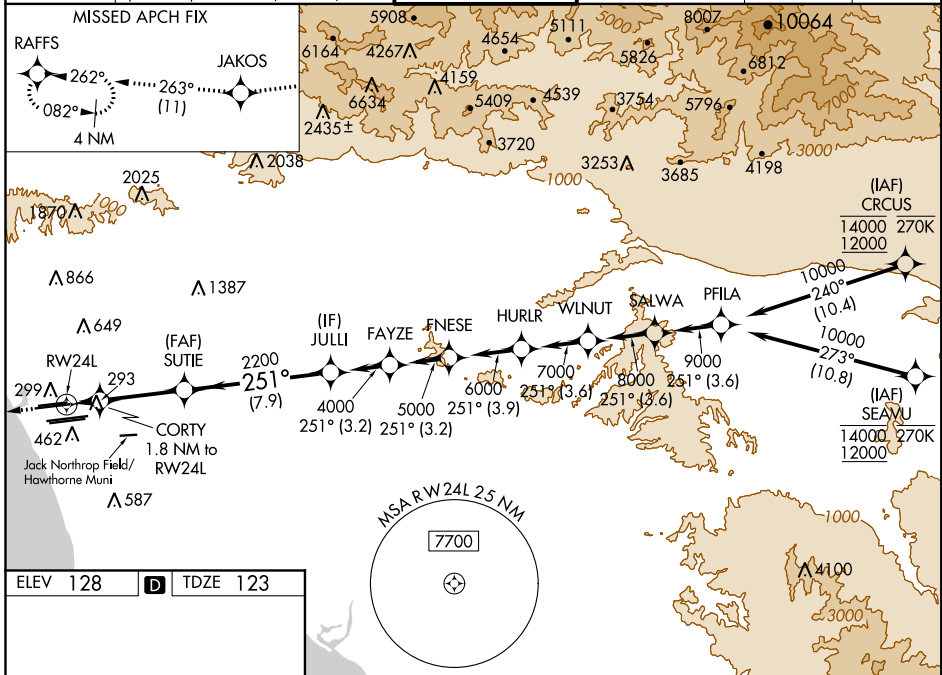
RNAV (GPS) Y RWY 24L

LOS ANGELES INTL (LAX)

WAAS CH 56407 W24B	APP CRS 251°	Rwy Idg TDZE Apt Elev	9483 123 128
--	------------------------	-----------------------------	---

RNP APCH.	MALSR 	MISSED APPROACH: Climb to 2000 direct JAKOS and track 263° to RAFFS and hold.
▽ For uncompensated Baro-VNAV systems, LNAV/VNAV NA below 5°C (41°F) or above 54°C (130°F). Simultaneous approach authorized. LNAV procedure NA during simultaneous operations. Use of FD or AP providing RNAV track guidance required during simultaneous operations. Simultaneous approach authorized with HHR. # RVR 1800 authorized with use of FD or AP or HUD to DA.		

D-ATIS ARR 133.8 DEP 135.65	SOCAL APP CON 124.3 363.2 (APCH FM WEST) 124.5 235.975 (223°-044°)	124.9 269.0 (090°-224°) 128.5 360.7 (043°-089°)	LOS ANGELES TOWER N 133.9 239.3 S 120.95 379.1	GND CON N 121.65 327.0 S 121.75 327.0 W 121.4 327.0	CLNC DEL 120.35 327.0	CPDLC
---	--	--	--	---	---	-------



ELEV 128	D	TDZE 123			
TDZ/CL Rwy's 6R, 7L, 24R, and 25L HIRL all Rwy's	CATEGORY LPV DA# LNAV/VNAV DA LNAV MDA	A 323/24 608/60 660/24	B 200 (200-½) 485 (500-1¼) 537 (600-½)	C 200 (200-½) 485 (500-1¼) 660/55	D 270K 12000 270K 12000 537 (600-1)

SW-3, 10 OCT 2019 to 07 NOV 2019

SW-3, 10 OCT 2019 to 07 NOV 2019