

WAAS CH 69307 W24A	APP CRS 251°	Rwy Idg TDZE Apt Elev	8925 122 128
--	------------------------	-----------------------------	---

RNAV (GPS) Y RWY 24R

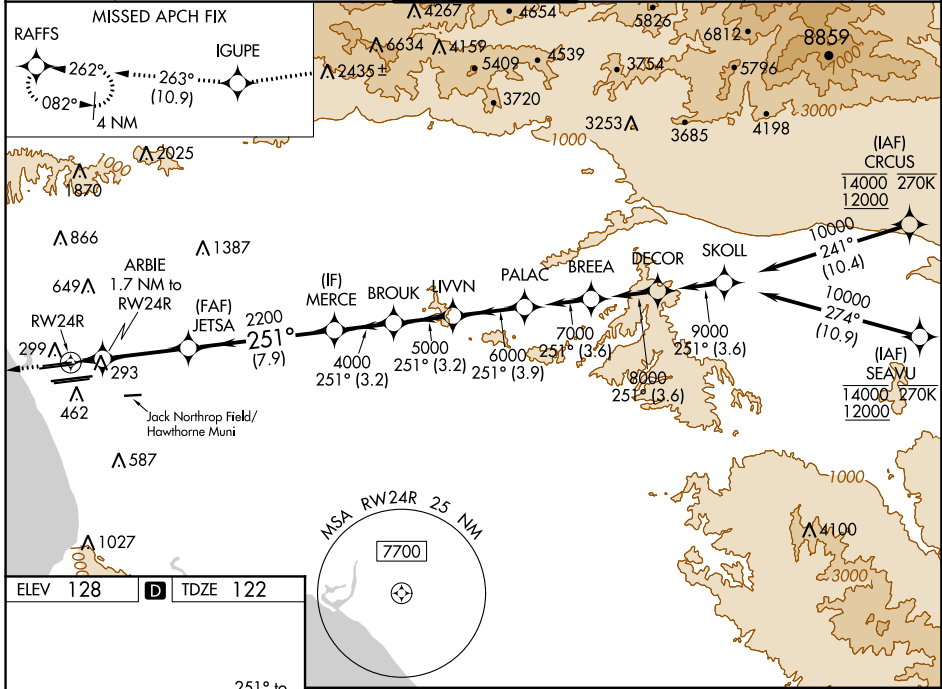
LOS ANGELES INTL (LAX)

⚠ For uncompensated Baro-VNAV systems, LNAV/VNAV NA below 6°C (43°F) or above 54°C (130°F). DME/DME RNP-0.3 NA. Simultaneous approach authorized. Simultaneous approach authorized with HHR. LNAV procedure NA during simultaneous operations. Use of FD or AP providing RNAV track guidance required during simultaneous operations. For inop ALS, increase LNAV/VNAV all Cts visibility to 1½ SM, and LNAV Cat C/D visibility to 1¾ SM.



MISSED APPROACH: Climb to 2000 direct IGUPE and on track 263° to RAFFS and hold.

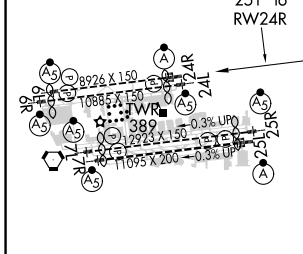
D-ATIS ARR 133.8 DEP 135.65	SOCAL APP CON 124.3 363.2 [APCH FM WEST] 124.5 235.975 [225°-044°]	124.9 269.0 [090°-224°] 128.5 360.7 [045°-089°]	LOS ANGELES TOWER N 133.9 239.3 S 120.95 379.1	GND CON N 121.65 327.0 S 121.75 327.0 W 121.4 327.0	CLNC DEL 120.35 327.0	CPDLC
---	--	--	--	---	---	-------



SW-3, 10 OCT 2019 to 07 NOV 2019

SW-3, 10 OCT 2019 to 07 NOV 2019

ELEV 128	D	TDZE 122
----------	----------	----------



2000	IGUPE	tr 263°	RAFFS	VGSI and RNAV glidepath not coincident (VGSI Angle 3.00/TCH 73).										
<table border="1"> <tr> <td>2000</td> <td>IGUPE</td> <td>tr 263°</td> <td>RAFFS</td> <td>VGSI and RNAV glidepath not coincident (VGSI Angle 3.00/TCH 73).</td> </tr> <tr> <td>2000</td> <td>IGUPE</td> <td>tr 263°</td> <td>RAFFS</td> <td>VGSI and RNAV glidepath not coincident (VGSI Angle 3.00/TCH 73).</td> </tr> </table>					2000	IGUPE	tr 263°	RAFFS	VGSI and RNAV glidepath not coincident (VGSI Angle 3.00/TCH 73).	2000	IGUPE	tr 263°	RAFFS	VGSI and RNAV glidepath not coincident (VGSI Angle 3.00/TCH 73).
2000	IGUPE	tr 263°	RAFFS	VGSI and RNAV glidepath not coincident (VGSI Angle 3.00/TCH 73).										
2000	IGUPE	tr 263°	RAFFS	VGSI and RNAV glidepath not coincident (VGSI Angle 3.00/TCH 73).										

TDZ/CL Rwy 6s, 7L, 24R, and 25L HIRL all Rwys	LPV DA	322/18	200 (200-½)
	LNAV/VNAV DA	589/60	467 (500-1¼)
	LNAV MDA	640/24	518 (600-½) 640/55 518 (600-1)