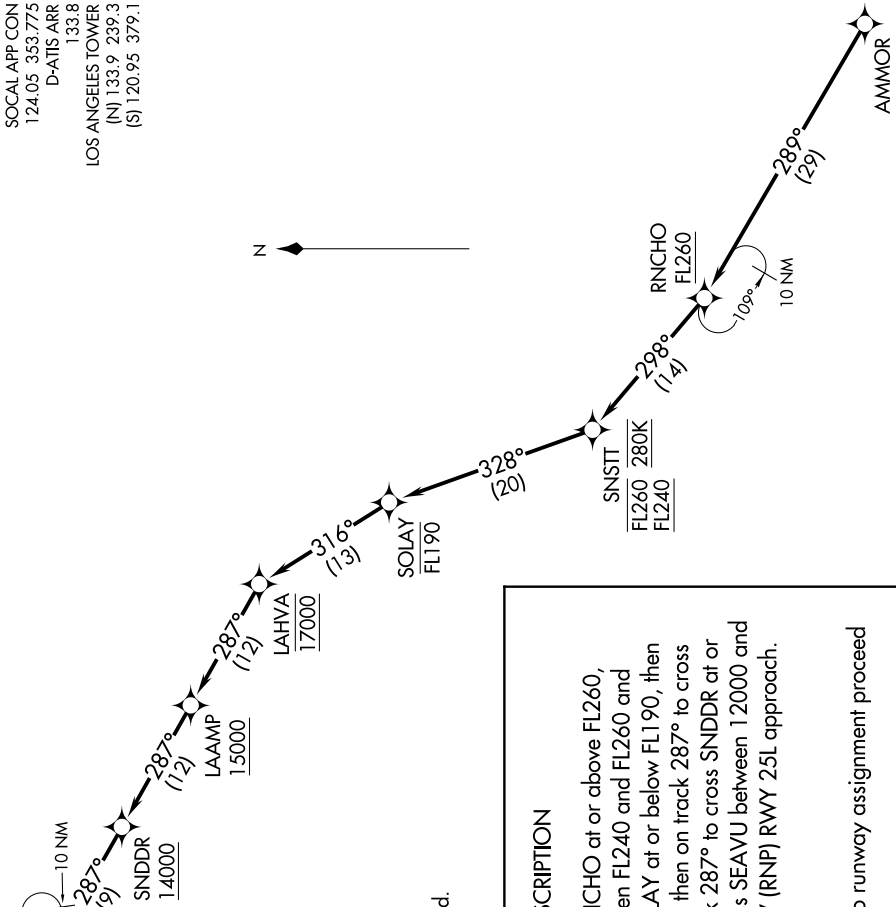


SW-3, 10 OCT 2019 to 07 NOV 2019



SEAVU  
14000 270K  
12000

10 NM

250°

070°

287° (19)

SNDDR 14000

287° (12)

LAAMP 15000

287° (12)

LAHVA 17000

316° (13)

SOLAY FL190

328° (20)

SNSTT FL260 280K FL240

298° (14)

RNCHO FL260

289° (29)

AMMOR

109°

10 NM

NOTE: RADAR required.

NOTE: RNAV 1.

NOTE: DME/DME/IRU or GPS required.

NOTE: Turbojet aircraft only.

NOTE: SUNSTT STAR ATC assigned only.

NOTE: Los Angeles landing west traffic.

NOTE: Expect Rwy 25L unless otherwise assigned.

NOTE: Chart not to scale.

**ARRIVAL ROUTE DESCRIPTION**

From AMMOR on track 289° to cross RNCHO at or above FL260, then on track 298° to cross SNSTT between FL240 and FL260 and at 280K, then on track 328° to cross SOLAY at or below FL190, then on track 316° to cross LAHVA at 17000, then on track 287° to cross LAAMP at or above 15000, then on track 287° to cross SNDDR at or above 14000, then on track 287° to cross SEAVU between 12000 and 14000 and at 270K. Expect ILS or RNAV (RNP) RWY 25L approach.

**LOST COMMUNICATIONS**

In the event of lost communication prior to runway assignment proceed on ILS or LOC RWY 25L.

SW-3, 10 OCT 2019 to 07 NOV 2019