

SUMMR TWO DEPARTURE (RNAV)

AL-237 (FAA)

LOS ANGELES INTL (LAX)
LOS ANGELES, CALIFORNIA

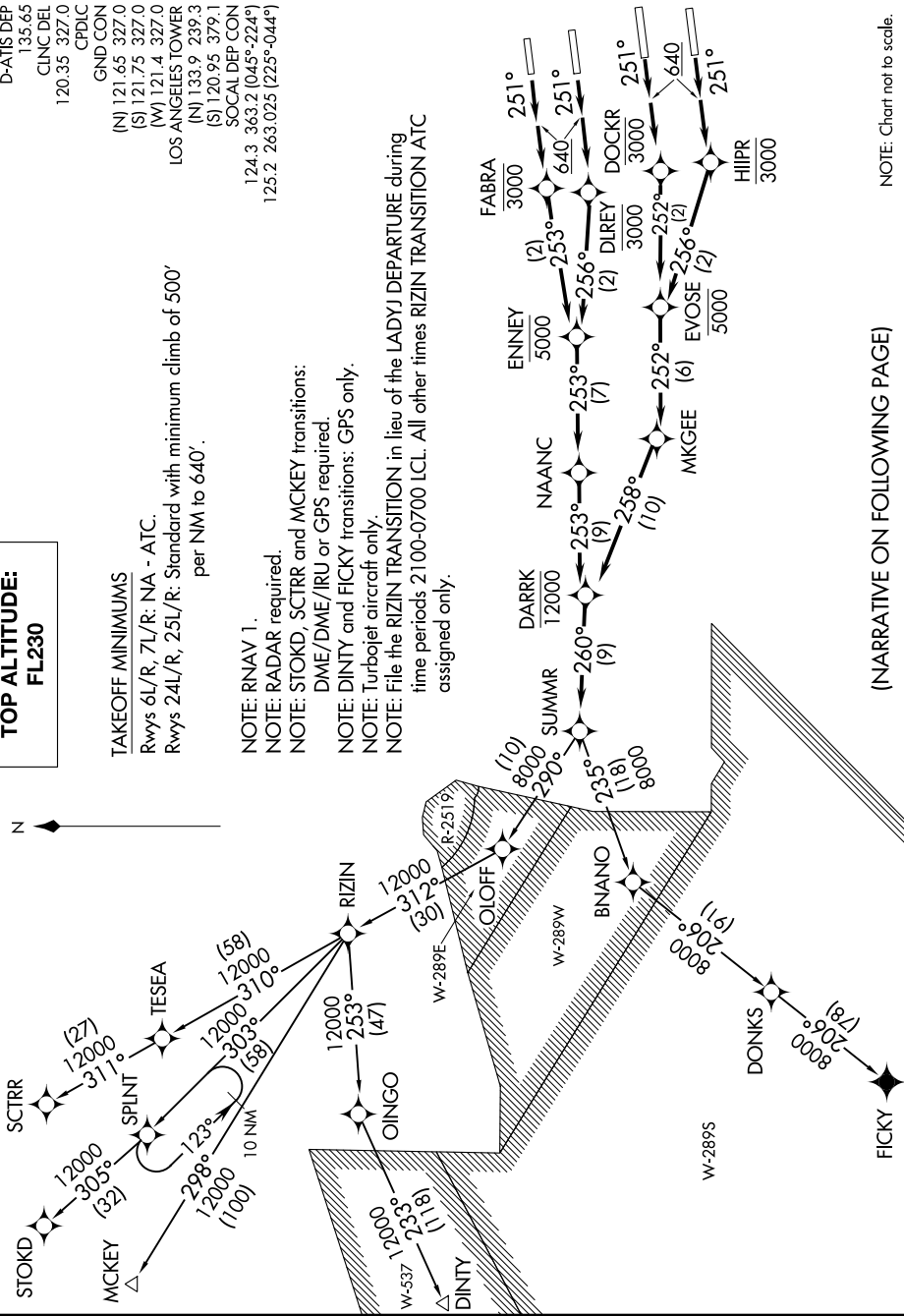
1610Z 10N 20 01 1610Z 2019 10 OCT 2019 10:00Z 19283

TOP ALTITUDE:
FL230

TAKEOFF MINIMUMS
Rwys 6L/R, 7L/R: NA - ATC.
Rwys 24L/R, 25L/R: Standard with minimum climb of 500' per NM to 640'.

NOTE: RNAV 1.
NOTE: RADAR required.
NOTE: STOKD, SCTRR and MCKEY transitions:
DME/DME/IRU or GPS required.
NOTE: DINTY and FICKY transitions: GPS only.
NOTE: Turbojet aircraft only.
NOTE: File the RIZIN TRANSITION in lieu of the LADYJ DEPARTURE during time periods 2100-0700 LCL. All other times RIZIN TRANSITION ATC assigned only.

D-ATIS DEP 135.65
CLINC DEL 120.35 327.0
CPDLC
GND CON (N) 121.65 327.0
(S) 121.75 327.0
(W) 121.4 327.0
LOS ANGELES TOWER (N) 133.9 239.3
(S) 120.95 379.1
SOCAL DEP CON 124.3 363.2 (045°-224°)
125.2 263.025 (225°-044°)



SUMMR TWO DEPARTURE (RNAV)

LOS ANGELES, CALIFORNIA
LOS ANGELES INTL (LAX)

(NARRATIVE ON FOLLOWING PAGE)

NOTE: Chart not to scale.

SW-3, 10 OCT 2019 to 07 NOV 2019