

TUSTI TWO DEPARTURE (RNAV)

AL-237 (FAA)

LOS ANGELES INTL (LAX)
LOS ANGELES, CALIFORNIA

6102' N ON Z of 61.00 OCT 2019 to 07 NOV 2019

TOP ALTITUDE:
17000

TAKEOFF MINIMUMS

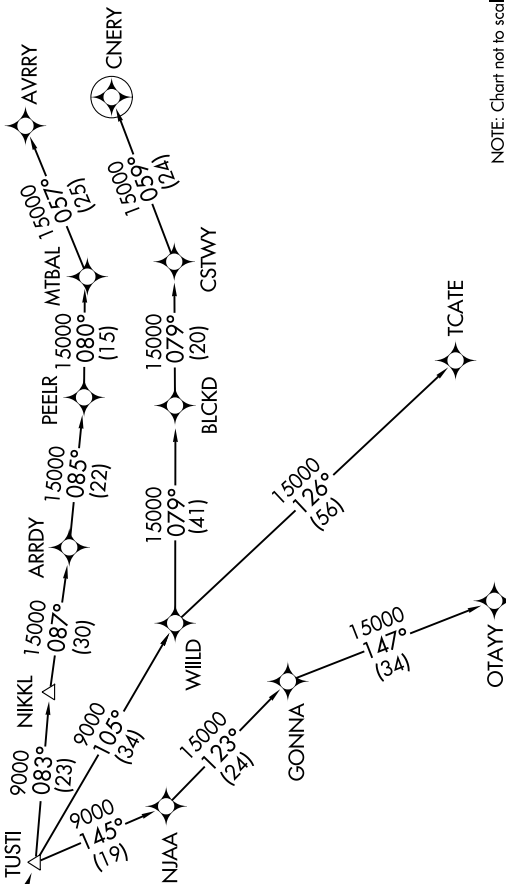
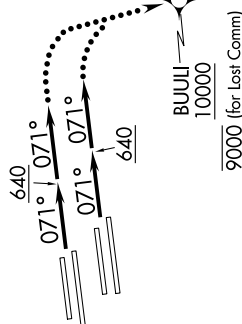
Rwys 6L/R, 7L/R: Standard with minimum climb of 500' per NM to 640.
Rwys 24L/R, 25L/R: NA-ATC.

- NOTE: DME/DME/IRU or GPS required.
- NOTE: RNAV 1.
- NOTE: RADAR required.
- NOTE: Turbojet aircraft only.

D-ATIS DEP 135.65
CLNC DEL 120.35 327.0
CPDIC
GND CON
(N) 121.65 327.0
(S) 121.75 327.0
(W) 121.4 327.0
LOS ANGELES TOWER
(N) 133.9 239.3
(S) 120.95 379.1
SOCAL DEP CON
124.3 363.2 (045°-224°)
125.2 263.025 (225°-044°)



TTRUE
LVELL
WURMO



NOTE: Chart not to scale.

(NARRATIVE ON FOLLOWING PAGE)

SW-3, 10 OCT 2019 to 07 NOV 2019