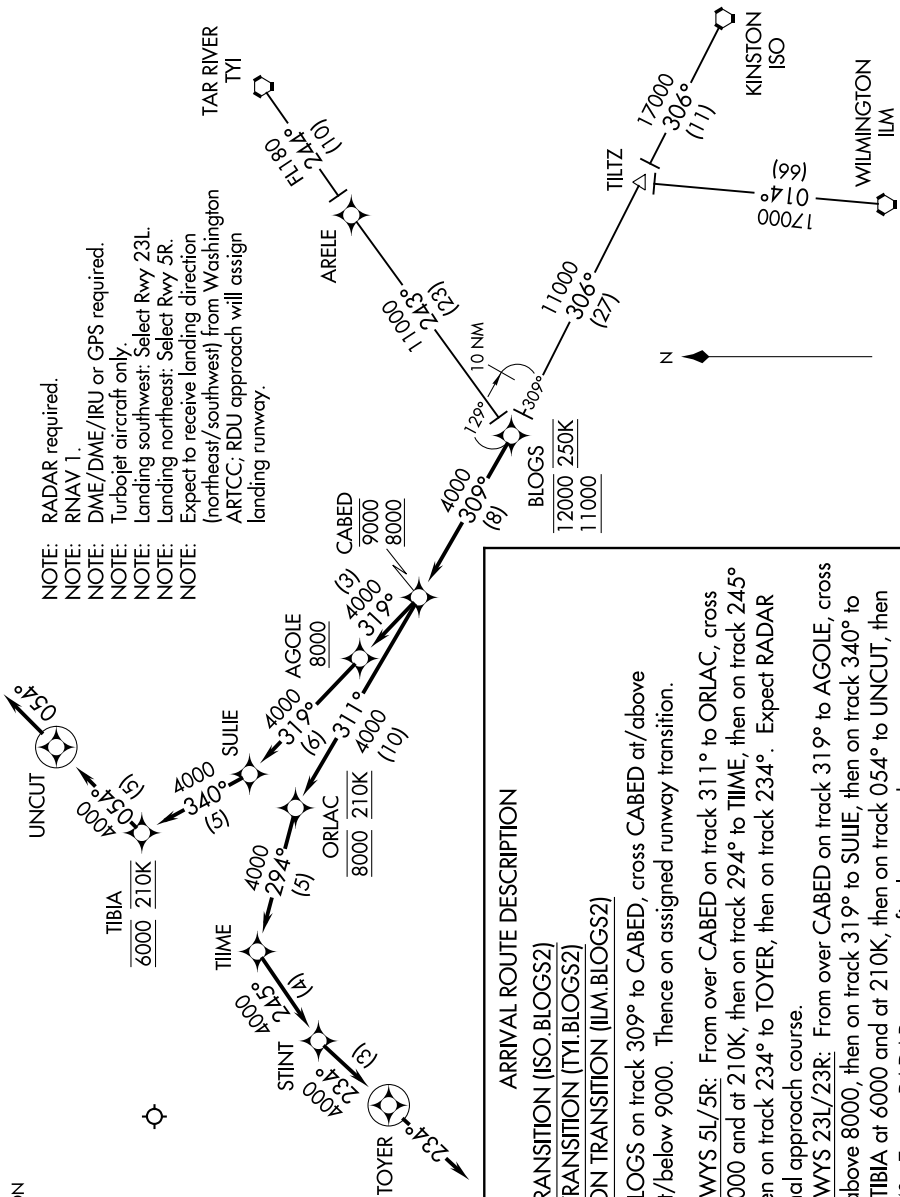


BLOGS TWO ARRIVAL (RNAV)

SE-2. 10 OCT 2019 to 07 NOV 2019

RALEIGH APP CON
124.95 318.2
D-ATIS
123.8

NOTE: RADAR required.
 NOTE: RNAV 1.
 NOTE: DME/DME/IRU or GPS required.
 NOTE: Turbojet aircraft only.
 NOTE: Landing southwest: Select Rwy 23L.
 NOTE: Landing northeast: Select Rwy 5R.
 NOTE: Expect to receive landing direction (northeast/southwest) from Washington ARTCC; RDU approach will assign landing runway.



ARRIVAL ROUTE DESCRIPTION

KINSTON TRANSITION (ISO.BLOGS2)

TAR RIVER TRANSITION (TYI.BLOGS2)

WILMINGTON TRANSITION (ILM.BLOGS2)

From over **BLOGS** on track 309° to **CABED**, cross **CABED** at/above 8000 and at/below 9000. Thence on assigned runway transition.

LANDING RWYS 5L/5R: From over **CABED** on track 311° to **ORLAC**, cross **ORLAC** at 8000 and at 210K, then on track 294° to **TIME**, then on track 245° to **STINT**, then on track 234° to **TOYER**, then on track 234°. Expect **RADAR** vectors to final approach course.

LANDING RWYS 23L/23R: From over **CABED** on track 319° to **AGOLE**, cross **AGOLE** at/above 8000, then on track 319° to **SUJIE**, then on track 340° to **TIBIA**, cross **TIBIA** at 6000 and at 210K, then on track 054° to **UNCUT**, then on track 054°. Expect **RADAR** vectors to final approach course.

NOTE: Chart not to scale.

BLOGS TWO ARRIVAL (RNAV)

SE-2. 10 OCT 2019 to 07 NOV 2019