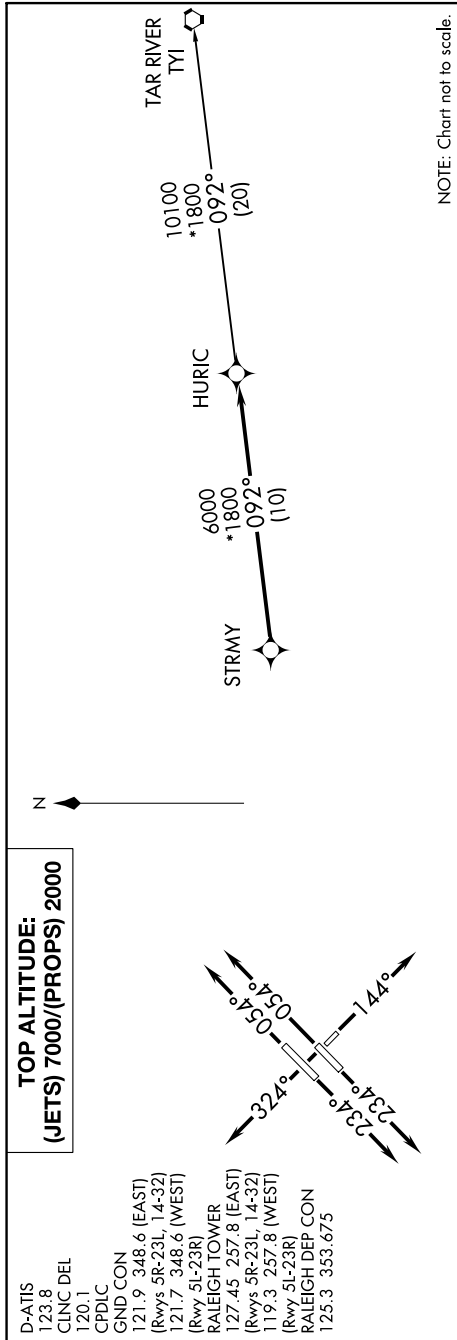


# HURIC THREE DEPARTURE (RNAV)

SE-2. 10 OCT 2019 to 07 NOV 2019



NOTE: Chart not to scale.

## DEPARTURE ROUTE DESCRIPTION

**TAKEOFF RWYS 5L/5R:** Climb heading 054° or as assigned by ATC, expect RADAR vectors to STRMY, thence. . . .

**TAKEOFF Rwy 14:** Climb heading 144° or as assigned by ATC, expect RADAR vectors to STRMY, thence. . . .

**TAKEOFF RWYS 23L/23R:** Climb heading 234° or as assigned by ATC, expect RADAR vectors to STRMY, thence. . . .

**TAKEOFF Rwy 32:** Climb heading 324° or as assigned by ATC, expect RADAR vectors to STRMY, thence. . . .

. . . on track 092° to HURIC, turbojets maintain 7000, propellers maintain 2000. Expect clearance to filed altitude within ten minutes after departure.

TAR RIVER TRANSITION (HURIC3.TYI)

## TAKEOFF MINIMUMS

Rwys 5L, 5R, 14, 23R: Standard with minimum climb of 500' per NM to 940.

Rwy 23L: Standard with minimum climb of 500' per NM to 1100.

Rwy 32: 300-1 with minimum climb of 500' per NM to 940.

**NOTE:** Transponder code will be assigned via PDC or Raleigh clearance delivery.

**NOTE:** If unable to accept climb rate, advise ATC on initial contact.

**NOTE:** RNAV 1.

**NOTE:** DME/DME/IRU or GPS required.

**NOTE:** RADAR required.

SE-2. 10 OCT 2019 to 07 NOV 2019