

LOC/DME I-DMP <b>111.7</b> Chan <b>54</b>	APP CRS <b>234°</b>	Rwy Idg TDZE Apt Elev <b>10000</b> <b>409</b> <b>435</b>
---	------------------------	---

# ILS RWY 23R (CAT II & III)

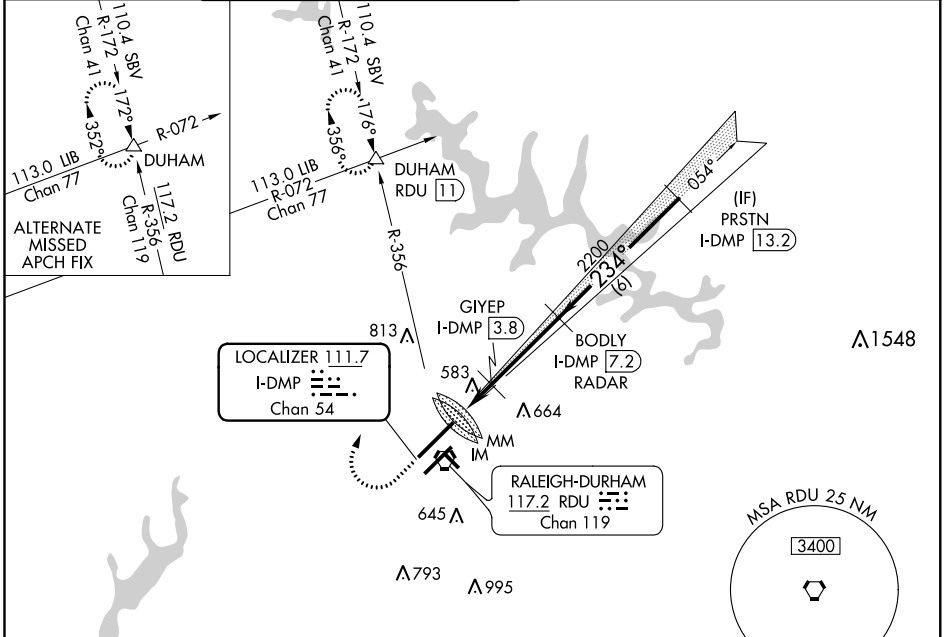
RALEIGH-DURHAM INTL (RDU)

RADAR required for procedure entry, DME or RADAR required. ALSF-2

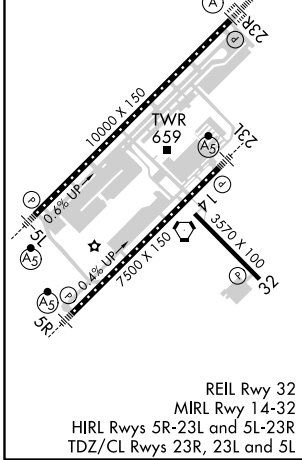
MISSED APPROACH: Climb to 1000 then climbing right turn to 2200 on heading 030° and on RDU VORTAC R-356 to DUHAM INT/RDU 11 DME and hold.

Simultaneous approach authorized.

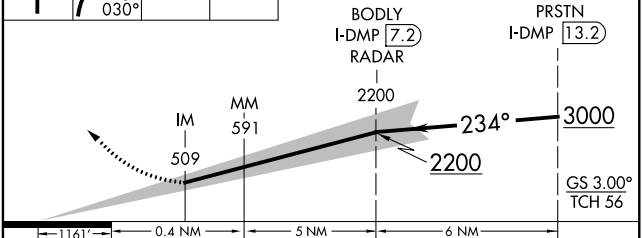
D-ATIS <b>123.8</b>	RALEIGH APP CON <b>128.3 307.9</b>	(EAST) RALEIGH TOWER (WEST) <b>127.45 257.8</b> <b>119.3 257.8</b> Rwys 5R-23L and 1-4-32 Rwy 5L-23R	(EAST) GND CON (WEST) <b>121.9 348.6</b> <b>121.7 348.6</b> Rwys 5R-23L and 1-4-32 Rwy 5L-23R	CLNC DEL <b>120.1</b>	CPDLC
------------------------	---------------------------------------	--	---	--------------------------	-------



ELEV <b>435</b>	<b>D</b>	TDZE <b>409</b>
-----------------	----------	-----------------



1000	2200	RDU R-356	DUHAM	VGSI and ILS glidepath not coincident (VGSI Angle 3.00/TCH 69).
------	------	-----------	-------	---



CATEGORY	A	B	C	D
S-ILS 23R	CAT II RA 105/12 100 DA 509			
S-ILS 23R	CAT III RVR 06			

## CATEGORY II & III ILS - SPECIAL AIRCREW & AIRCRAFT CERTIFICATION REQUIRED

SE-2, 10 OCT 2019 to 07 NOV 2019

SE-2, 10 OCT 2019 to 07 NOV 2019