

LOC/DME I-LEI 108.5 Chan 22	APP CRS 234°	Rwy Idg 7500 TDZE 435 Apt Elev 435
---	------------------------	---

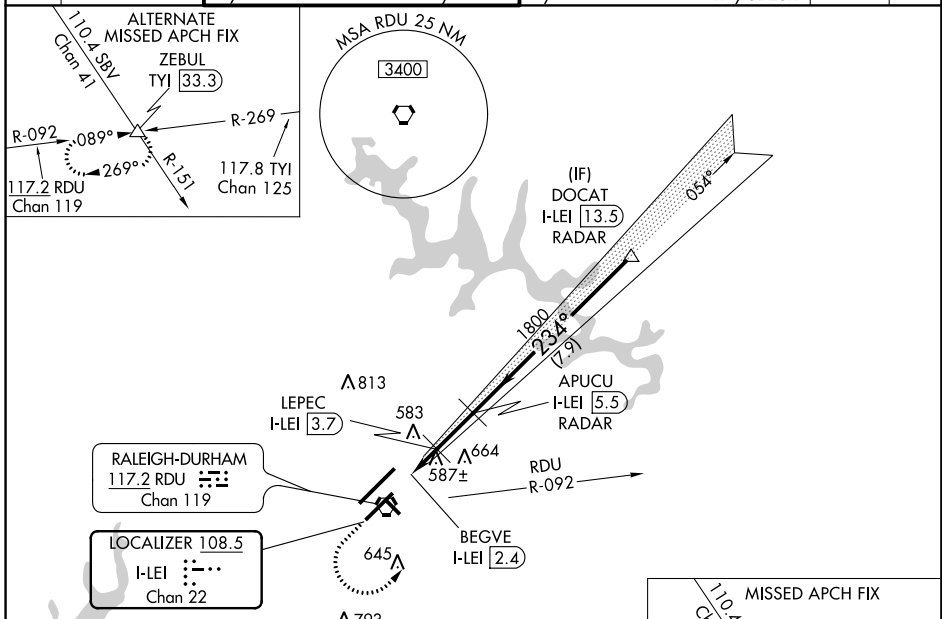
ILS or LOC RWY 23L

RALEIGH-DURHAM INTL (RDU)

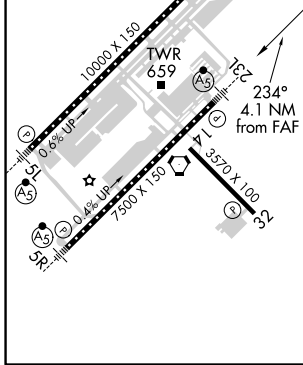
RADAR required for procedure entry. DME required for LOC only.

<p>Simultaneous approach authorized. For inop ALS, increase S-ILS 23L all Cat visibility to RVR 5500. For inop ALS, increase S-LOC-23L Cat C/D visibility to 2½ SM. Localizer unusable for coupled approaches below 1100 or within 2 NM of threshold.</p>	MALSR	MISSED APPROACH: Climb to 1100 then climbing left turn to 2600 on heading 050° and RDU VORTAC R-092 to ZEBUL INT and hold.

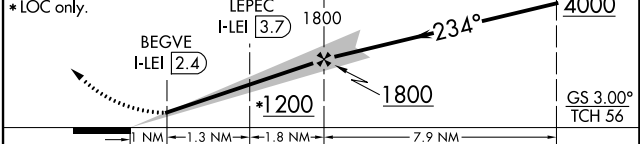
D-ATIS	RALEIGH APP CON	(EAST) RALEIGH TOWER (WEST)	(EAST) GND CON	(WEST)	CLNC DEL	CPDLC
123.8	128.3 307.9	127.45 257.8 Rwys 5R-23L and 14-32	119.3 257.8 Rwy 5L-23R	121.9 348.6 Rwys 5R-23L and 14-32	121.7 348.6 Rwy 5L-23R	120.1



ELEV 435	D	TDZE 435
REIL Rwy 32		
MIRL Rwy 14-32		
HIRL Rwys 5R-23L and 5L-23R		
TDZ/CL Rwys 23R, 23L and 5L		



1100	2600	ZEBUL	DOCAT I-LEI (13.5) RADAR
↑	hdg 050°	RDU R-092	APUCU I-LEI (5.5) RADAR
*LOC only.		BEGVE I-LEI (2.4)	Localizer unusable from 1 NM from threshold.



CATEGORY	A	B	C	D
S-ILS 23L	806/35 371 (400-5/8)			
S-LOC 23L	840/40 405 (500-3/4)			
CIRCLING	960-1¼	525 (600-1¼)	1040-1¾ 605 (700-1¾)	1180-2½ 745 (800-2½)

SE-2, 10 OCT 2019 to 07 NOV 2019

SE-2, 10 OCT 2019 to 07 NOV 2019