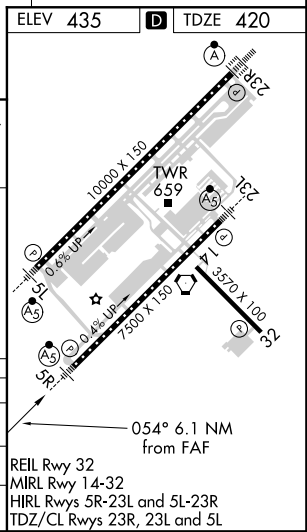
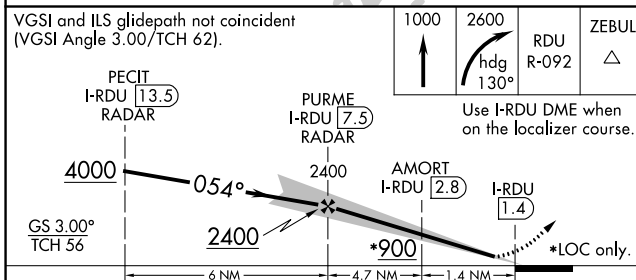
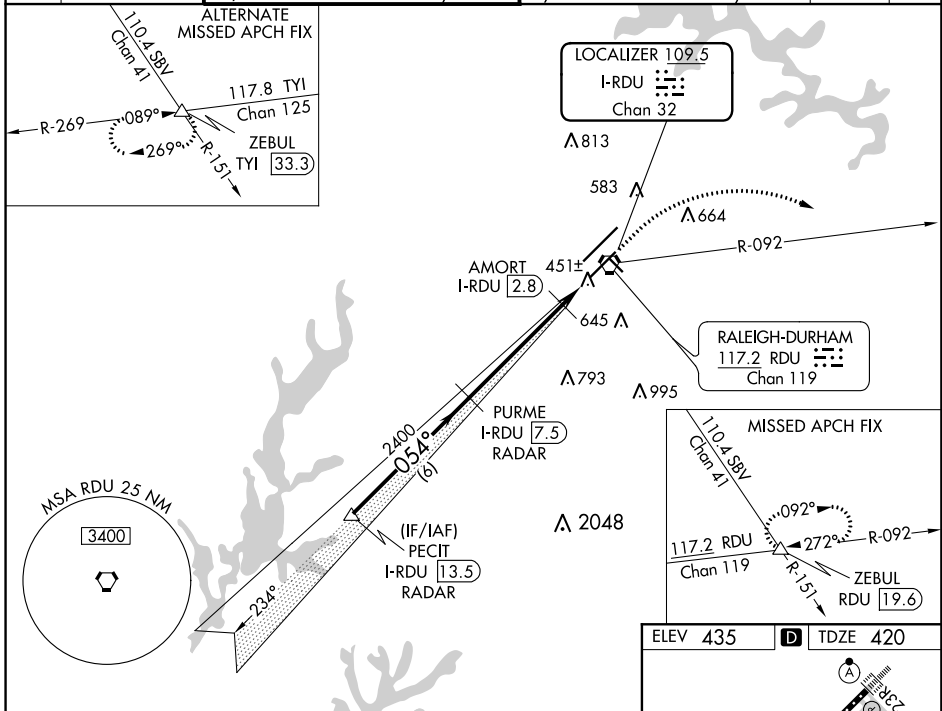


LOC/DME I-RDU 109.5 Chan 32	APP CRS 054°	Rwy Idg 7500 TDZE 420 Apt Elev 435
--	------------------------	---

ILS or LOC RWY 5R

RALEIGH-DURHAM INTL (RDU)

RADAR required for procedure entry. DME required for LOC only.		MALSR 		MISSED APPROACH: Climb to 1000 then dimbing right turn to 2600 on heading 130° and on RDU VORTAC R-092 to ZEBUL INT/RDU 19.6 DME and hold.		
Simultaneous approach authorized. # RVR 1800 authorized with use of FD or AP or HUD to DA.						
D-ATIS 123.8	RALEIGH APP CON 128.3 307.9	(EAST) RALEIGH TOWER (WEST) 127.45 257.8 Rwys 5R-23L and 14-32	(EAST) GND CON (WEST) 121.9 348.6 Rwys 5R-23L and 14-32	(WEST) 121.7 348.6 Rwy 5L-23R	CLNC DEL 120.1	CPDLC



CATEGORY	A	B	C	D
S-ILS 5R #	620/24		200 (200-½)	
S-LOC 5R	760/24 340 (400-½)		760/26 340 (400-½)	
CIRCLING	960-1 525 (600-1)		1020-1½ 585 (600-1½)	
			1180-2½ 745 (800-2½)	

SE-2, 10 OCT 2019 to 07 NOV 2019

SE-2, 10 OCT 2019 to 07 NOV 2019