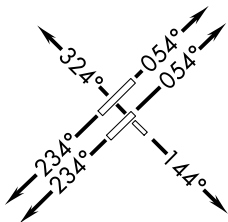


ROZBO THREE DEPARTURE (RNAV)

TOP ALTITUDE:
(JETS) 7000/(PROPS) 2000

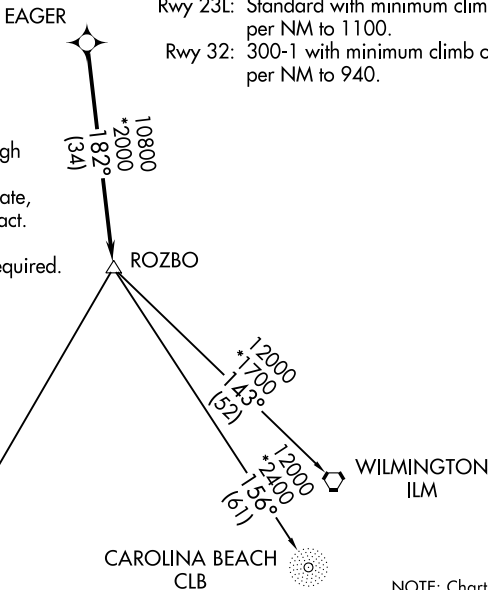
D-ATIS
123.8
CLNC DEL
120.1
CPDLC
GND CON
121.9 348.6 (EAST)
(Rwys 5R-23L, 14-32)
121.7 348.6 (WEST)
(Rwy 5L-23R)
RALEIGH TOWER
127.45 257.8 (EAST)
(Rwys 5R-23L, 14-32)
119.3 257.8 (WEST)
(Rwy 5L-23R)
RALEIGH DEP CON
125.3 353.675



TAKEOFF MINIMUMS

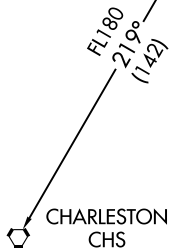
Rwys 5L, 5R, 14, 23R: Standard with minimum climb of 500' per NM to 940.
Rwy 23L: Standard with minimum climb of 500' per NM to 1100.
Rwy 32: 300-1 with minimum climb of 500' per NM to 940.

- NOTE: Transponder code will be assigned via PDC or Raleigh clearance delivery.
NOTE: If unable to accept climb rate, advise ATC on initial contact.
NOTE: RNAV 1.
NOTE: DME/DME/IRU or GPS required.
NOTE: RADAR required.



SE-2, 10 OCT 2019 to 07 NOV 2019

SE-2, 10 OCT 2019 to 07 NOV 2019



DEPARTURE ROUTE DESCRIPTION

TAKEOFF RWYS 5L/R: Climb heading 054° or as assigned by ATC, expect RADAR vectors to EAGER then on track 182° to ROZBO, thence. . . .
TAKEOFF RWY 14: Climb heading 144° or as assigned by ATC, expect RADAR vectors to EAGER then on track 182° to ROZBO, thence. . . .
TAKEOFF RWYS 23L/R: Climb heading 234° or as assigned by ATC, expect RADAR vectors to EAGER then on track 182° to ROZBO, thence. . . .
TAKEOFF RWY 32: Climb heading 324° or as assigned by ATC, expect RADAR vectors to EAGER then on track 182° to ROZBO, thence. . . .

. . . on assigned transition, turbojets maintain 7000, propellers maintain 2000. Expect clearance to filed altitude within ten minutes after departure.

CAROLINA BEACH TRANSITION (ROZBO3.CLB)
CHARLESTON TRANSITION (ROZBO3.CHS)
WILMINGTON TRANSITION (ROZBO3.ILM)

NOTE: Chart not to scale.

ROZBO THREE DEPARTURE (RNAV)