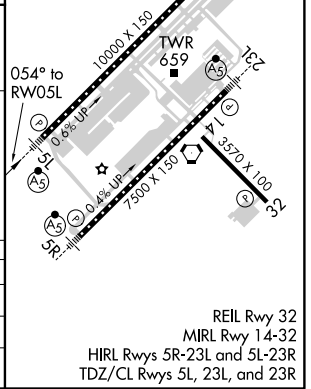
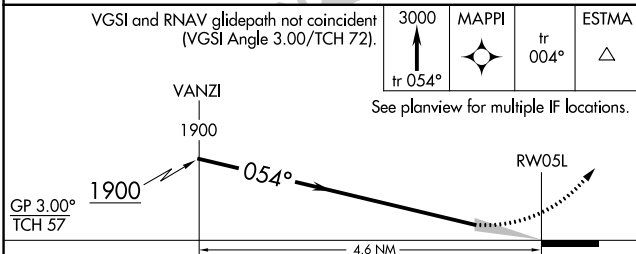
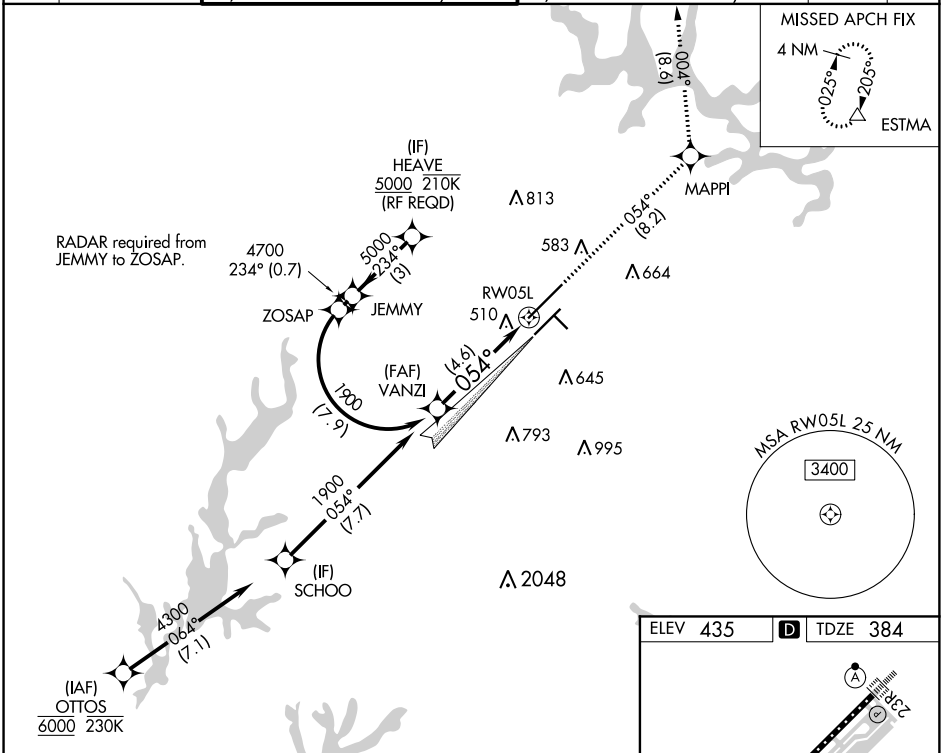


APP CRS	Rwy Idg	10000
054°	TDZE	384
	Apt Elev	435

RNAV (RNP) Z RWY 5L

RALEIGH-DURHAM INTL (RDU)

RNP AR APCH.		(EAST) RALEIGH TOWER (WEST) 127.45 257.8 119.3 257.8 Rwys 5R-23L and 14-32 Rwy 5L-23R		(EAST) GND CON (WEST) 121.9 348.6 121.7 348.6 Rwys 5R-23L and 14-32 Rwy 5L-23R		CLNC DEL	CPDLC
▼ For uncompensated Baro-VNAV systems, LNAV/VNAV NA below -9°C or above 47°C. Simultaneous approach authorized. Use of FD or AP providing RNAV track guidance required during simultaneous operations. For inop ALS, increase RNP 0.10 all Cats visibility to RVR 6000 and RNP 0.30 all Cats visibility to 1%.		MALSRL		MISSED APPROACH: Climb to 3000 on track 054° to MAPPI and on track 004° to ESTMA and hold.			



CATEGORY	A	B	C	D
RNP 0.10 DA		727/30	343 (300-5%)	
RNP 0.30 DA		821/50	437 (400-1)	

AUTHORIZATION REQUIRED

REIL Rwy 32
MIRL Rwy 14-32
HIRL Rwys 5R-23L and 5L-23R
TDZ/CL Rwys 5L, 23L, and 23R

SE-2, 10 OCT 2019 to 07 NOV 2019

SE-2, 10 OCT 2019 to 07 NOV 2019