

APP CRS	Rwy Idg	7500
054°	TDZE	420
	Apt Elev	435

RNAV (RNP) Z RWY 5R

RALEIGH-DURHAM INTL (RDU)

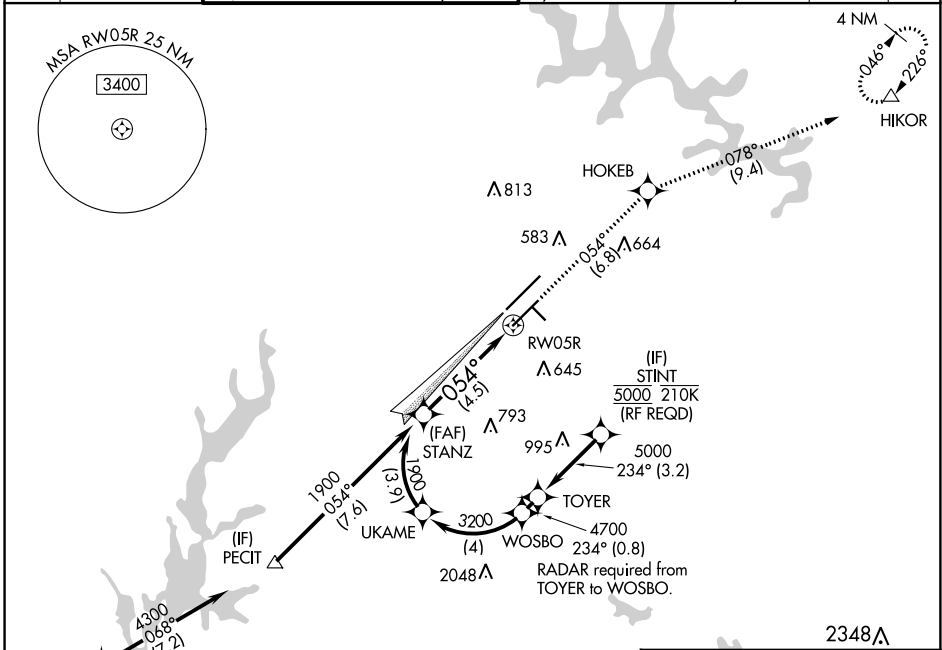
RNP AR APCH.

▼ For uncompensated Baro-VNAV systems, LNAV/VNAV NA below -9°C or above 54°C. Use of FD or AP providing RNAV track guidance required during simultaneous operations. For inop ALS, increase RNP 0.30 all Cats visibility to RVR 4500. Simultaneous approach authorized, except for arrivals at STINT.

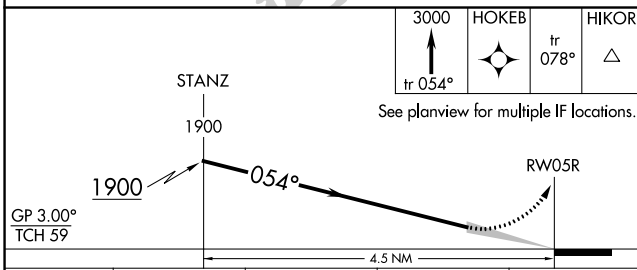


MISSED APPROACH: Climb to 3000 on track 054° to HOKEB and on track 078° to HIKOR and hold.

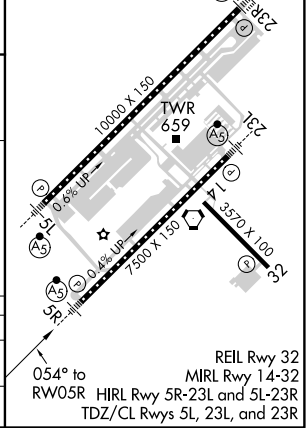
D-ATIS	RALEIGH APP CON	(EAST) RALEIGH TOWER (WEST)	(EAST) GND CON	(WEST)	CLNC DEL	CPDLC
123.8	128.3 307.9	127.45 257.8 Rwys 5R-23L and 14-32	119.3 257.8 Rwy 5L-23R	121.9 348.6 Rwys 5R-23L and 14-32	121.7 348.6 Rwy 5L-23R	120.1



(IAF) OTTOS 6000 230K	(IF) STANZ 1900	(IF) TOYER 4700	(IF) STINT 5000 210K (RF REQD)
--------------------------	--------------------	--------------------	-----------------------------------



ELEV 435	TDZE 420
----------	----------



CATEGORY	A	B	C	D
RNP 0.30 DA	817/35 397 (400-%)			

AUTHORIZATION REQUIRED

SE-2, 10 OCT 2019 to 07 NOV 2019

SE-2, 10 OCT 2019 to 07 NOV 2019