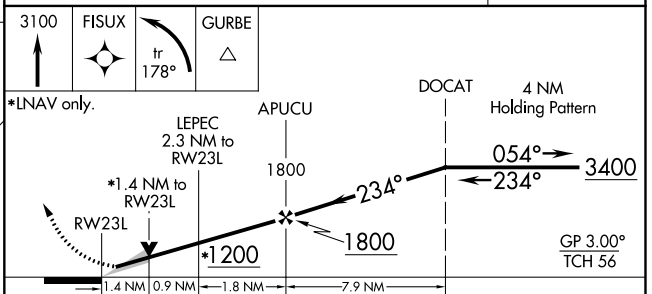
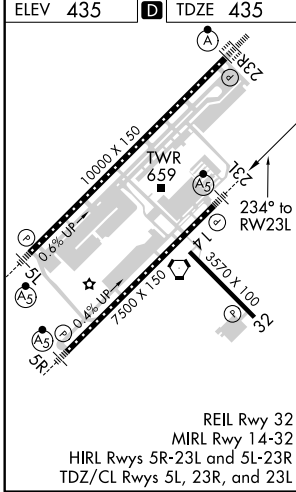
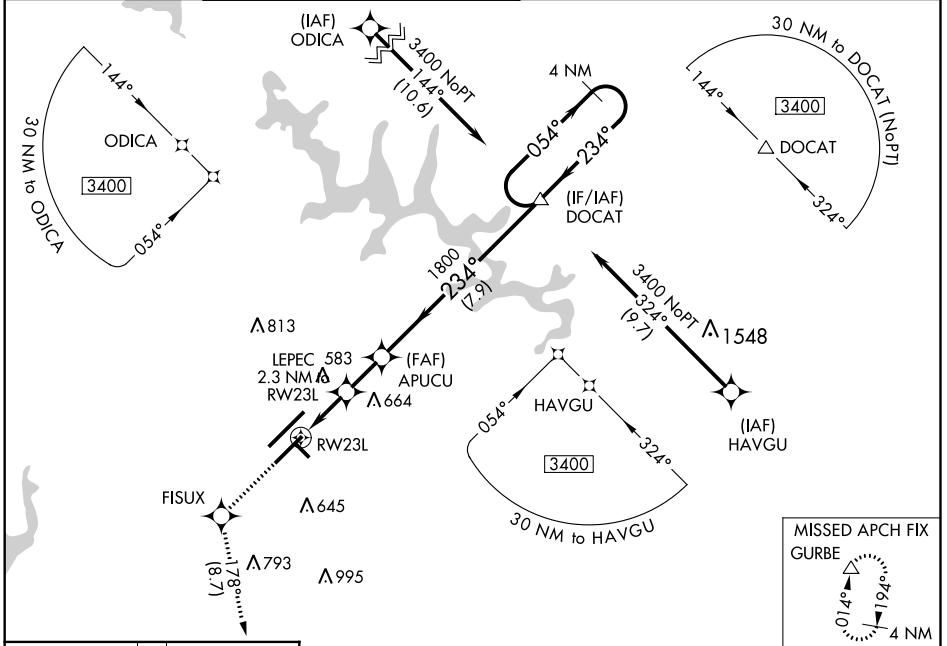


WAAS CH 65713 W23B	APP CRS 234°	Rwy Idg TDZE Apt Elev	7500 435 435
--	------------------------	-----------------------------	---

RNAV (GPS) Y RWY 23L

RALEIGH-DURHAM INTL (RDU)

RNP APCH.		MALSR		MISSED APPROACH: Climb to 3100 direct FISUX and left turn on track 178° to GURBE and hold.			
<p>▼ For uncompensated Baro-VNAV systems, LNAV/VNAV NA below -10°C (14°F) or above 54°C (130°F). Simultaneous approach authorized. LNAV procedure NA during simultaneous operations. Use of FD or AP required during simultaneous operations. For inop ALS, increase LNAV Cat C/D visibility to 1½ SM.</p>							
D-ATIS	RALEIGH APP CON	(EAST) RALEIGH TOWER	(WEST)	(EAST) GND CON	(WEST)	CLNC DEL	CPDLC
123.8	128.3 307.9	127.45 257.8 Rwys 5R-23L and 14-32	119.3 257.8 Rwy 5L-23R	121.9 348.6 Rwys 5R-23L and 14-32	121.7 348.6 Rwy 5L-23R	120.1	



CATEGORY	A	B	C	D
LPV DA		635/18	200 (200-½)	
LNAV/VNAV DA		820/35	385 (400-¾)	
LNAV MDA	920/24	485 (500-½)	920/50	485 (500-1)
CIRCLING	960-1	525 (600-1)	1040-1¾ 605 (700-1¾)	1180-2½ 745 (800-2½)

SE-2, 10 OCT 2019 to 07 NOV 2019

SE-2, 10 OCT 2019 to 07 NOV 2019