

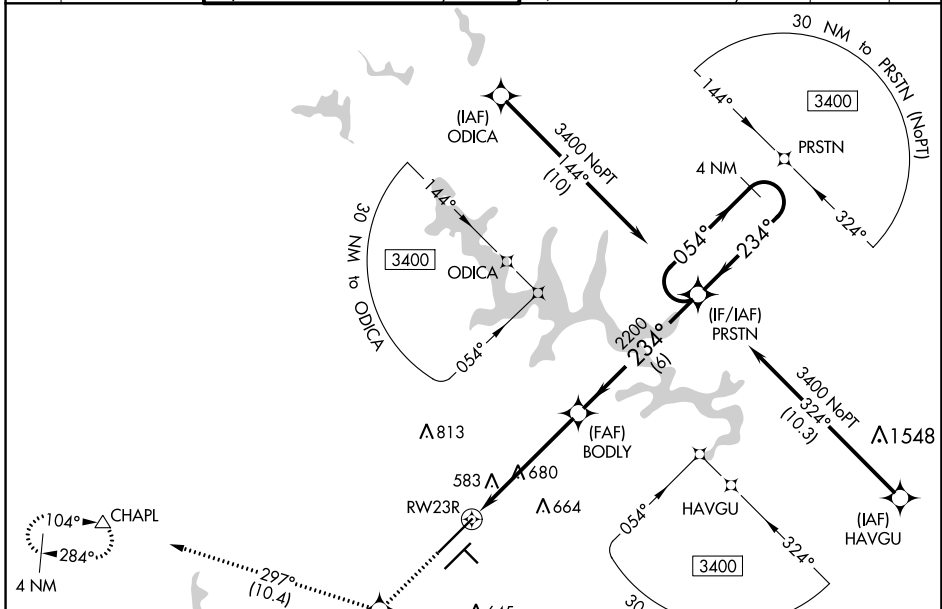
WAAS CH 45613 W23A	APP CRS 234°	Rwy Idg 10000 TDZE 409 Apt Elev 435
--	------------------------	--

RNAV (GPS) Y RWY 23R

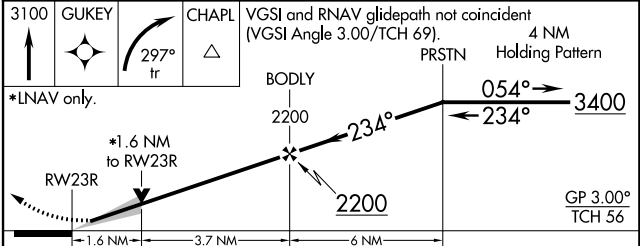
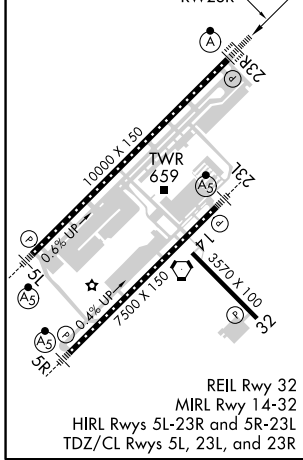
RALEIGH-DURHAM INTL (RDU)

RNP APCH.	<p>For uncompensated Baro-VNAV systems, LNAV/VNAV NA below -15°C (5°F) or above 48°C (118°F). Simultaneous approach authorized. LNAV procedure NA during simultaneous operations. Use of FD or AP providing RNAV track guidance required during simultaneous operations.</p>	ALSF-2	<p>MISSED APPROACH: Climb to 3100 direct GUKEY and right turn on 297° track to CHAPL and hold.</p>
<p>▼ ▲</p>			

D-ATIS	RALEIGH APP CON	(EAST) RALEIGH TOWER (WEST)	(EAST) GND CON	(WEST)	CLNC DEL	CPDLC
123.8	128.3 307.9	127.45 257.8 Rwys 5R-23L and 1-4-32	119.3 257.8 Rwy 5L-23R	121.9 348.6 Rwys 5R-23L and 1-4-32	121.7 348.6 Rwy 5L-23R	120.1



ELEV 435	D	TDZE 409
-----------------	----------	-----------------



CATEGORY	A	B	C	D
LPV DA		609/18	200 (200-½)	
LNAV/VNAV DA		927/60	518 (500-1¼)	
LNAV MDA	1000/24	591 (600-½)	1000/50 591 (600-1)	1000/60 591 (600-1¼)
C CIRCLING	1000-1	565 (600-1)	1040-1¾ 605 (700-1¾)	1180-2½ 745 (800-2½)

SE-2, 10 OCT 2019 to 07 NOV 2019

SE-2, 10 OCT 2019 to 07 NOV 2019