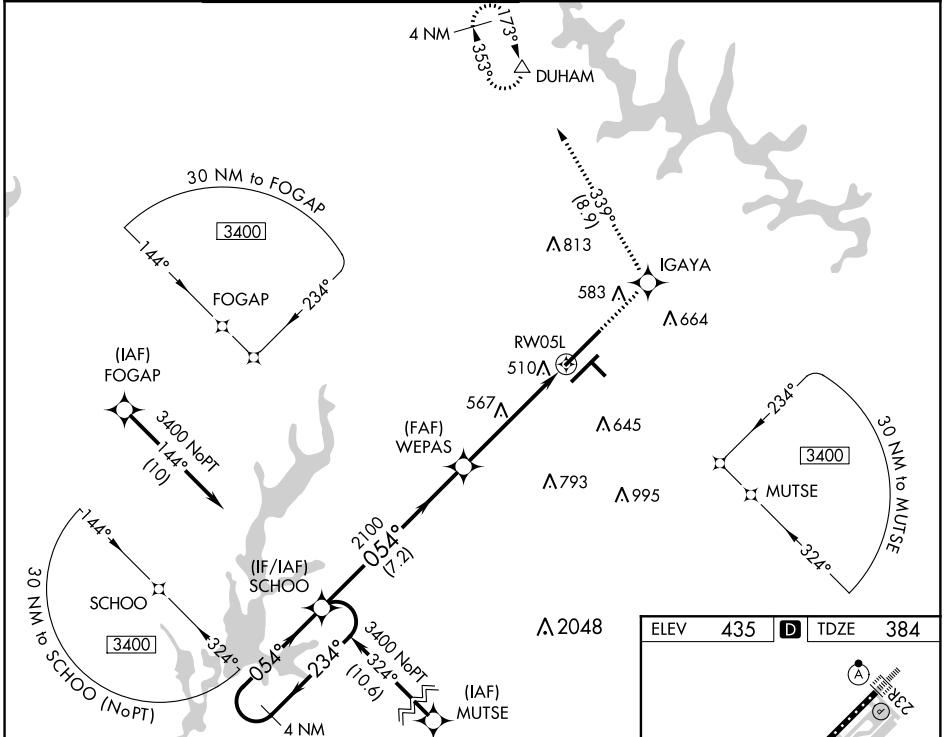


WAAS CH <b>48813</b> <b>W05A</b>	APP CRS <b>054°</b>	Rwy Idg <b>10000</b> TDZE <b>384</b> Apt Elev <b>435</b>
--	------------------------	--

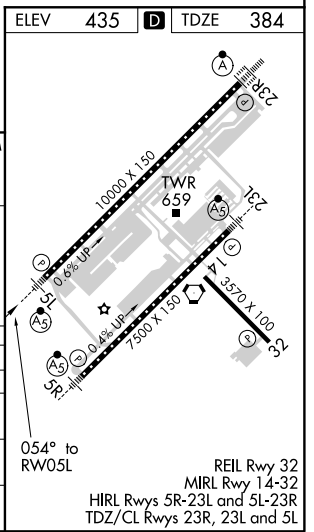
# RNAV (GPS) Y RWY 5L

RALEIGH-DURHAM INTL (RDU)

RNP APCH.		MALSR		MISSED APPROACH: Climb to 2200 direct IGAYA and on track 339° to DUHAM and hold.			
<p>⚠ For uncompensated Baro-VNAV systems, LNAV/VNAV NA below -1.5°C (5°F) or above 48°C (118°F). Simultaneous approach authorized. LNAV procedure NA during simultaneous operations. Use of FD or AP providing RNAV track guidance required during simultaneous operations.</p>							
D-ATIS	RALEIGH APP CON	(EAST) RALEIGH TOWER	(WEST)	(EAST) GND CON	(WEST)	CLNC DEL	CPDLC
<b>123.8</b>	<b>128.3 307.9</b>	<b>127.45 257.8</b>	<b>119.3 257.8</b>	<b>121.9 348.6</b>	<b>121.7 348.6</b>	<b>120.1</b>	
		Rwys 5R-23L and 14-32	Rwy 5L-23R	Rwys 5R-23L and 14-32	Rwy 5L-23R		



4 NM Holding Pattern		2200 IGAYA		DUHAM	
3400 ← 234°		↑		tr 339°	
GP 3.00°		*1.4 NM to RW05L		*LNAV only.	
TCH 57		2100		RW05L	
VGSi and RNAV glidepath not coincident (VGSi Angle 3.00/TCH 72).		7.2 NM		3.8 NM	
		1.4 NM			
CATEGORY	A	B	C	D	
LPV DA	595/24		211 (200-½)		
LNAV/VNAV DA	792/50		408 (400-1)		
LNAV MDA	880/24	496 (500-½)	880/40	880/50	
			496 (500-¾)	496 (500-1)	
CIRCLING	960-1	525 (600-1)	1040-1¾	1180-2½	
			605 (700-1¾)	745 (800-2½)	



SE-2, 10 OCT 2019 to 07 NOV 2019

SE-2, 10 OCT 2019 to 07 NOV 2019

REIL Rwy 32  
MIRL Rwy 14-32  
HIRL Rwys 5R-23L and 5L-23R  
TDZ/CL Rwys 23R, 23L and 5L