

WAAS CH <b>40341</b> <b>W13A</b>	APP CRS <b>128°</b>	Rwy Idg TDZE Apt Elev	<b>6901</b> <b>1302</b> <b>1302</b>
--	------------------------	-----------------------------	---

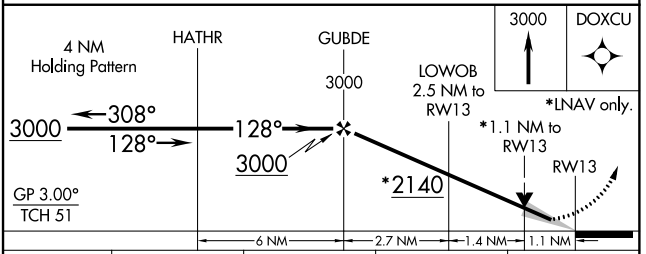
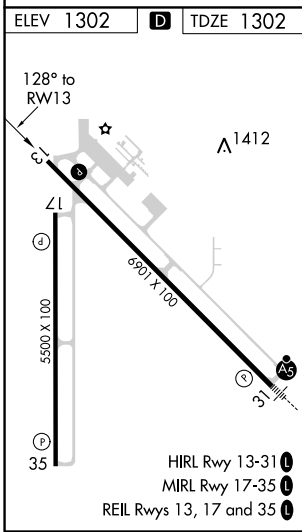
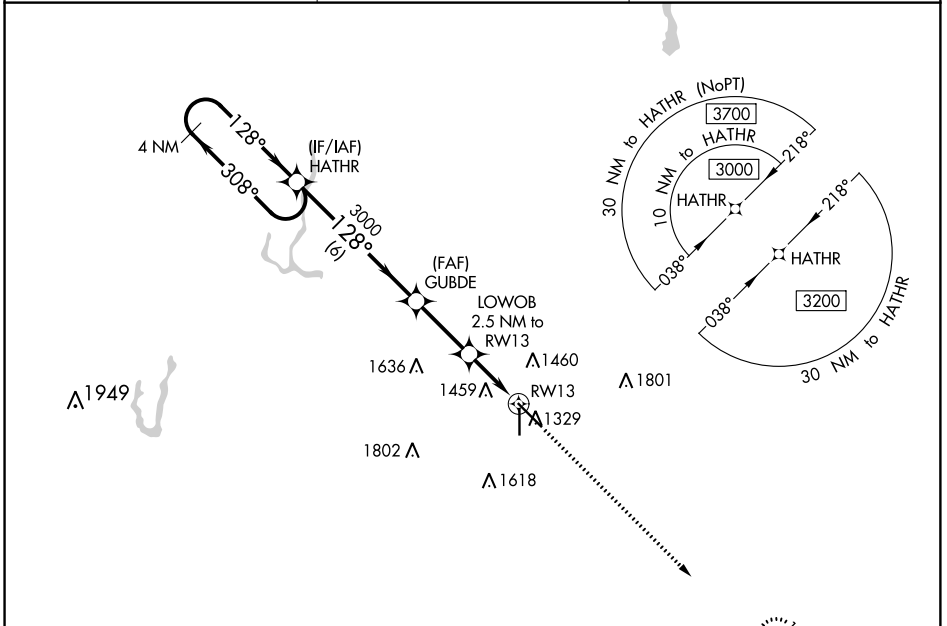
# RNAV (GPS) RWY 13

ABERDEEN RGNL (ABR)

**⚠** For uncompensated Baro-VNAV systems, LNAV/VNAV NA below -21°C (-5°F) or above 54°C (130°F).  
DME/DME RNP-0.3 NA.

MISSED APPROACH: Climb to 3000 direct DOXCU and hold.

ASOS <b>125.875</b>	MINNEAPOLIS CENTER <b>120.6 371.9</b>	UNICOM <b>122.7 (CTAF) 0</b>
------------------------	--	---------------------------------



CATEGORY	A	B	C	D
LPV DA	1502- <sup>3</sup> / <sub>4</sub> 200 (200- <sup>3</sup> / <sub>4</sub> )			
LNAV/VNAV DA	1752-1 <sup>3</sup> / <sub>8</sub> 450 (500-1 <sup>3</sup> / <sub>8</sub> )			
LNAV MDA	1700-1	398 (400-1)	1700-1 <sup>1</sup> / <sub>8</sub>	398 (400-1 <sup>1</sup> / <sub>8</sub> )
<b>C</b> CIRCLING	1760-1 458 (500-1)	1860-1 558 (600-1)	1960-1 <sup>3</sup> / <sub>4</sub> 658 (700-1 <sup>3</sup> / <sub>4</sub> )	2160-2 <sup>3</sup> / <sub>4</sub> 858 (900-2 <sup>3</sup> / <sub>4</sub> )

NC-1, 10 OCT 2019 to 07 NOV 2019

NC-1, 10 OCT 2019 to 07 NOV 2019