

WAAS CH <b>65800</b> <b>W35A</b>	APP CRS <b>353°</b>	Rwy ldg TDZE Apt Elev	<b>5500</b> <b>1300</b> <b>1302</b>
--	------------------------	-----------------------------	---

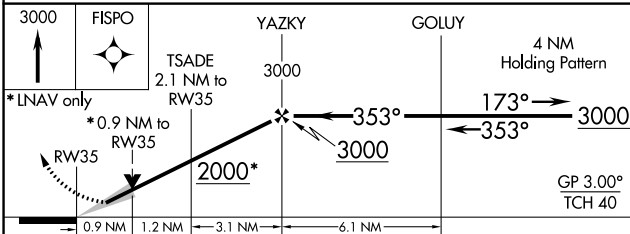
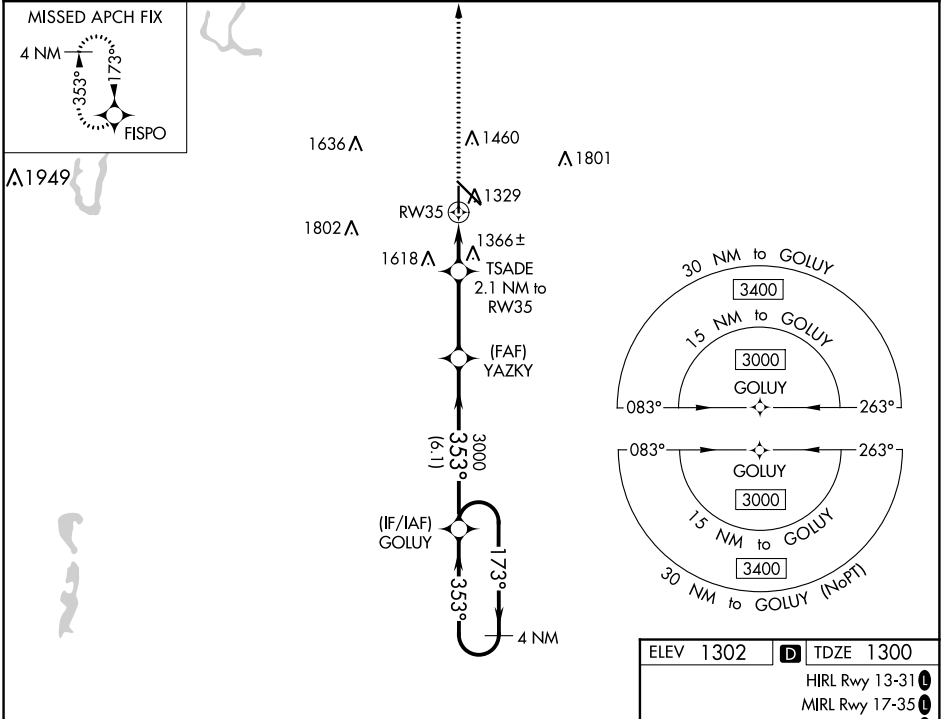
# RNAV (GPS) RWY 35

ABERDEEN RGNL (ABR)

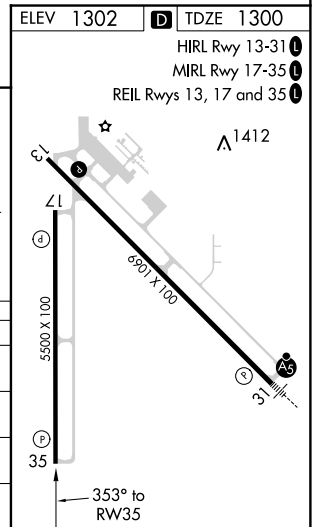
**⚠** For uncompensated Baro-VNAV systems, LNAV/VNAV NA below -22°C (-7°F) or above 54°C (130°F).  
**⚠** DME/DME RNP-0.3 NA.

MISSED APPROACH: Climb to 3000 direct FISPO and hold.

ASOS <b>125.875</b>	MINNEAPOLIS CENTER <b>120.6 371.9</b>	UNICOM <b>122.7 (CTAF)</b>
------------------------	--	-------------------------------



CATEGORY	A	B	C	D
LPV DA		1500-3/4	200 (200-3/4)	
LNAV/VNAV DA		1550-7/8	250 (300-7/8)	
LNAV MDA	1620-1	320 (400-1)	1620-7/8	320 (400-7/8)
<b>C</b> CIRCLING	1760-1 458 (500-1)	1860-1 558 (600-1)	1960-1 3/4 658 (700-1 3/4)	2160-2 3/4 858 (900-2 3/4)



NC-1, 10 OCT 2019 to 07 NOV 2019

NC-1, 10 OCT 2019 to 07 NOV 2019