

LOC I-FTY <b>109.1</b>	APP CRS <b>085°</b>	Rwy Idg TDZE Apt Elev	<b>5797</b> <b>808</b> <b>841</b>
---------------------------	------------------------	-----------------------------	---

# ILS or LOC RWY 8

FULTON COUNTY AIRPORT-BROWN FIELD (F'TY)

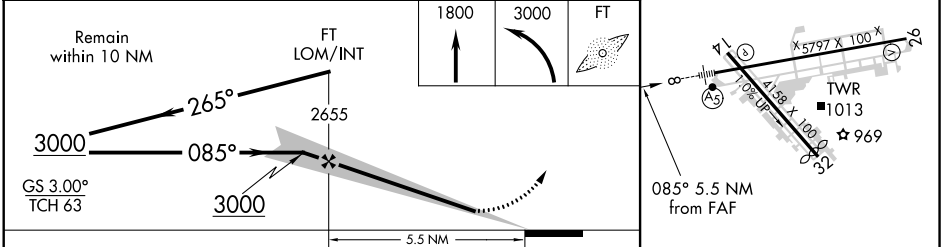
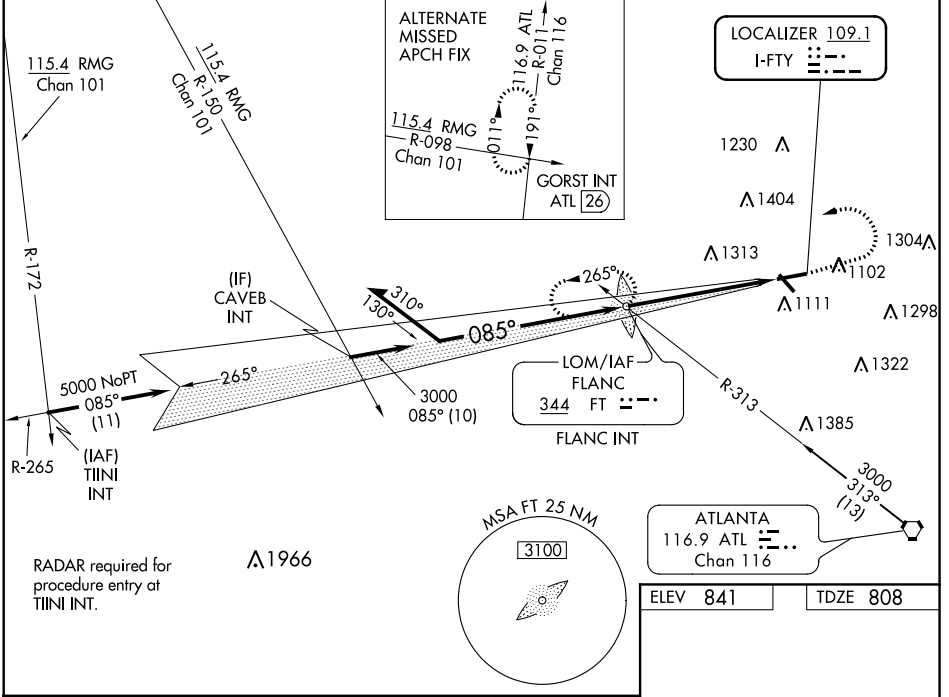
ADF required.

**⚠** Circling Rwy 14, 32 NA at night. For inoperative ALS, increase S-LOC 8 Cat A visibility to 1 SM and Cat C/D visibility to 2½ SM. Rwy 8 helicopter visibility reduction below ¾ SM NA. Ridge with trees to 1299' MSL between outer marker and runway threshold may be obscured by clouds even with airfield ceiling at or above procedure minimums.

MALSR

MISSED APPROACH: Climb to 1800 then climbing left turn to 3000 direct FLANC LOM/Int and hold.

ATIS <b>120.175</b>	ATLANTA APP CON <b>121.0 268.7</b>	FULTON COUNTY TOWER <b>118.45 257.8</b>	GND CON <b>121.7 348.6</b>
------------------------	---------------------------------------	--	-------------------------------



CATEGORY	A	B	C	D
S-ILS 8	1064-¾ 256 (300-¾)			
S-LOC 8	1640-¾	832 (800-¾)	1640-1⅞	832 (800-1⅞)
<b>C</b> CIRCLING	1640-1	799 (800-1)	1740-2¾ 899 (900-2¾)	1740-3 899 (900-3)

HIRL Rwy 8-26  
MIRL Rwy 14-32  
REIL Rws 14, 26 and 32  
FAF to MAP 5.5 NM

Knots	60	90	120	150	180
Min:Sec	5:30	3:40	2:45	2:12	1:50

SE-4, 10 OCT 2019 to 07 NOV 2019

SE-4, 10 OCT 2019 to 07 NOV 2019