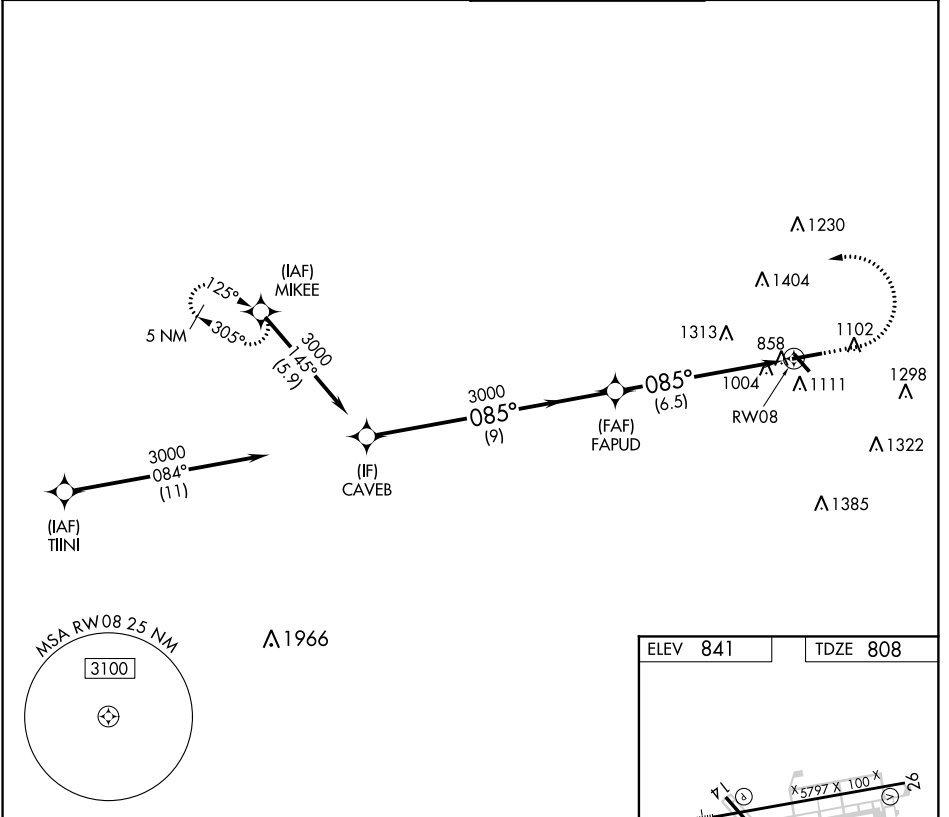


APP CRS	Rwy Idg	5797
085°	TDZE	808
	Apt Elev	841

RNAV (RNP) Z RWY 8

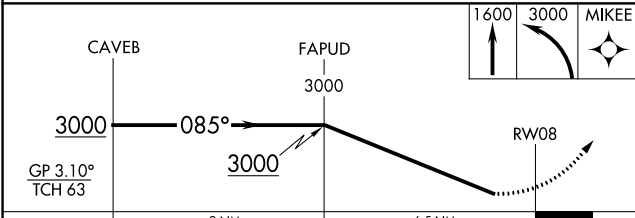
FULTON COUNTY AIRPORT-BROWN FIELD (F'TY)

For uncompensated Baro-VNAV systems, procedure NA below -8°C (18°F) or above 44°C (111°F). GPS required. For inop ALS, increase all Cats visibility to 1 1/4 SM.	MALSR 	MISSED APPROACH: Climb to 1600 then climbing left turn to 3000 direct MIKEE and hold. (Do not exceed 210K until 1600).	
			ATIS 120.175



SE-4, 10 OCT 2019 to 07 NOV 2019

SE-4, 10 OCT 2019 to 07 NOV 2019



ELEV 841	TDZE 808
----------	----------

The aerial view shows RWY 8 with the RNP Z RWY 8 path overlaid. Key points include MIKEE, FAPUD, and RW08. A tower (TWR) at 1013 ft and a star 969 are also visible. The path is shown with headings and distances: 085° to RW08, 108° to MIKEE, and 100° to FAPUD. Other altitudes shown include 5797, 100, and 20.

HIRL Rwy 8-26
MIRL Rwy 14-32
REIL Rwys 14, 26 and 32

CATEGORY	A	B	C	D
RNP 0.30 DA		1363-1 3/8	555 (600-1 3/8)	

AUTHORIZATION REQUIRED