

ATLANTA, GEORGIA

AL-745 (FAA)

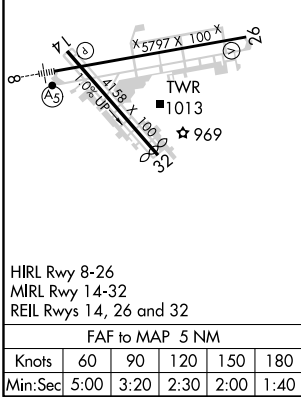
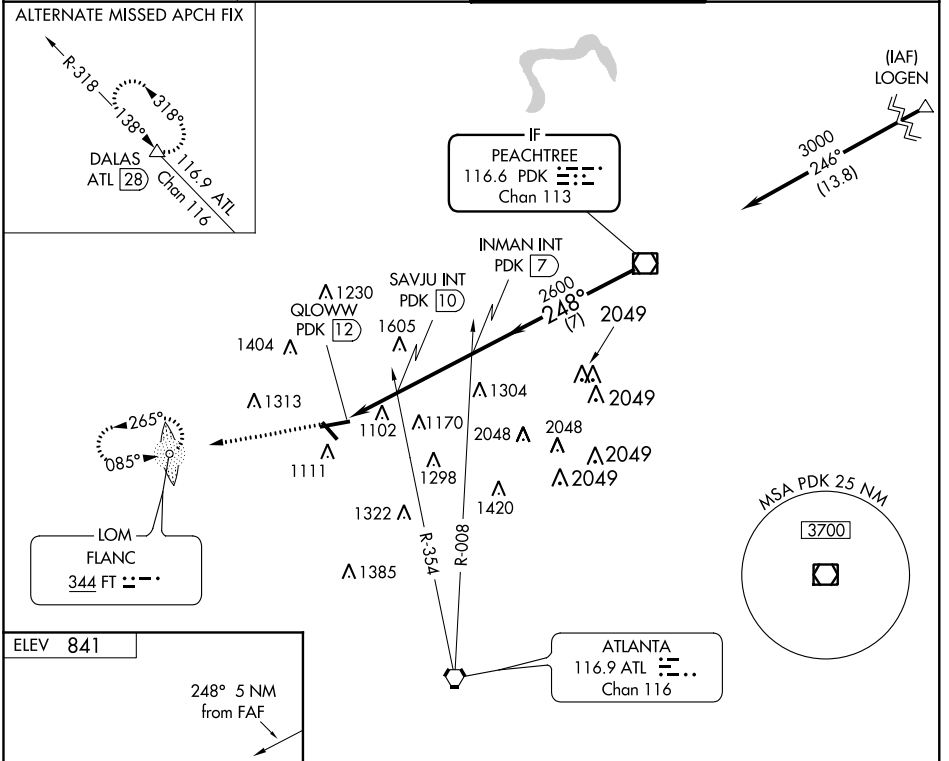
18312

VOR/DME PDK <b>116.6</b> Chan <b>113</b>	APP CRS <b>248°</b>	Rwy Idg TDZE Apt Elev	<b>N/A</b> <b>N/A</b> <b>841</b>
--	------------------------	-----------------------------	--

**VOR-A**

FULTON COUNTY AIRPORT-BROWN FIELD (F<sup>T</sup>Y)

ADF or RADAR required.		MISSED APPROACH: Climb to 3000 direct FLANC LOM and hold.	
<p>▼ Circling Rwy 14, 32 NA at night. ▲ Helicopter visibility reduction below 1 SM NA.</p>			
ATIS <b>120.175</b>	ATLANTA APP CON <b>121.0 268.7</b>	FULTON COUNTY TOWER <b>118.45 257.8</b>	GND CON <b>121.7 348.6</b>



Atlanta, Georgia  
Amdt 1C 08NOV18

ELEV 841	248° 5 NM from FAF	3000 FT	INMAN INT PDK 7	PDK VOR/DME 3000
			2600	
			1880	
			2 NM	3 NM
			7 NM	
CATEGORY	A	B	C	D
<b>C</b> CIRCLING	1880-1¼ 1039 (1100-1¼)	1880-1½ 1039 (1100-1½)	1880-3	1039 (1100-3)
SAVJU FIX MINIMUMS (DUAL VOR RECEIVERS OR DME REQUIRED)				
<b>C</b> CIRCLING	1480-1 639 (700-1)	1520-1 679 (700-1)	1740-2¾ 899 (900-2¾)	1740-3 899 (900-3)

ATLANTA, GEORGIA  
Amdt 1C 08NOV18

FULTON COUNTY AIRPORT-BROWN FIELD (F<sup>T</sup>Y)  
33°47'N-84°31'W

**VOR-A**

SE-4, 10 OCT 2019 to 07 NOV 2019

SE-4, 10 OCT 2019 to 07 NOV 2019