

VORTAC MKK 116.1 Chan 108	APP CRS 066°	Rwy Idg TDZE Apt Elev 454	N/A N/A 454
---	------------------------	-------------------------------------	--------------------------

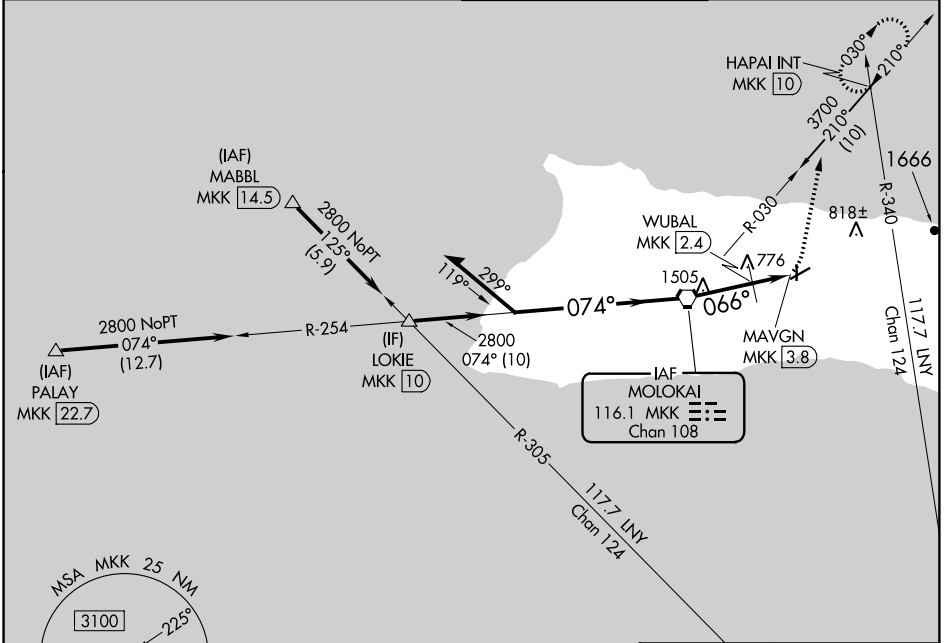
VOR or TACAN-A

MOLOKAI (MKK) (PHMK)

⚠ Circling Rwy 17, 23 NA at night.

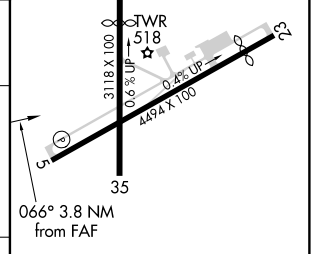
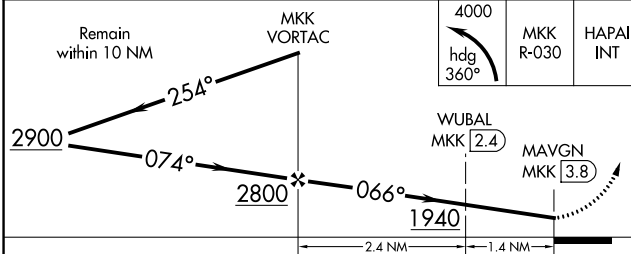
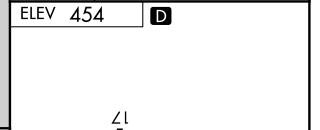
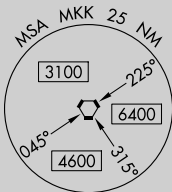
MISSED APPROACH: Climbing left turn to 4000 on heading 360° and on MKK VORTAC R-030 to HAPAI INT/MKK 10 DME and hold, continue climb-in-hold to 4000.

ATIS 128.2	HCF CENTER 124.1 317.5	MOLOKAI TOWER★ 125.7 (CTAF) 0 306.2	GND CON 121.9
----------------------	----------------------------------	---	-------------------------



PAC, 10 OCT 2019 to 05 DEC 2019

PAC, 10 OCT 2019 to 05 DEC 2019



CATEGORY	A	B	C	D
C CIRCLING	1940-¼ 1486 (1500-¼)	1940-½ 1486 (1500-½)	1940-3	1486 (1500-3)
WUBAL FIX MINIMUMS (DME REQUIRED)				
C CIRCLING	1400-¼ 946 (1000-¼)		1680-3 1226 (1300-3)	1940-3 1486 (1500-3)

REIL Rwy 5 **Ⓛ**
MIRL Rwys 5-23 and 17-35 **Ⓛ**

FAF to MAP 3.8 NM

Knots	60	90	120	150	180
Min:Sec	3:48	2:32	1:54	1:31	1:16