

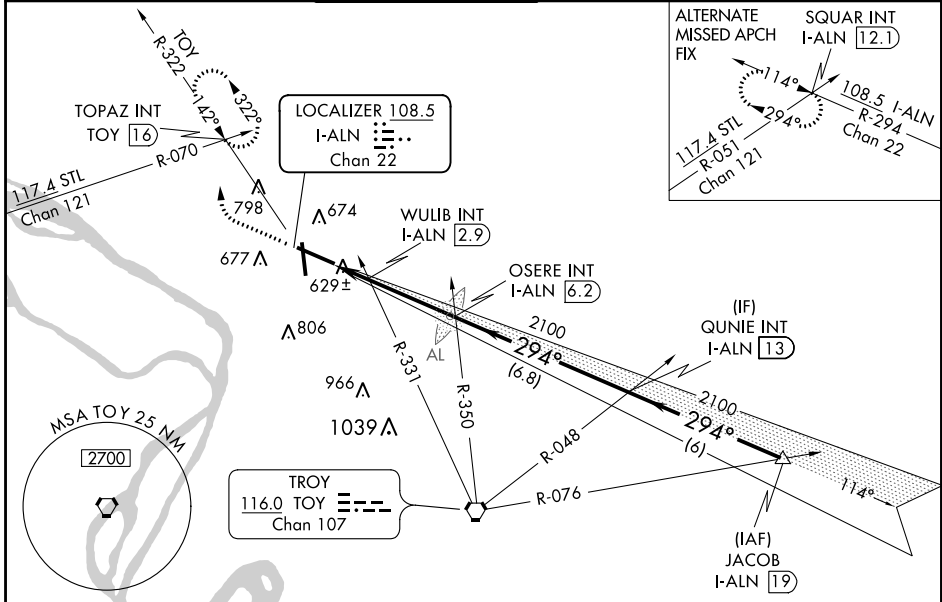
LOC/DME I-ALN 108.5 Chan 22	APP CRS 294°	Rwy Idg TDZE Apt Elev	8099 531 544
--	------------------------	-----------------------------	---

ILS or LOC RWY 29

ST LOUIS RGNL (ALN)

<p>For inop ALS, increase WULIB fix minimums S-LOC 29 Cats C/D visibility to 1 SM.</p>	<p>MALSR</p>	<p>MISSED APPROACH: Climb to 1000 then climbing right turn to 2200 on heading 310° and on TOY VORTAC R-322 to TOPAZ INT/TOY 16 DME and hold.</p>
		<p>ATIS 128.0</p>

ST LOUIS APP CON 124.2 353.9	REGIONAL TOWER* 126.0 (CTAF) 0 239.0	GND CON 120.2	CLNC DEL 120.2 (when tower closed)	UNICOM 122.95
--	--	-------------------------	---	-------------------------



ELEV 544	D	TDZE 531
----------	----------	----------

REIL Rwy 11
HIRL Rwy 11-29
MIRL Rwy 17-35

FAF to MAP 4.8 NM

Knots	60	90	120	150	180
Min:Sec	4:48	3:12	2:24	1:55	1:36

		TOY R-322	TOPAZ INT	*LOC only.		
		OSERE INT I-ALN 6.2	QUNIE INT I-ALN 13	JACOB I-ALN 19		
		WULIB INT I-ALN 2.9	2100	2100	2100	GS 3.00° TCH 55
		I-ALN 1.5	* 980	2100	2100	
		1.4 NM	3.4 NM	6.8 NM	6 NM	
		294°	294°	294°	294°	
		2100	2100	2100	2100	
		1000	2200			
		hdg 310°				

CATEGORY	A	B	C	D
S-ILS 29	731-1/2 200 (200-1/2)			
S-LOC 29	980-1/2 449 (500-1/2)	980-7/8 449 (500-7/8)		
CIRCLING	1000-1 456 (500-1)	1000-1 1/2 456 (500-1 1/2)	1100-2 556 (600-2)	
WULIB FIX MINIMUMS (DUAL VOR RECEIVERS OR DME REQUIRED)				
S-LOC 29	880-1/2 349 (400-1/2)	880-5/8 349 (400-5/8)		
CIRCLING	1000-1 456 (500-1)	1000-1 1/2 456 (500-1 1/2)	1100-2 556 (600-2)	

EC-3, 10 OCT 2019 to 07 NOV 2019

EC-3, 10 OCT 2019 to 07 NOV 2019