

LOC/DME I-ALN <b>108.5</b> Chan <b>22</b>	APP CRS <b>114°</b>	Rwy Idg <b>8099</b> TDZE <b>539</b> Apt Elev <b>545</b>
---	------------------------	--

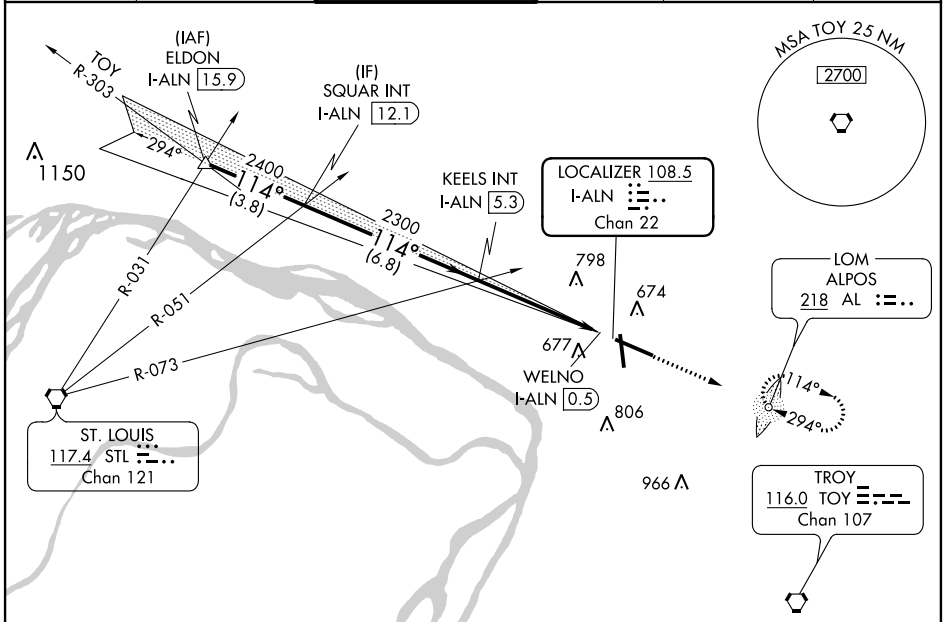
# LOC BC RWY 11

ST LOUIS RGNL (ALN)

**⚠** Visibility reduction by helicopters NA. ADF required. When local altimeter setting not received, use St Louis Lambert Intl altimeter setting, and increase all MDA 60 feet, and increase LNAV Cat C and D and Circling Cat C visibility ¼ mile. VDP NA with St Louis Lambert Intl altimeter setting. When VGSB inoperative, Circling Rwy 17/35 NA at night.

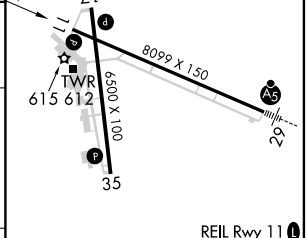
MISSED APPROACH: Climb to 2100 direct AL LOM and hold.

ATIS <b>128.0</b>	ST LOUIS APP CON <b>124.2 353.9</b>	REGIONAL TOWER* <b>126.0(CTAF) 0 239.0</b>	GND CON <b>120.2</b>	CLNC DEL <b>120.2</b> (when tower closed)	UNICOM <b>122.95</b>
----------------------	--	---	-------------------------	---	-------------------------



## BACK COURSE

ELDON I-ALN 15.9	SQUAR INT I-ALN 12.1	KEELS INT I-ALN 5.3	WELNO I-ALN 0.5	2100	AL
2400	2400	2300	545		
3.8 NM	6.8 NM	3.9 NM	0.8	0.7	



CATEGORY	A	B	C	D
S-11	1060-1 521 (600-1)		1060-1½ 521 (600-1½)	
CIRCLING	1060-1 515 (600-1)		1060-1½ 515 (600-1½)	1100-2 555 (600-2)

FAF to MAP 4.7 NM					
Knots	60	90	120	150	180
Min:Sec	4:42	3:08	2:21	1:53	1:34

EC-3, 10 OCT 2019 to 07 NOV 2019

EC-3, 10 OCT 2019 to 07 NOV 2019