

WAAS CH 77507 W29A	APP CRS 294°	Rwy Idg TDZE Apt Elev	8099 531 544
--	------------------------	-----------------------------	---

RNAV (GPS) RWY 29

ST LOUIS RGNL (ALN)

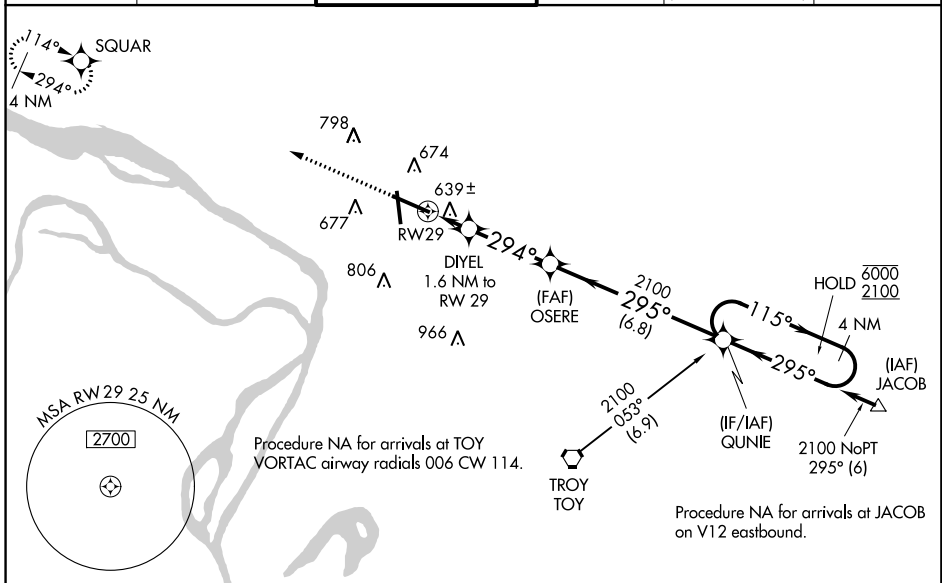
RNP APCH.

▼ For uncompensated Baro-VNAV systems, LNAV/VNAV NA below -16°C or above 54°C. For inop ALS, increase LNAV/VNAV all Cats visibility to 3/8 SM and LNAV Cat C/D visibility to 1 SM.

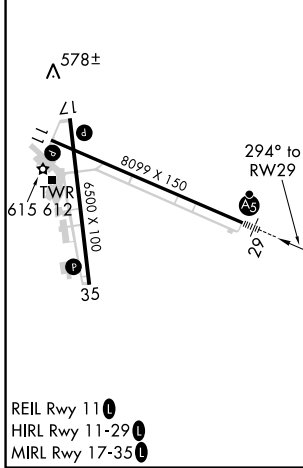


MISSED APPROACH:
Climb to 2400 direct
SQUAR and hold.

ATIS 128.0	ST LOUIS APP CON 124.2 353.9	REGIONAL TOWER* 126.0 (CTAF) 0 239.0	GND CON 120.2	CLNC DEL 120.2 (when tower closed)	UNICOM 122.95
----------------------	--	--	-------------------------	---	-------------------------



ELEV 544	D	TDZE 531
----------	----------	----------



▲1068				
2400 SQUAR				
DIYEL OSERE GUNIE 4 NM Holding Pattern				
*LNAV only.				
*1 NM to RWY 29				
RWY 29				
*1080				
1 NM 0.6 NM 3.2 NM 6.8 NM				
CATEGORY	A	B	C	D
LPV DA		731-1/2	200 (200-1/2)	
LNAV/VNAV DA		825-1/2	294 (300-1/2)	
LNAV MDA	900-1/2	369 (400-1/2)	900-3/4	369 (400-3/4)
CIRCLING	1000-1	456 (500-1)	1000-1 1/2	1100-2
			456 (500-1 1/2)	556 (600-2)

EC-3, 10 OCT 2019 to 07 NOV 2019

EC-3, 10 OCT 2019 to 07 NOV 2019