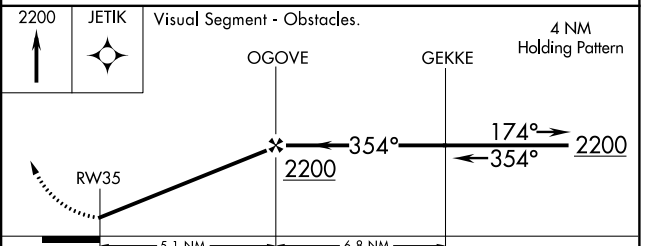
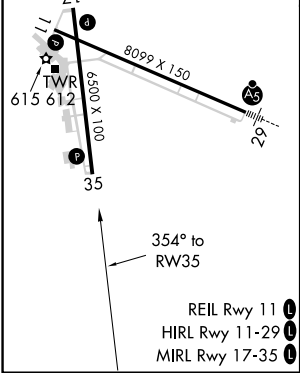
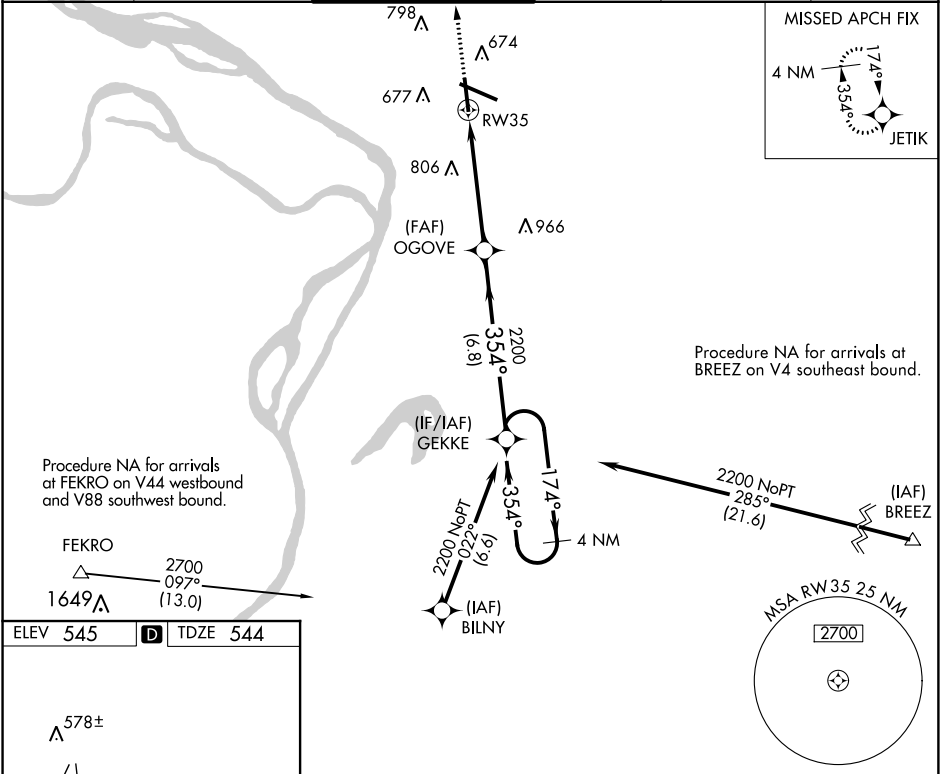


| | | |
|-------------|----------|-------------|
| APP CRS | Rwy Idg | 6500 |
| 354° | TDZE | 544 |
| | Apt Elev | 545 |

RNAV (GPS) RWY 35

ST LOUIS RGNL (ALN)

| | | | | | |
|--|--------------------|----------------------------|---|-------------------------------------|---------------|
| RNP APCH. | | | MISSED APPROACH: Climb to 2200 direct JETIK and hold. | | |
| <p>▼ Visibility reduction by helicopters NA. When local altimeter setting not received, use St Louis Lambert Intl altimeter setting and increase all MDA 60 feet and increase LNAV Cat C and D visibility 1/8 mile. When VGSi inop, Straight-in/Circling Rwy 35 procedure and Circling Rwy 17 NA at night.</p> | | | | | |
| ATIS | ST LOUIS APP CON | REGIONAL TOWER* | GND CON | CLNC DEL | UNICOM |
| 128.0 | 124.2 353.9 | 126.0(CTAF) 0 239.0 | 120.2 | 120.2 (when tower closed) | 122.95 |



| CATEGORY | A | B | C | D |
|----------|--------|-------------|-----------------|-----------------|
| LNAV MDA | 1020-1 | 476 (500-1) | 1020-1 3/8 | 476 (500-1 3/8) |
| CIRCLING | 1020-1 | 475 (500-1) | 1020-1 1/2 | 1100-2 |
| | | | 475 (500-1 1/2) | 555 (600-2) |

EC-3, 10 OCT 2019 to 07 NOV 2019

EC-3, 10 OCT 2019 to 07 NOV 2019