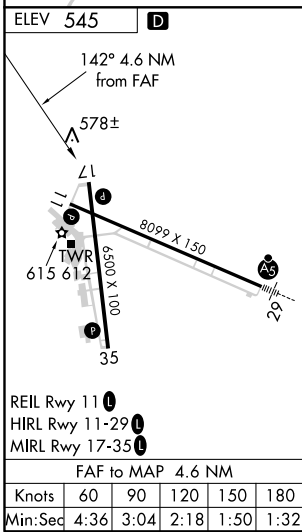
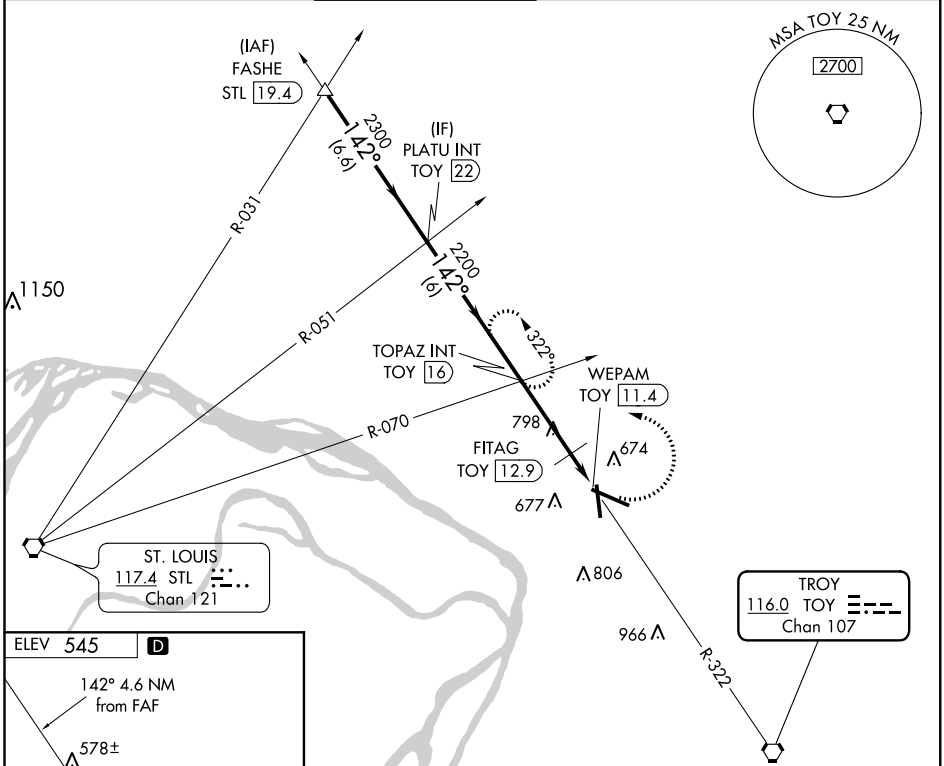


VORTAC TOY 116.0 Chan 107	APP CRS 142°	Rwy Idg TDZE Apt Elev 545	N/A N/A 545
---	------------------------	---	--

VOR-A
ST LOUIS RGNL (A.I.N)

<p>⚠ When local altimeter setting not received, use St Louis Lambert Intl altimeter setting and increase all MDA 60 feet. When VGSI inop, Circling to Rwy 17/35 NA at night.</p>		<p>MISSED APPROACH: Climbing left turn to 2200 via TOY R-322 to TOPAZ INT/TOY 16 DME and hold.</p>			
ATIS 128.0	ST LOUIS APP CON 124.2 353.9	REGIONAL TOWER* 126.0 (CTAF) 0 239.0	GND CON 120.2	CLNC DEL 120.2 (when tower closed)	UNICOM 122.95



	FASHE STL 19.4 2700	*1160 when using St Louis Lambert Intl altimeter setting. PLATU INT TOY 22 2300	TOPAZ INT TOY 16 FITAG TOY 12.9 2200	WEPAM TOY 11.4 2200	TOY R-322 2200	TOPAZ INT
Procedure Turn	NA					
	6.6 NM		6 NM	3.2 NM	1.4 NM	
CATEGORY	A	B	C	D		
CIRCLING	1100-1	555 (600-1)	1100-1½ 555 (600-1½)	1100-2 555 (600-2)		
	FITAG FIX MINIMUMS					
CIRCLING	980-1 435 (500-1)	1000-1 455 (500-1)	1000-1½ 455 (500-1½)	1100-2 555 (600-2)		

EC-3, 10 OCT 2019 to 07 NOV 2019

EC-3, 10 OCT 2019 to 07 NOV 2019