

WAAS CH <b>82237</b> <b>W18A</b>	APP CRS <b>176°</b>	Rwy Idg TDZE Apt Elev	<b>5001</b> <b>1477</b> <b>1477</b>
--	------------------------	-----------------------------	---

# RNAV (GPS) RWY 18

ALVA RGNL (AVK)

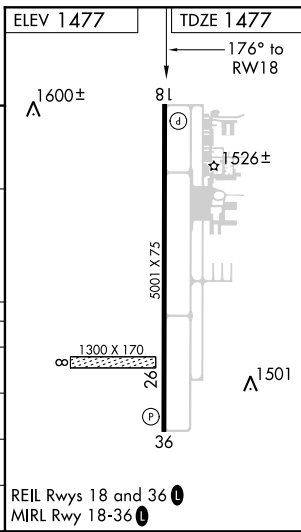
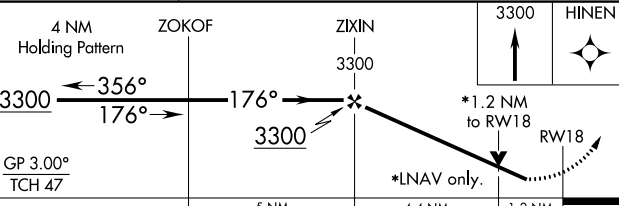
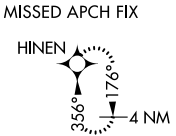
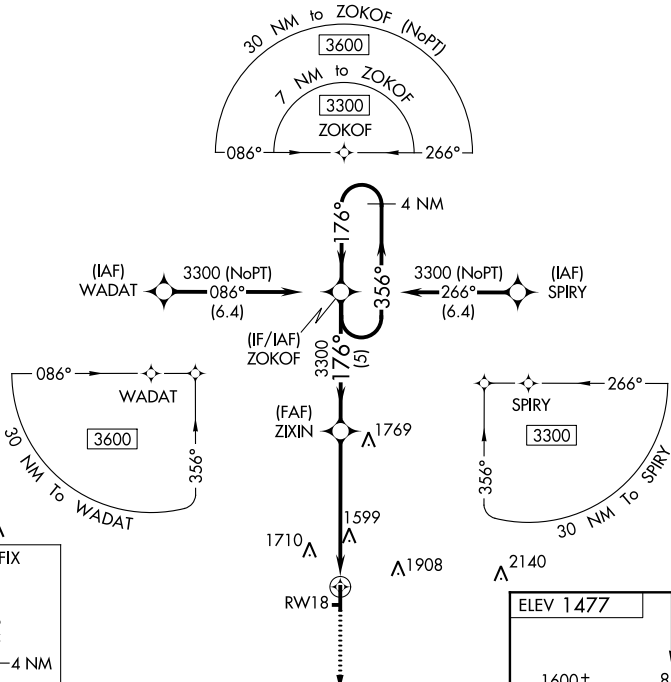
**⚠** For uncompensated Baro-VNAV systems, LNAV/VNAV NA below -17°C (2°F) or above 54°C (130°F). DME/DME RNP-0.3 NA. When local altimeter setting not received, use Vance AFB altimeter setting and increase all DA 127 feet and all MDA 140 feet; increase LPV all Cats and LNAV Cat C visibility 3/8 mile, LNAV/VNAV all Cats and Circling Cat C visibility 1/2 mile. Baro-VNAV and VDP NA when using Vance AFB altimeter setting. Helicopter visibility reduction below 3/4 SM NA.

**MISSED APPROACH:**  
Climb to 3300 direct HINEN and hold.

AWOS-3  
**121.125**

VANCE APP CON \*  
**126.75 346.325**

UNICOM  
**122.8 (CTAF) 0**



CATEGORY	A	B	C	D
LPV DA	1738-7/8 261 (300-7/8)			NA
LNAV/VNAV DA	1748-7/8 271 (300-7/8)			NA
LNAV MDA	1900-1	423 (500-1)	1900-1 1/4 423 (500-1 1/4)	NA
<b>C</b> CIRCLING	1980-1 503 (600-1)	2120-1 643 (700-1)	2220-2 1/4 743 (800-2 1/4)	NA

REIL Rwy 18 and 36 0  
 MIRL Rwy 18-36 0

SC-1, 10 OCT 2019 to 07 NOV 2019

SC-1, 10 OCT 2019 to 07 NOV 2019