

APP CRS	Rwy Idg	<b>3013</b>
<b>092°</b>	TDZE	<b>197</b>
	Apt Elev	<b>197</b>

# RNAV (GPS) RWY 9

WETUMPKA MUNI (08A)

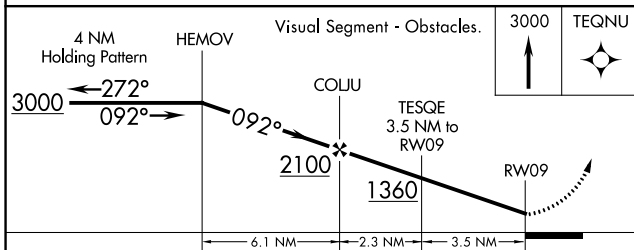
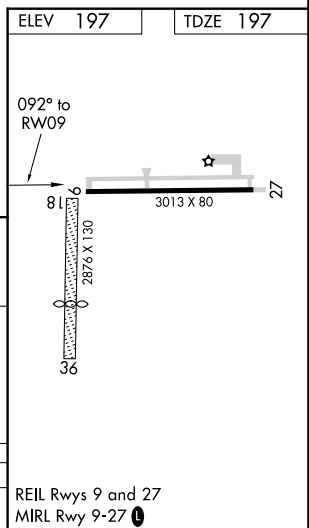
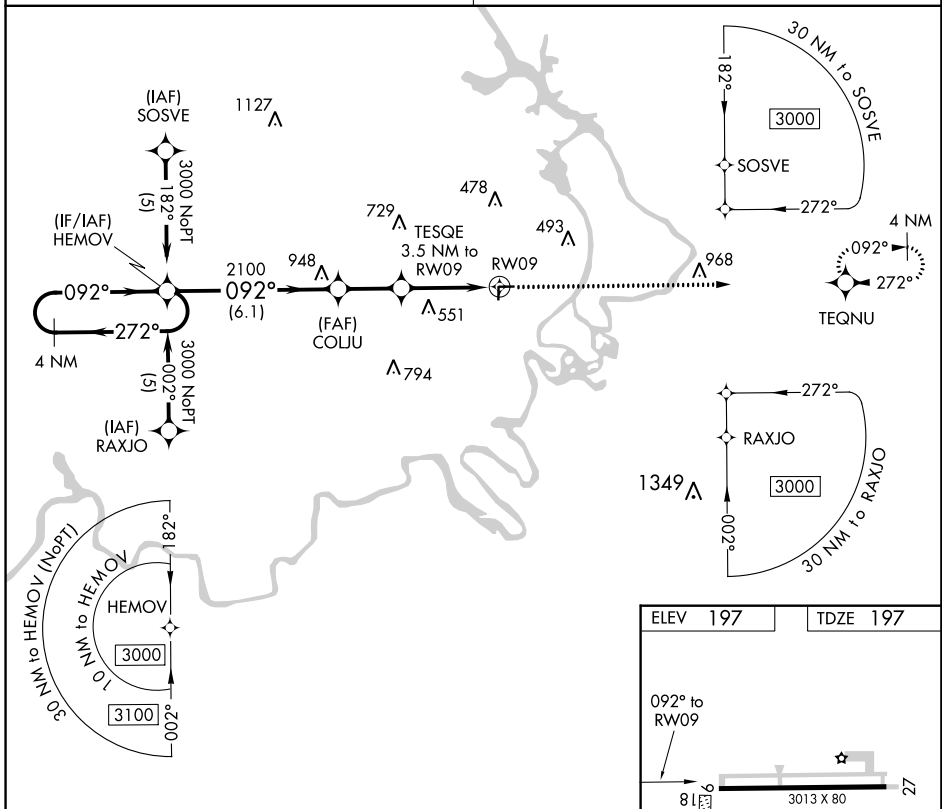
RNP APCH.

**NA** Rwy 9 helicopter visibility reduction below 1 SM NA. Procedure NA at night. Use Montgomery Rgnl (Dannelly Field) altimeter setting; when not received, use Alexander City altimeter setting and increase all MDA 120 feet and increase LNAV Cat A visibility 1/2 SM and LNAV Cat C visibility 1/2 SM.

MISSED APPROACH: Climb to 3000 direct TEQNU and hold.

MONTGOMERY APP CON \*  
**121.2 269.05**

UNICOM  
**123.05 (CTAF) 0**



CATEGORY	A	B	C	D
LNAV MDA	1000-1 803 (900-1)	1000-1 1/4 803 (900-1 1/4)	1000-2 1/4 803 (900-2 1/4)	NA

SE-4, 10 OCT 2019 to 07 NOV 2019

SE-4, 10 OCT 2019 to 07 NOV 2019