

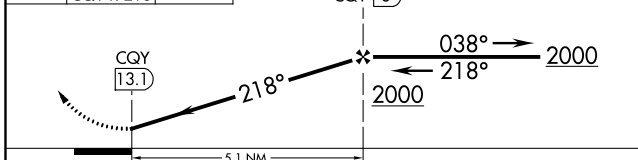
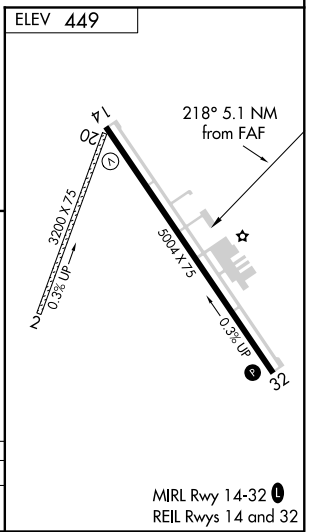
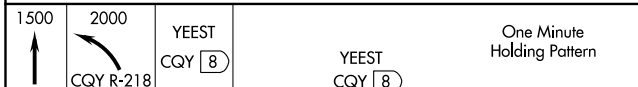
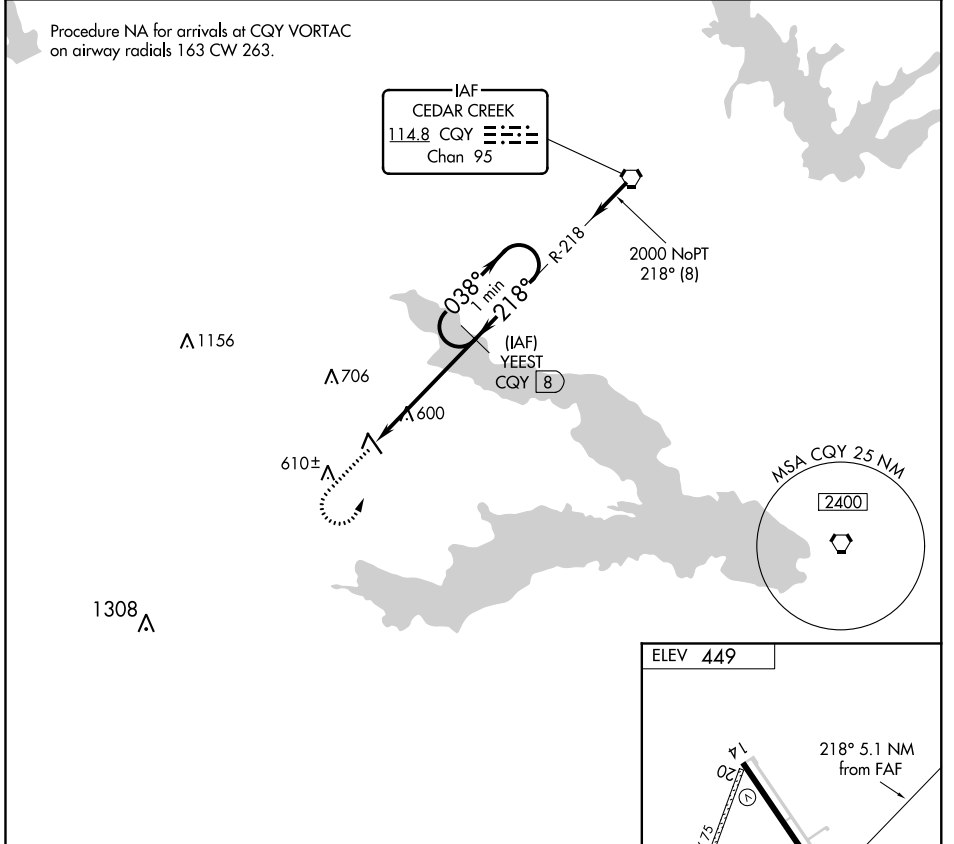
VORTAC CQY <b>114.8</b> Chan <b>95</b>	APP CRS <b>218°</b>	Rwy Idg TDZE Apt Elev	<b>N/A</b> <b>N/A</b> <b>449</b>
--	------------------------	-----------------------------	--

# VOR/DME-A

C DAVID CAMPBELL FIELD-CORSICANA MUNI (CRS)

**Procedure NA at night. Circling NA to Rwys 2 and 20.**  
**NA** MISSED APPROACH: Climb to 1500 then climbing left turn to 2000 via CQY VORTAC R-218 to YEEST/CQY 8 DME and hold.

ASOS <b>120.675</b>	FORT WORTH CENTER <b>135.25 265.1</b>	UNICOM <b>122.8 (CTAF) 0</b>
------------------------	--	---------------------------------



CATEGORY	A	B	C	D
CIRCLING	860-1 411 (500-1)	960-1 511 (600-1)	960-1½ 511 (600-1½)	1060-2 611 (700-2)

SC-2, 10 OCT 2019 to 07 NOV 2019

SC-2, 10 OCT 2019 to 07 NOV 2019