

WAAS CH 82714 W22A	APP CRS 217°	Rwy Idg TDZE 465 Apt Elev 468	5001
--	------------------------	---	-------------

AL-6386 (FAA)

RNAV (GPS) RWY 22

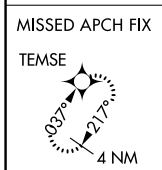
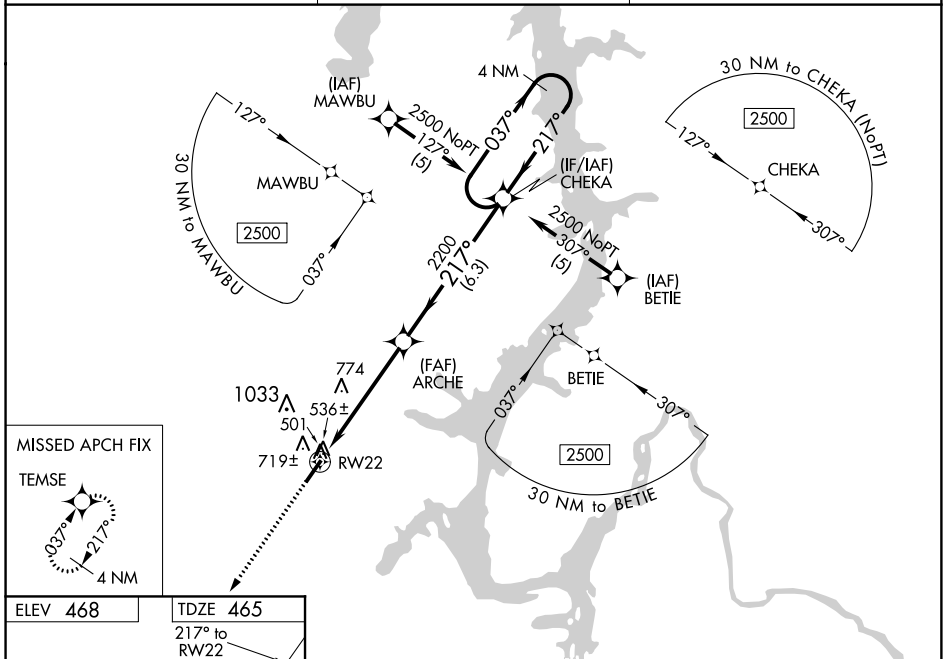
BENTON COUNTY (ØM4)

RNP APCH.

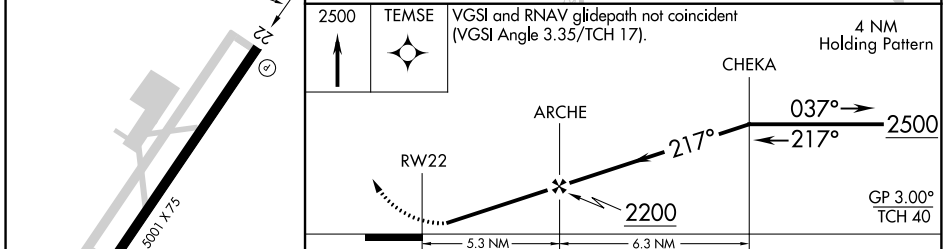
Baro-VNAV NA. Rwy 22 helicopter visibility reduction below 1 SM NA. Use Beech River Rgnl altimeter setting; when not received, use Jackson altimeter setting and increase all DA 58 feet and all MDA 60 feet and increase LPV all Cats visibility ¼ mile, LNAV/VNAV all Cats visibility ¼ mile, and LNAV Cat C visibility ¼ mile. Straight-in Rwy 22 NA at night, Circling Rwy 22 NA at night.

MISSED APPROACH: Climb to 2500 direct TEMSE and hold.

BEECH RIVER RGNL AWOS-3 118.125	MEMPHIS CENTER 125.85 379.25	UNICOM 122.8 (CTAF)
---	--	-------------------------------



ELEV 468	TDZE 465
	217° to RWY 22



	A	B	C	D
LPV DA	833-1¼	368 (400-1¼)		NA
LNAV/VNAV DA	980-1¾	515 (600-1¾)		NA
LNAV MDA	1080-1	615 (700-1)	1080-1¾ 615 (700-1¾)	NA
CIRCLING	1140-1	672 (700-1)	1140-2 672 (700-2)	NA

SE-1, 10 OCT 2019 to 07 NOV 2019

SE-1, 10 OCT 2019 to 07 NOV 2019