

| | | | |
|--|------------------------|---|-------------|
| WAAS CH 77814 W04A | APP CRS 037° | Rwy Idg TDZE 468 Apt Elev 468 | 5001 |
|--|------------------------|---|-------------|

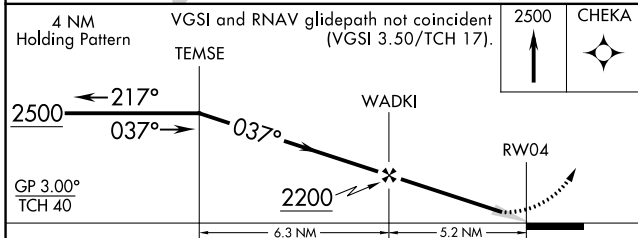
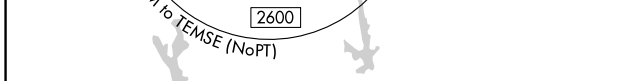
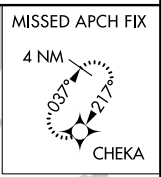
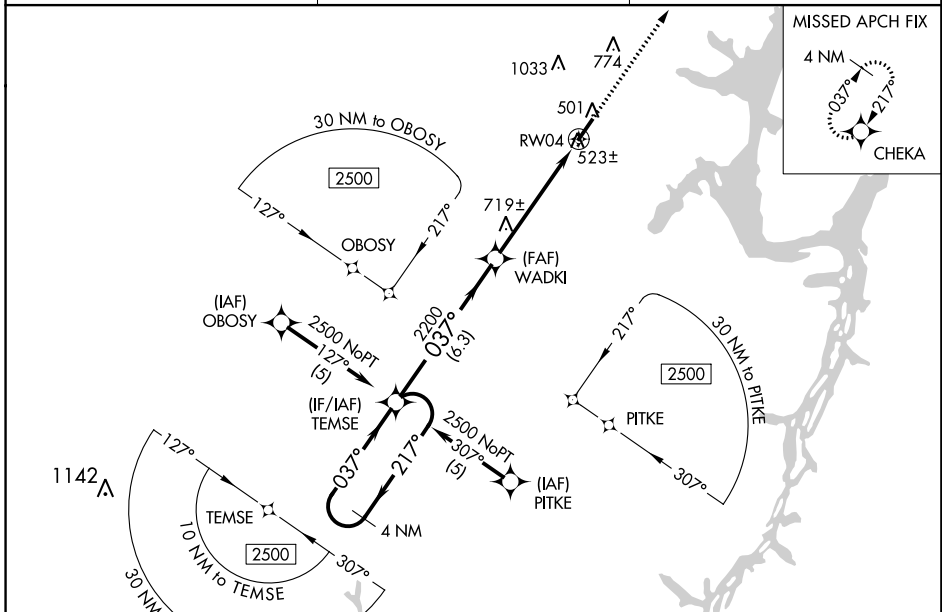
RNAV (GPS) RWY 4

BENTON COUNTY (ØM4)

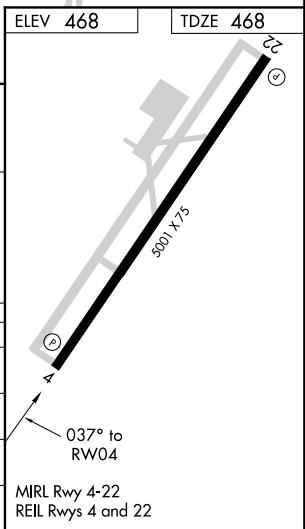
NA Baro-VNAV NA. DME/DME RNP-0.3NA. Use Beech River Rgnl altimeter setting; when not received use Jackson altimeter setting and increase all DA 58 feet and all MDA 60 feet and increase LPV all Cats visibility ¼ mile, LNAV/VNAV all Cats visibility ¼ mile, and LNAV Cat C visibility ¼ mile. Night landing: Rwy 22 NA.

MISSED APPROACH:
Climb to 2500 direct
CHEKA and hold.

| | | |
|---|--|-------------------------------|
| BEECH RIVER RGNL AWOS-3 118.125 | MEMPHIS CENTER 125.85 379.25 | UNICOM 122.8 (CTAF) |
|---|--|-------------------------------|



| CATEGORY | A | B | C | D |
|--------------|--------|--------------|-------------------------|----|
| LPV DA | 771-1 | 303 (400-1) | | NA |
| LNAV/VNAV DA | 944-1¾ | 476 (500-1¾) | | NA |
| LNAV MDA | 1040-1 | 572 (600-1) | 1040-1½ 572 (600-1½) | NA |
| CIRCLING | 1140-1 | 672 (700-1) | 1140-2 672 (700-2) | NA |



SE-1, 10 OCT 2019 to 07 NOV 2019

SE-1, 10 OCT 2019 to 07 NOV 2019