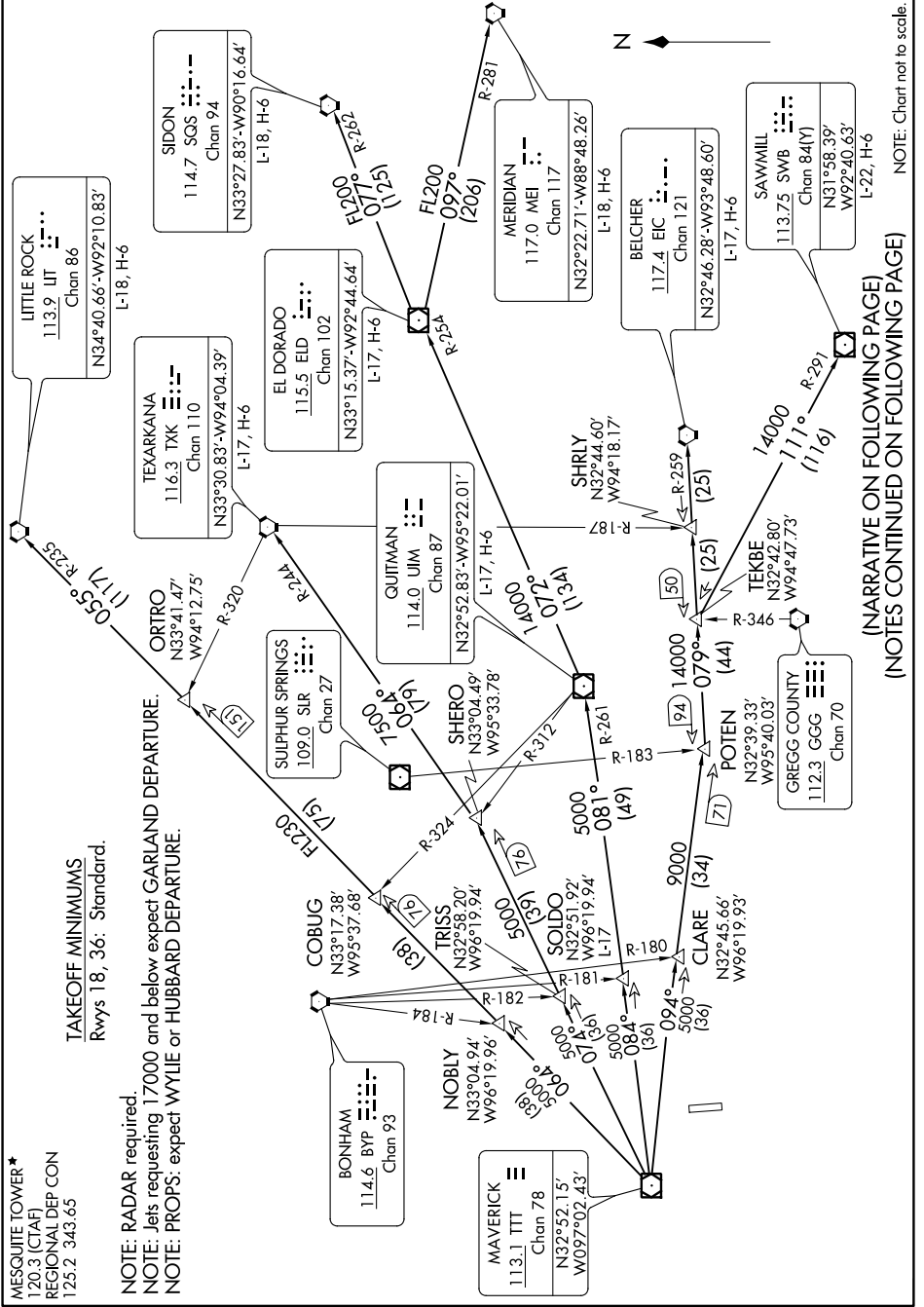


DALLAS FOUR DEPARTURE

MESQUITE, TEXAS

SC-2, 10 OCT 2019 to 07 NOV 2019



NOTE: Chart not to scale.

(NARRATIVE ON FOLLOWING PAGE)
(NOTES CONTINUED ON FOLLOWING PAGE)

SC-2, 10 OCT 2019 to 07 NOV 2019

DALLAS FOUR DEPARTURE

MESQUITE, TEXAS

TAKEOFF MINIMUMS
Rwys 18, 36: Standard.

MESQUITE TOWER*
120.3 (CTAF)
REGIONAL DEP CON
125.2 343.65

NOTE: RADAR required.
NOTE: Jets requesting 17000 and below expect GARLAND DEPARTURE.
NOTE: PROPS: expect WYLIE or HUBBARD DEPARTURE.

MAVERICK
113.1 TTT
Chan 78
N32°52.15'
W097°02.43'

BONHAM
114.6 BYP
Chan 93
N33°04.94'
W96°19.96'

NOBLY
N33°04.94'
W96°19.96'

COBUG
N33°17.38'
W95°37.68'

TRISS
N32°58.20'
W96°19.94'

SOLDO
N32°51.92'
W96°19.94'

CLARE
N32°45.66'
W96°19.93'

SULPHUR SPRINGS
109.0 SIR
Chan 27
N33°30.83'-W94°04.39'

SHERO
N33°04.49'
W95°33.78'

QUITMAN
114.0 UJM
Chan 87
N32°52.83'-W95°22.01'

TEXARKANA
116.3 TKK
Chan 110
N33°30.83'-W94°04.39'

ELDORADO
115.5 ELD
Chan 102
N33°15.37'-W92°44.64'

LITTLE ROCK
113.9 LT
Chan 86
N34°40.66'-W92°10.83'

SIDON
114.7 SGS
Chan 94
N33°27.83'-W90°16.64'

MERIDIAN
117.0 MEI
Chan 117
N32°22.71'-W88°48.26'

BELCHER
117.4 EIC
Chan 121
N32°46.28'-W93°48.60'

SAWMILL
113.75 SWB
Chan 84(Y)
N31°58.39'
W92°40.63'

GREGG COUNTY
112.3 GGG
Chan 70
N32°39.33'
W95°40.03'

TEKBE
N32°42.80'
W94°47.73'

SHRILY
N32°44.60'
W94°18.17'

ORTRO
N33°41.47'
W94°12.75'

POTEM
N32°39.33'
W95°40.03'

14000
111.1
(116)