

CTAF 120.3
REGIONAL DEP CON
125.2 343.65

TAKEOFF MINIMUMS
Rwys 18, 36: Standard.

NOTE: RADAR required.
NOTE: For jets requesting 17000 and below.
NOTE: Props expect WYLIE or HUBBARD departure.
NOTE: SOLDO TRANSITION: ATC assigned.

MAVERICK
113.1 TTT
Chan 78
N32°52.15'-W97°02.43'

TEXARKANA
116.3 TXK
Chan 110
N33°30.83'-W94°04.39'

PARIS
113.6 PRX
Chan 83
N33°32.54'-W95°26.90'

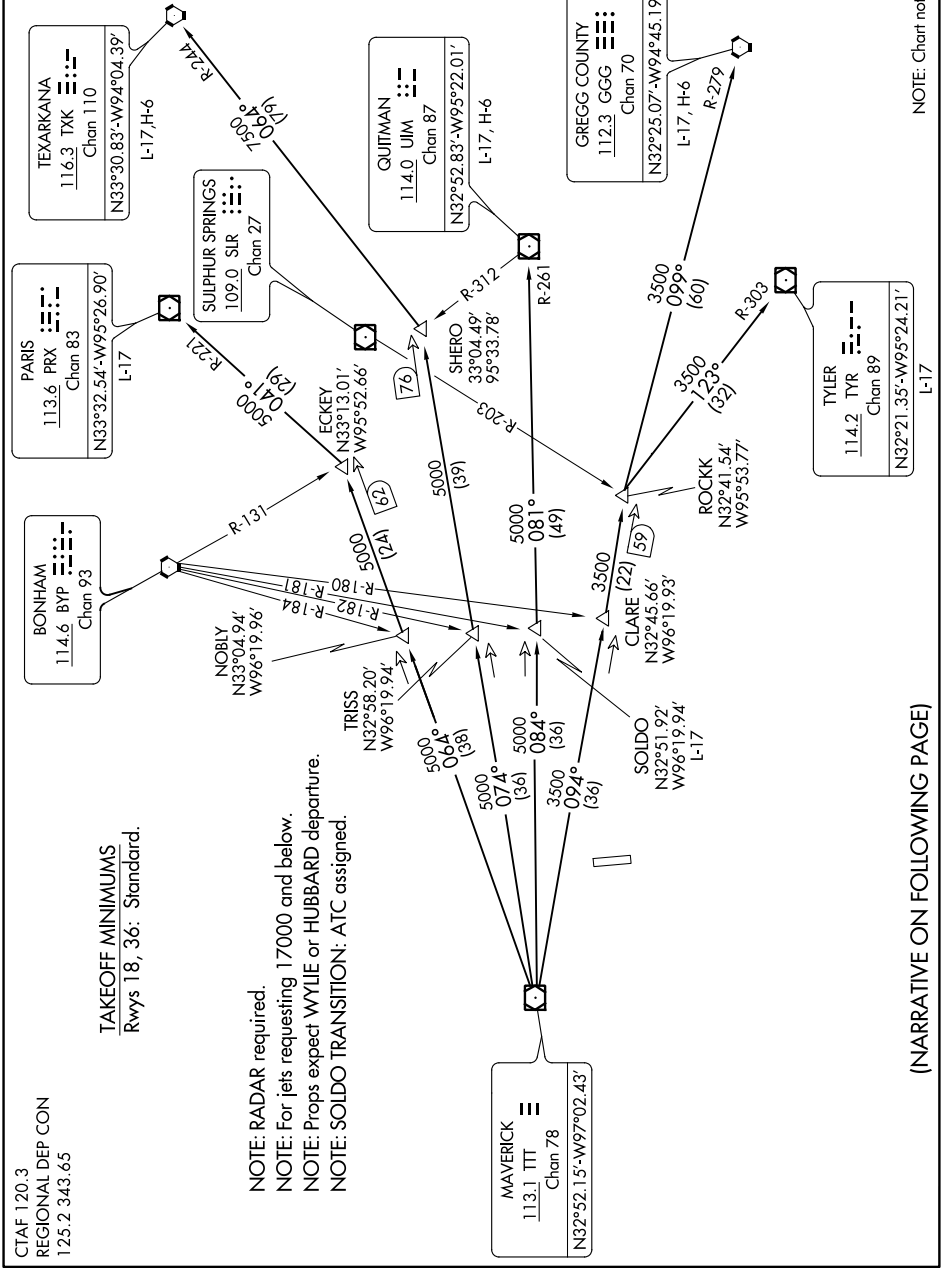
BONHAM
114.6 BVP
Chan 93

SULPHUR SPRINGS
109.0 SILR
Chan 27

QUITMAN
114.0 UIM
Chan 87
N32°52.83'-W95°22.01'

GREGG COUNTY
112.3 GGG
Chan 70
N32°25.07'-W94°45.19'

TYLER
114.2 TYR
Chan 89
N32°21.35'-W95°24.21'



NOTE: Chart not to scale.

(NARRATIVE ON FOLLOWING PAGE)