

KUSSO FIVE DEPARTURE (RNAV)

SC-2, 10 OCT 2019 to 07 NOV 2019

**TOP ALTITUDE:
ASSIGNED BY ATC**

REGIONAL DEP CON
125.2 343.65
CTAF 120.3

TAKEOFF MINIMUMS
Rwy 18, 36: Standard.

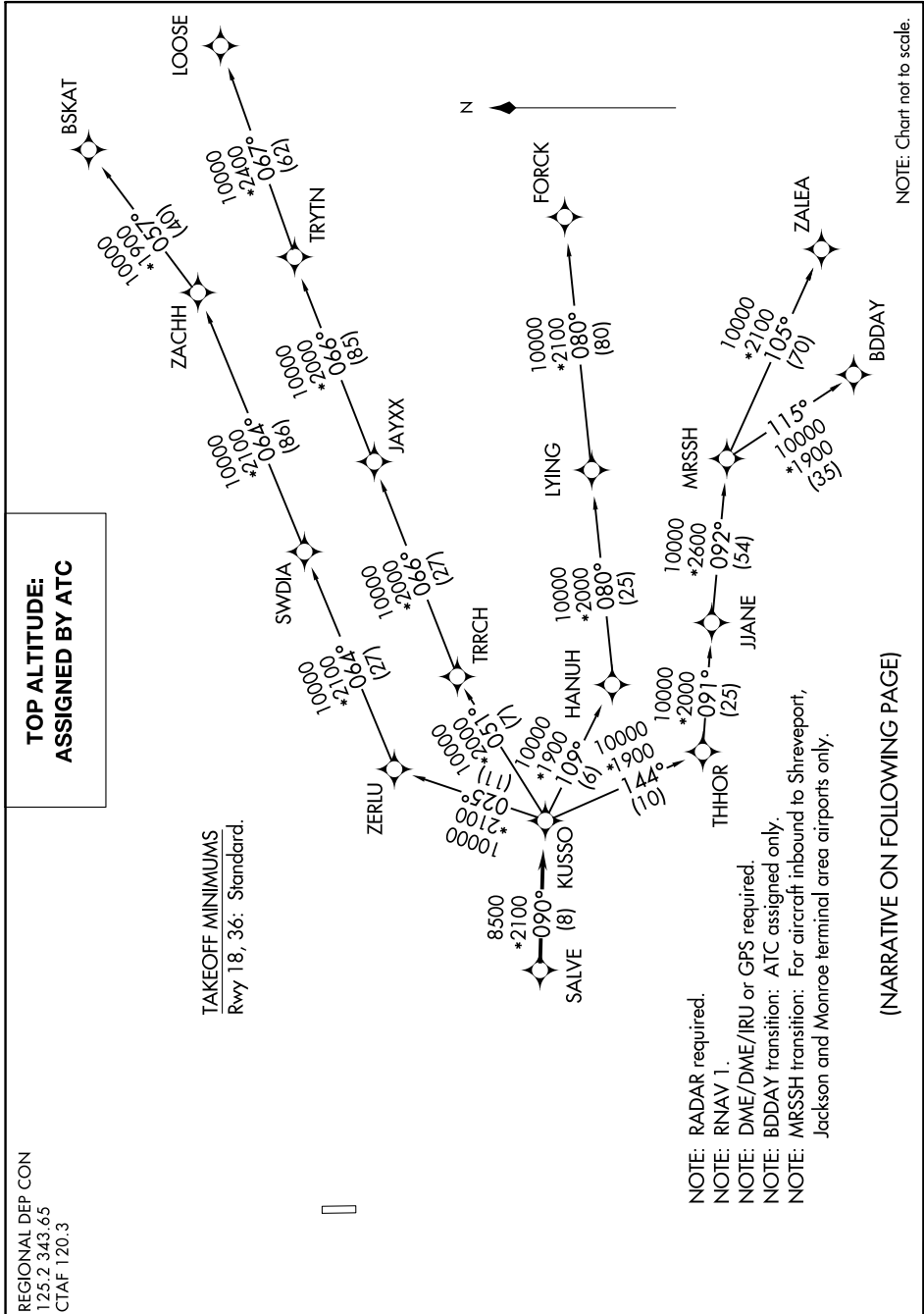


NOTE: Chart not to scale.

(NARRATIVE ON FOLLOWING PAGE)

SC-2, 10 OCT 2019 to 07 NOV 2019

KUSSO FIVE DEPARTURE (RNAV)



NOTE: RADAR required.
 NOTE: RNAV 1.
 NOTE: DME/DME/IRU or GPS required.
 NOTE: BDDAY transition: ATC assigned only.
 NOTE: MRSSH transition: For aircraft inbound to Shreveport, Jackson and Monroe terminal area airports only.