

WAAS CH <b>58301</b> <b>W18A</b>	APP CRS <b>178°</b>	Rwy Idg <b>6000</b> TDZE <b>447</b> Apt Elev <b>447</b>
--	------------------------	---

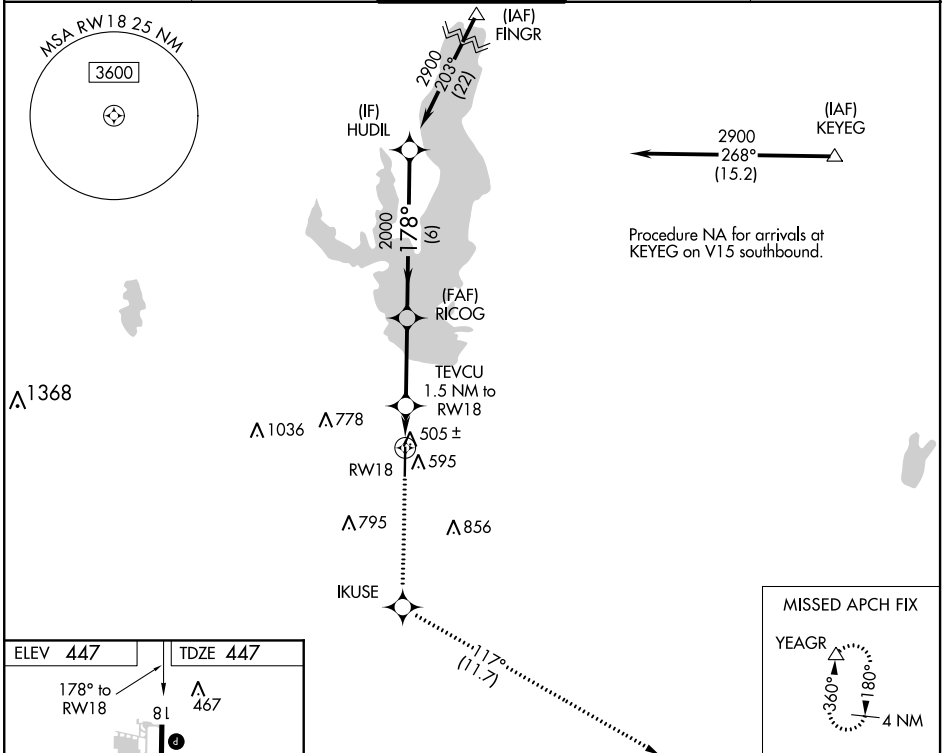
# RNAV (GPS) RWY 18

MESQUITE METRO (HQZ)

**⚠ DME/DME RNP-0.3 NA.** When local altimeter setting not received, use Dallas Love Field altimeter setting and increase all DA/MDA 60 feet. Increase LPV all Cats visibility to 1 mile, LNAV Cat C visibility to 1 3/8 and Circling Cat C visibility to 2 1/4. Helicopter visibility reduction below 3/4 SM NA.

**MISSED APPROACH:** Climb to 3000 direct IKUSE then on track 117° to YEAGR and hold.

AWOS-3 <b>118.175</b>	REGIONAL APP CON <b>125.2 343.65</b>	MESQUITE TOWER★ <b>120.3</b> (CTAF) <b>0</b>	GND CON <b>118.85</b>	UNICOM <b>123.05</b>
--------------------------	---	---	--------------------------	-------------------------



ELEV <b>447</b>	TDZE <b>447</b>
-----------------	-----------------

178° to RW18

81

467

TWR 535

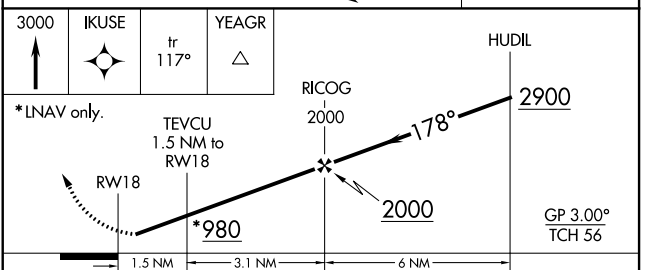
499±

6000

36

480±

MIRL Rwy 18-36 **0**  
REIL Rwy 18 and 36 **0**  
RLS Rwy 18 and 36 **0**



CATEGORY	A	B	C	D
LPV DA	697-3/4 250 (300-3/4)			NA
LNAV MDA	860-1	413 (500-1)	860-1 1/8 413 (500-1 1/8)	NA
<b>C</b> CIRCLING	960-1	513 (600-1)	1160-2 713 (800-2)	NA

SC-2, 10 OCT 2019 to 07 NOV 2019

SC-2, 10 OCT 2019 to 07 NOV 2019