

MESQUITE, TEXAS

AL-6444 (FAA)

18088

| | | |
|--|------------------------|---|
| WAAS CH 78401 W36A | APP CRS 358° | Rwy Idg 6000 TDZE 443 Apt Elev 447 |
|--|------------------------|---|

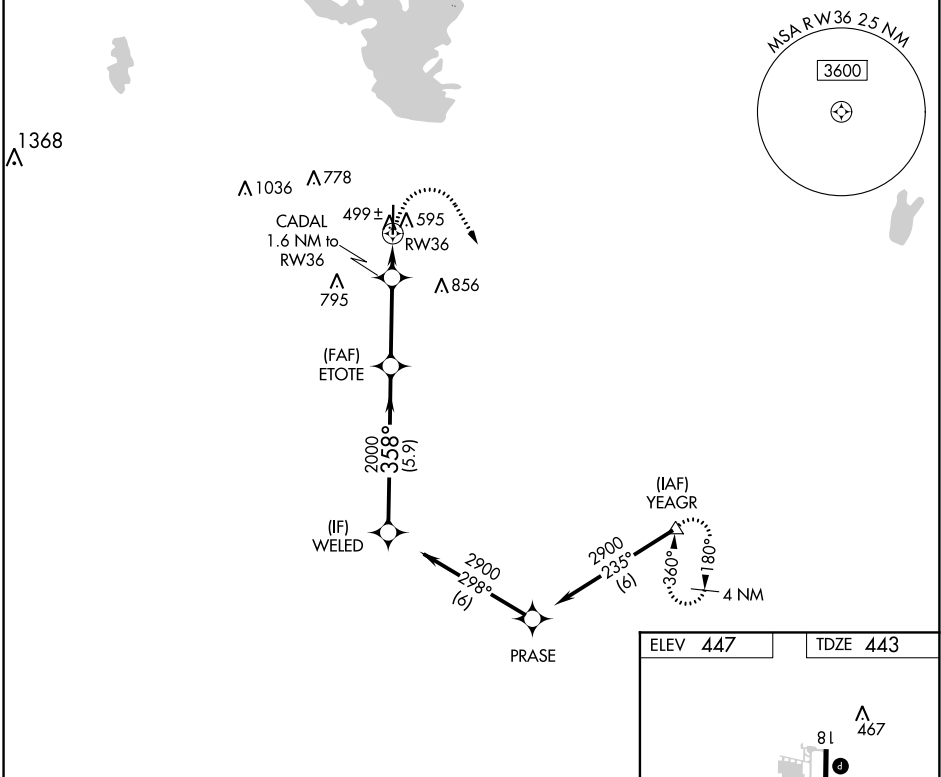
RNAV (GPS) RWY 36

MESQUITE METRO (HQZ)

⚠ DME/DME RNP-0.3 NA. When local altimeter setting not received, use Dallas Love Field altimeter setting and increase all DA/MDA 60 feet. Increase LPV all Cats visibility to 1 mile, increase Circling Cat C visibility to 2 1/4 mile. VDP NA when using Dallas Love Field altimeter setting.

MISSED APPROACH:
Climbing right turn to 3000 direct YEAGR and hold.

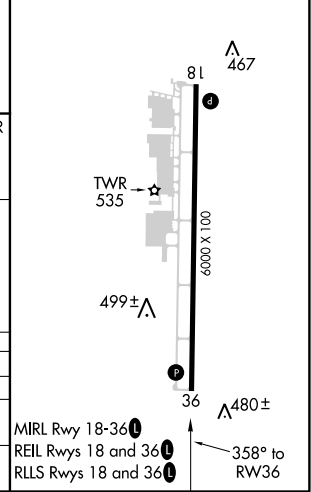
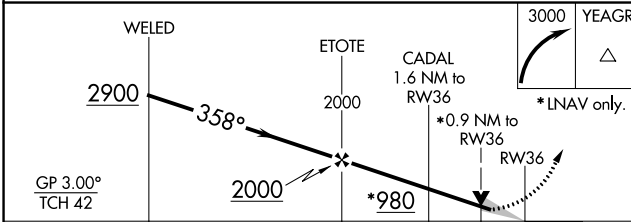
| | | | | |
|--------------------------|---|---|--------------------------|-------------------------|
| AWOS-3 118.175 | REGIONAL APP CON 125.2 343.65 | MESQUITE TOWER ★ 120.3 (CTAF) 0 | GND CON 118.85 | UNICOM 123.05 |
|--------------------------|---|---|--------------------------|-------------------------|



SC-2, 10 OCT 2019 to 07 NOV 2019

SC-2, 10 OCT 2019 to 07 NOV 2019

| | |
|----------|----------|
| ELEV 447 | TDZE 443 |
|----------|----------|



| CATEGORY | A | B | C | D |
|-------------------|---------|---------------|-----------------------|----|
| LPV DA | 693-7/8 | 250 (300-7/8) | | NA |
| RNAV MDA | 760-1 | 317 (400-1) | | NA |
| C CIRCLING | 960-1 | 513 (600-1) | 1160-2 713 (800-2) | NA |

MIRL Rwy 18-36
REIL Rwys 18 and 36
RLS Rwys 18 and 36

MESQUITE, TEXAS
Amdt 2 25JUN15

32°45'N-96°32'W

RNAV (GPS) RWY 36