

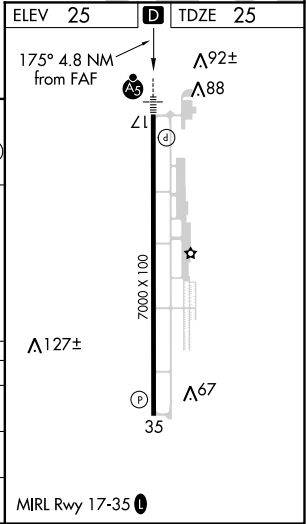
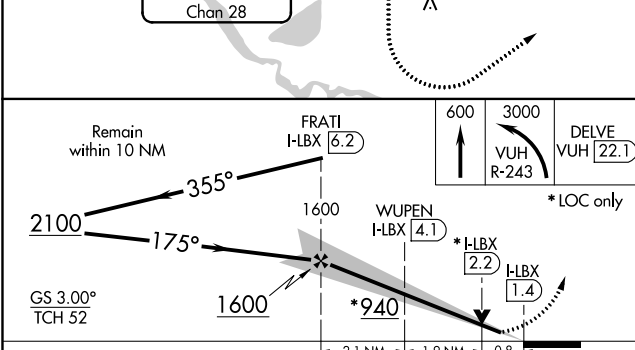
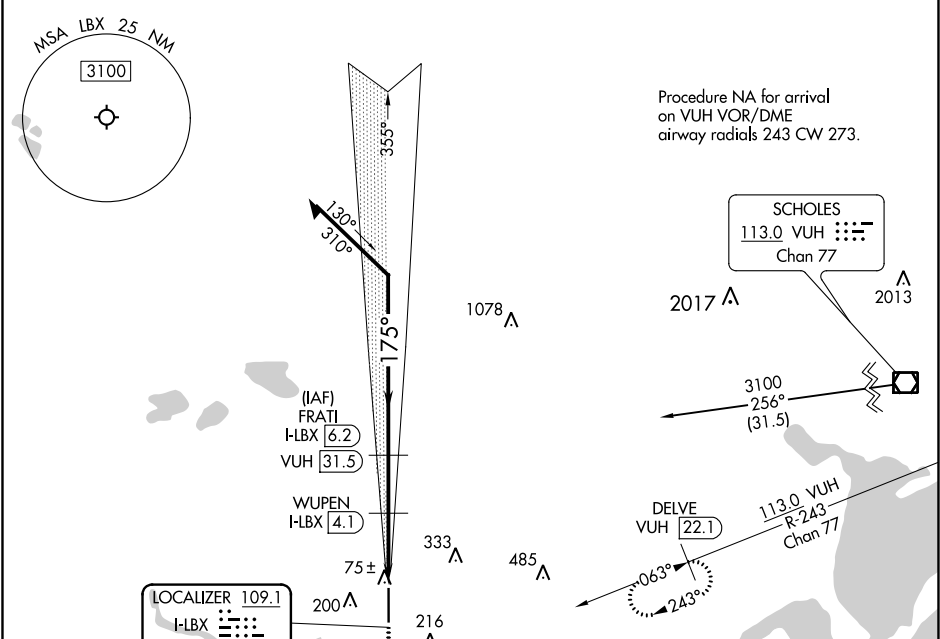
LOC/DME I-LBX <b>109.1</b> Chan <b>28</b>	APP CRS <b>175°</b>	Rwy Idg <b>7000</b> TDZE <b>25</b> Apt Elev <b>25</b>
---	------------------------	---

# ILS or LOC RWY 17

TEXAS GULF COAST RGNL (L.B.X)

DME required.		MALSR	MISSED APPROACH: Climb to 600 then climbing left turn to 3000 on VUH VOR/DME then climbing DELVE/VUH 22.1 DME and hold.
⚠ For inop ALS, increase S-LOC 17 Cat C/D visibility to 7/8 SM. ⚠ Circling NA east of Rwy 17-35.			

ASOS <b>119.925</b>	HOUSTON APP CON <b>134.45 284.0</b>	CLNC DEL <b>125.2</b>	UNICOM <b>123.0 (CTAF) 0</b>
------------------------	--	--------------------------	---------------------------------



CATEGORY	A	B	C	D
S-ILS 17		225-1/2	200 (200-1/2)	
S-LOC 17		340-1/2	315 (400-1/2)	
CIRCLING	500-1	475 (500-1)	500-1 1/2 475 (500-1 1/2)	620-2 595 (600-2)

SC-5, 10 OCT 2019 to 07 NOV 2019

SC-5, 10 OCT 2019 to 07 NOV 2019