

KARRR FIVE DEPARTURE (RNAV)

**TOP ALTITUDE:
ASSIGNED BY ATC**

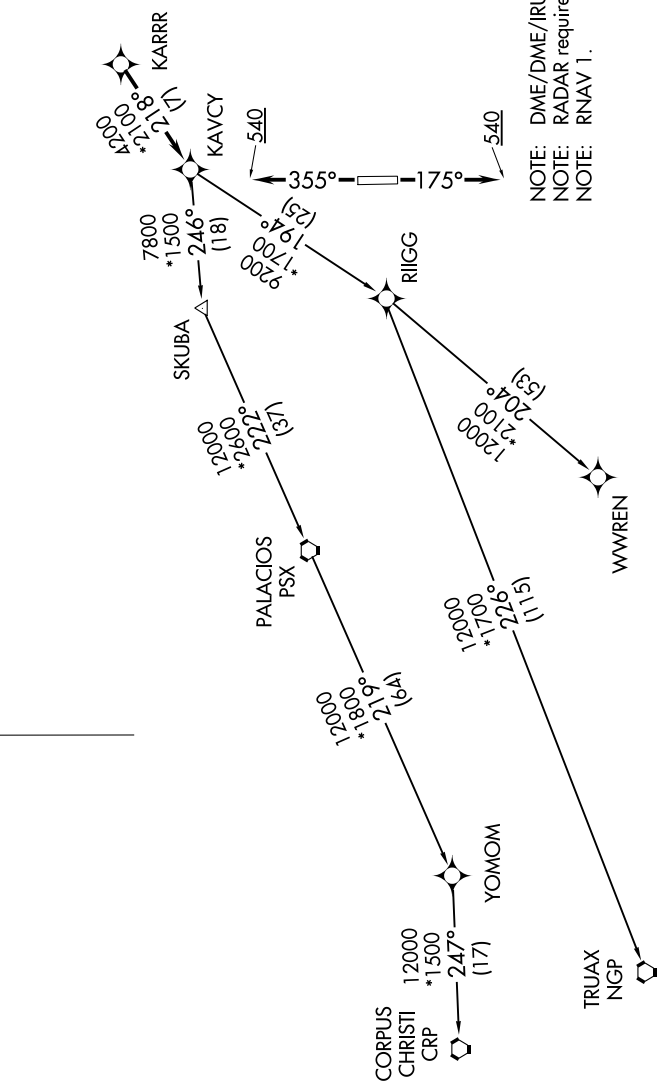
SC-5, 10 OCT 2019 to 07 NOV 2019

ASOS
119.925
CTAF
123.0
CLNC DEL
125.2
HOUSTON DEP CON
134.45 284.0



TAKEOFF MINIMUMS:

Rwy 17, 35: Standard with minimum climb of 500' per NM to 540.



NOTE: DME/DME/IRU or GPS required.
NOTE: RADAR required.
NOTE: RNAV 1.

(NARRATIVE ON FOLLOWING PAGE)

NOTE: Chart not to scale.

SC-5, 10 OCT 2019 to 07 NOV 2019