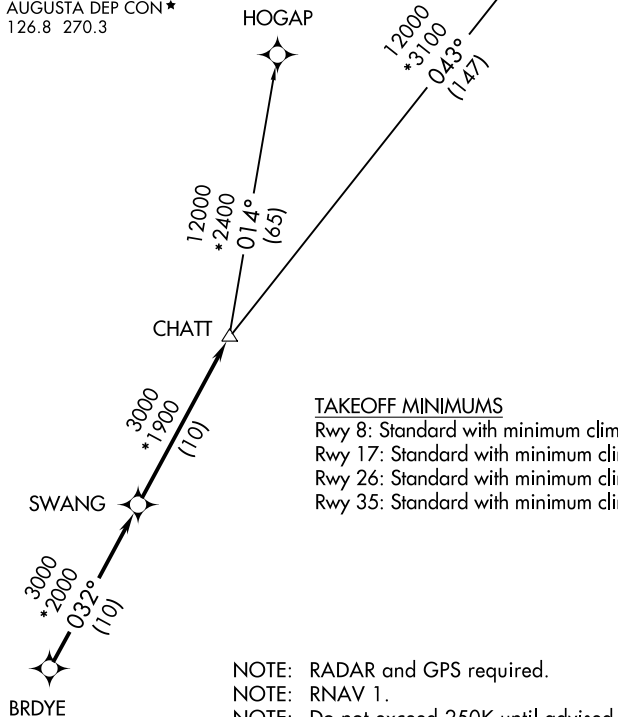


# CHATT SIX DEPARTURE (RNAV)

ATIS  
132.75  
CLNC DEL  
118.65  
GND CON  
121.9 348.6  
AUGUSTA TOWER \*  
118.7 (CTAF) 239.3  
AUGUSTA DEP CON \*  
126.8 270.3

GREENSBORO  
GSO

**TOP ALTITUDE:  
ASSIGNED BY ATC**



### TAKEOFF MINIMUMS

Rwy 8: Standard with minimum climb of 392' per NM to 2600.  
Rwy 17: Standard with minimum climb of 267' per NM to 2400.  
Rwy 26: Standard with minimum climb of 324' per NM to 2000.  
Rwy 35: Standard with minimum climb of 305' per NM to 2500.

- NOTE: RADAR and GPS required.
- NOTE: RNAV 1.
- NOTE: Do not exceed 250K until advised by ATC.
- NOTE: For turbojet aircraft during Masters golf tournament week.
- NOTE: Use 118.2 for CLNC DEL during Masters golf tournament week.



NOTE: Chart not to scale.



### DEPARTURE ROUTE DESCRIPTION

TAKEOFF RWY 8, 17, 26, 35: Climb on assigned heading for RADAR vectors to BRDYE, then on depicted route to CHATT, thence. . . .  
. . . .maintain altitude assigned by ATC. Expect clearance to filed altitude/flight level within 10 minutes after departure.

GREENSBORO TRANSITION (CHATT6.GSO)  
HOGAP TRANSITION (CHATT6.HOGAP)