

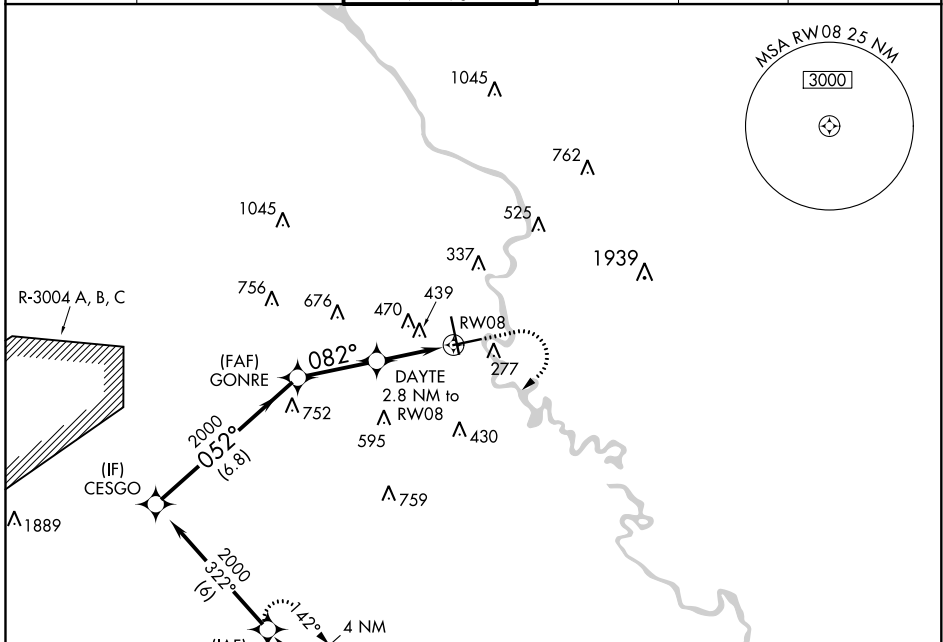
APP CRS	Rwy Idg	<b>6002</b>
<b>082°</b>	TDZE	<b>137</b>
	Apt Elev	<b>146</b>

# RNAV (GPS) Y RWY 8

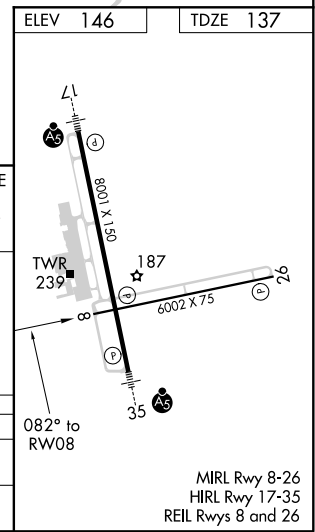
AUGUSTA RGNL AT BUSH FIELD (AGS)

RNP APCH		<p>▼ Rwy 8 helicopter visibility reduction below 3/4 SM NA. VDP NA with Daniel Field altimeter setting.                  ▲ When local altimeter setting not received, use Daniel Field altimeter setting and increase all MDA 60 feet; increase LNAV Cats C/D visibility 1/8 mile and Circling Cats C/D visibility 1/4 mile.</p>		<p>MISSED APPROACH:                  Climb to 1200 then climbing right turn to 2000 direct GUKVE and hold.</p>	
----------	--	--	--	--	--

ATIS	AUGUSTA APP CON *	AUGUSTA TOWER *	GND CON	CLNC DEL	UNICOM
<b>132.75</b>	<b>126.8 270.3</b>	<b>118.7 (CTAF) 0 239.3</b>	<b>121.9 348.6</b>	<b>118.65</b>	<b>122.95</b>



Procedure NA for arrivals at SARDY on V185 southeast bound.



<p>VGSI and descent angles not coincident (VGSI Angle 3.00/TCH 64).</p>		1200	2000	GUKVE
CESGO	GONRE	DAYTE		
2000	2000	1080		
052°	082°	3.00°		
6.8 NM	2.9 NM	1.6 NM		
TCH 55				

CATEGORY	A	B	C	D
LNAV MDA	700-1	563 (600-1)	700-1 7/8	563 (600-1 7/8)
CIRCLING	780-1	634 (700-1)	780-1 3/4	900-2 1/2
			634 (700-1 3/4)	754 (800-2 1/2)

SE-4, 16 JUL 2020 to 13 AUG 2020

SE-4, 16 JUL 2020 to 13 AUG 2020