

WAAS CH 45632 W24A	APP CRS 240°	Rwy Idg TDZE Apt Elev	4601 2573 2573
--	------------------------	-----------------------------	---

RNAV (GPS) RWY 24

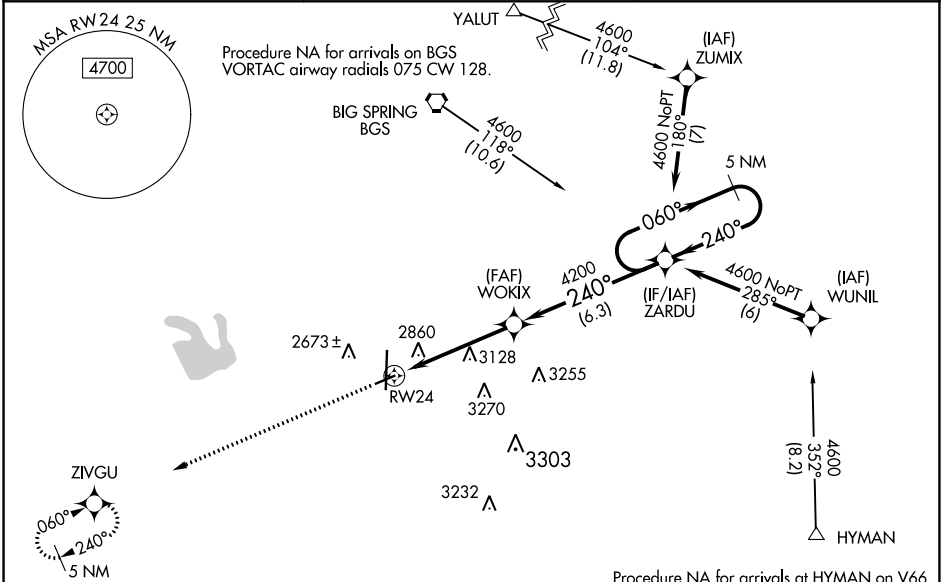
BIG SPRING McMAHON-WRINKLE (BPG)

RNP APCH.

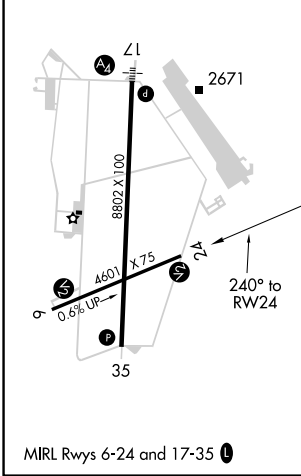
⚠ For uncompensated Baro-VNAV systems, LNAV/VNAV NA below -20°C or above 54°C. When local altimeter setting not received, use Midland Intl Air and Space Port altimeter setting: increase all DA 130 feet and all MDA 140 feet; increase LPV and LNAV/VNAV Cats A/B visibility ½ SM, and LNAV Cat A visibility ¼ SM. Baro-VNAV and VDP NA with Midland Intl Air and Space Port altimeter setting. Rwy 24 helicopter visibility reduction below ¾ SM NA.

MISSED APPROACH: Climb to 4600 direct ZIVGU and hold.

AWOS-3 118.025	FORT WORTH CENTER 133.7 350.2	UNICOM 122.8 (CTAF) 📻
--------------------------	---	--



ELEV 2573	TDZE 2573
-----------	-----------



4600	ZIVGU	VGSI and RNAV glidepath not coincident (VGSI Angle 3.55/TCH 35).	5 NM Holding Pattern
*LNAV only.			
<p>2.1 NM to RWY 24</p> <p>2.9 NM</p> <p>6.3 NM</p> <p>GP 3.00° TCH 45</p>			
CATEGORY	A	B	C
LPV DA	2823-¾	250 (300-¾)	NA
LNAV/VNAV DA	3236-2¼	663 (700-2¼)	NA
LNAV MDA	3380-1 807 (900-1)	3380-1¼ 807 (900-1¼)	NA

SC-2, 16 JUL 2020 to 13 AUG 2020

SC-2, 16 JUL 2020 to 13 AUG 2020