

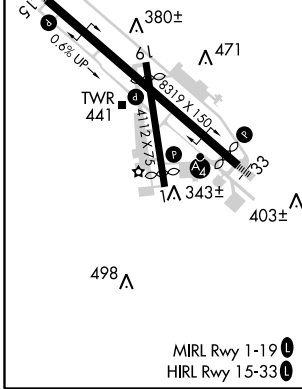
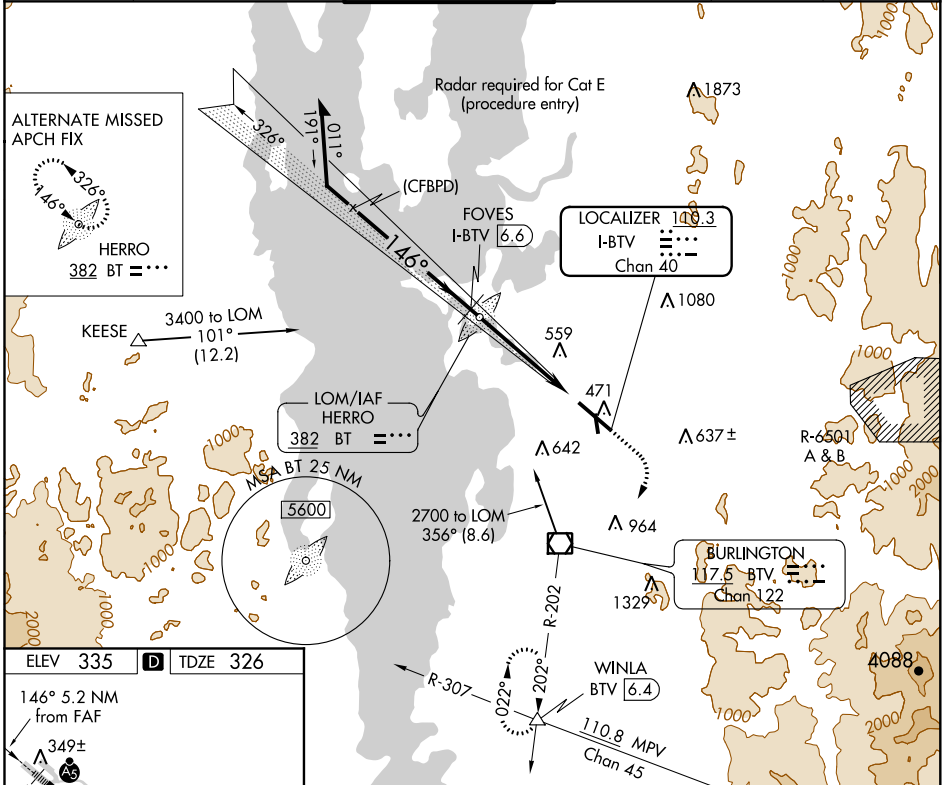
LOC/DME I-BTV 110.3 Chan 40	APP CRS 146°	Rwy Idg TDZE Apt Elev	7820 326 335
---	------------------------	-----------------------------	---

ILS or LOC/DME RWY 15

BURLINGTON INTL (BTV)

	For inop ALS, increase S-LOC 1.5 Cat C, D, and E visibility to RVR 6000. ADF or DME required. Circling Rwy 1 NA at night.	MALSR MISSED APPROACH: Climb to 800 then climbing right turn to 3000 direct BTV VOR/DME on BTV VOR/DME R-202 to WINLA INT/BTV 6.4 DME and hold.
	* -10°C * RVR 1800 authorized with the use of FD or AP or HUD to DA.	

ATIS 123.8 269.9	BURLINGTON APP CON ★ 121.1 278.8	BURLINGTON TOWER ★ 118.3 (CTAF) 257.8	GND CON 126.3 348.6	CLNC DEL 119.15	UNICOM 122.95
----------------------------	--	---	-------------------------------	---------------------------	-------------------------



Remain within 10 NM 2200 2000 GS 3.00° TCH 51	BT LOM 2400 2000 FOVES I-BTV (6.6)	800 3000 BTV BTV R-202 WINLA	* LOC only. * I-BTV (2.5) Procedure turn NA for Cat E.		
CATEGORY S-ILS 15 S-LOC 15 CIRCLING	A 700/24 840-1 505 (600-1)	B 374 (400-½) 860-1 525 (600-1)	C 700/35 1200-2½ 865 (900-2½)	D 374 (400-½) 1380-3	E 1045 (1100-3)

NE-1, 16 JUL 2020 to 13 AUG 2020

NE-1, 16 JUL 2020 to 13 AUG 2020