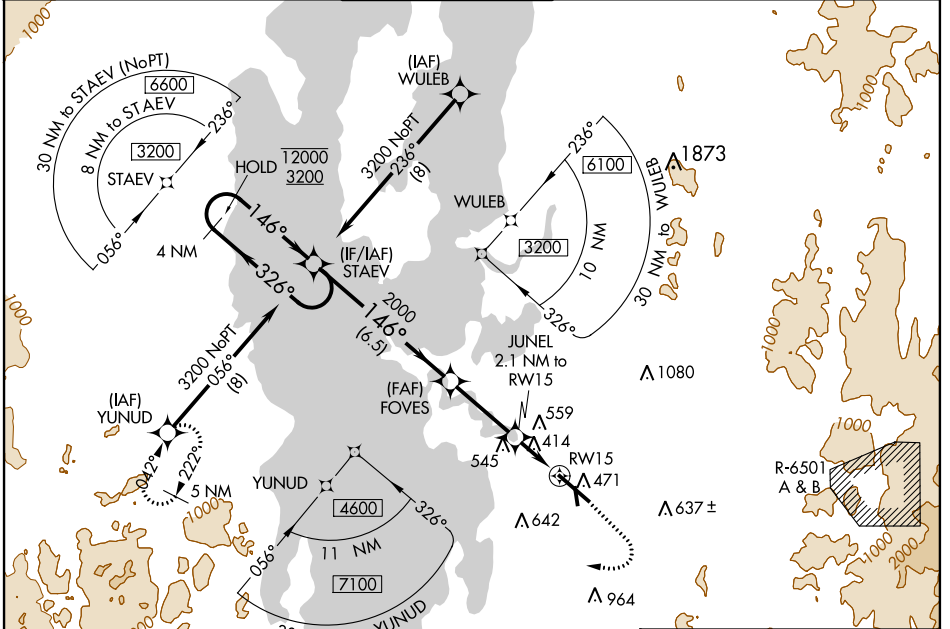


WAAS CH <b>72736</b> <b>W15A</b>	APP CRS <b>146°</b>	Rwy Idg TDZE Apt Elev	<b>7820</b> <b>326</b> <b>335</b>
--	------------------------	-----------------------------	---

# RNAV (GPS) RWY 15

BURLINGTON INTL (BTV)

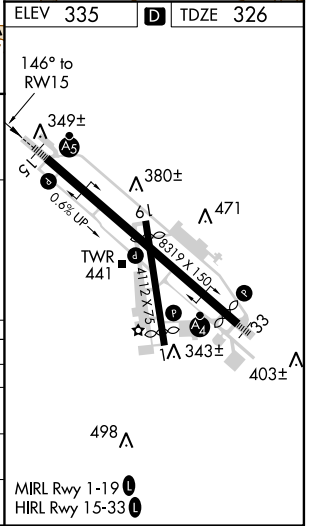
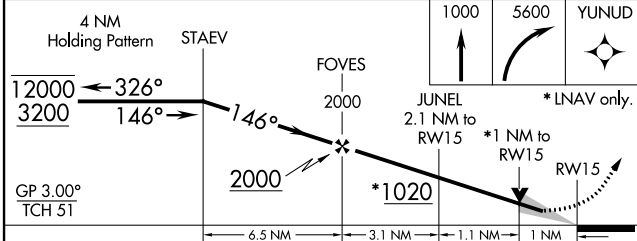
RNP APCH.		MALSR		MISSED APPROACH: Climb to 1000 then climbing right turn to 5600 direct YUNUD and hold. Continue climb-in-hold to 5600.	
<p>Circling Rwy 1 NA at night. For uncompensated Baro-VNAV systems, LNAV/VNAV NA below -19°C or above 54°C.</p> <p> -10°C</p>					
ATIS <b>123.8 269.9</b>	BURLINGTON APP CON * <b>121.1 278.8</b>	BURLINGTON TOWER * <b>118.3 (CTAF) 257.8</b>	GND CON <b>126.3 348.6</b>	CLNC DEL <b>119.15</b>	UNICOM <b>122.95</b>



NE-1, 16 JUL 2020 to 13 AUG 2020

NE-1, 16 JUL 2020 to 13 AUG 2020

ELEV 335	TDZE 326
----------	----------



CATEGORY	A	B	C	D
LPV DA		526/24	200 (200-½)	
LNAV/VNAV DA		645/30	319 (400-¾)	
LNAV MDA	680/24	354 (400-½)	680/30	354 (400-¾)
CIRCLING	840-1 505 (600-1)	860-1 525 (600-1)	1200-2½ 865 (900-2½)	1380-3 1045 (1100-3)