

VOR/DME BTV	APP CRS	Rwy Idg	<b>3386</b>
<b>117.5</b>	<b>036°</b>	TDZE	<b>334</b>
Chan <b>122</b>		Apt Elev	<b>335</b>

# VOR RWY 1

BURLINGTON INTL (BTV)

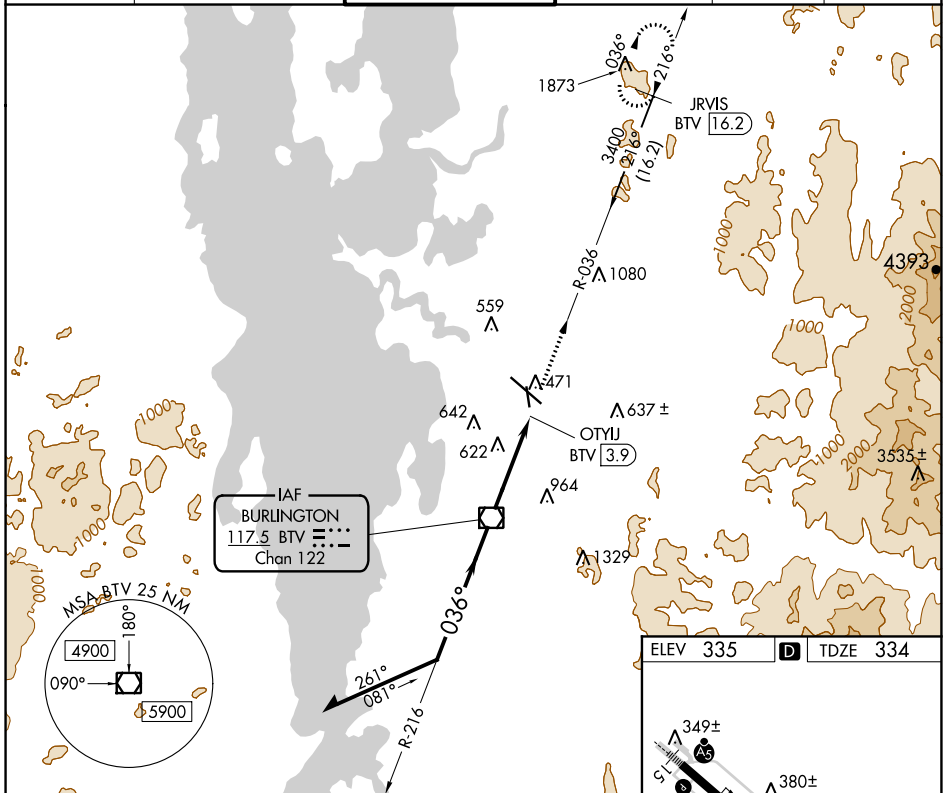
DME required.

**▼**  
**▲** Rwy 1 helicopter visibility reduction below 1 SM NA.  
Straight-in and Circling Rwy 1 NA at night.

**☉** -10°C

MISSED APPROACH: Climb to 3400 on BTV VOR/DME R-036 to JRVIS 16.2 DME and hold.

ATIS	BURLINGTON APP CON *	BURLINGTON TOWER *	GND CON	CLNC DEL	UNICOM
<b>123.8 269.9</b>	<b>121.1 278.8</b>	<b>118.3 (CTAF) 257.8</b>	<b>126.3 348.6</b>	<b>119.15</b>	<b>122.95</b>



NE-1, 16 JUL 2020 to 13 AUG 2020

