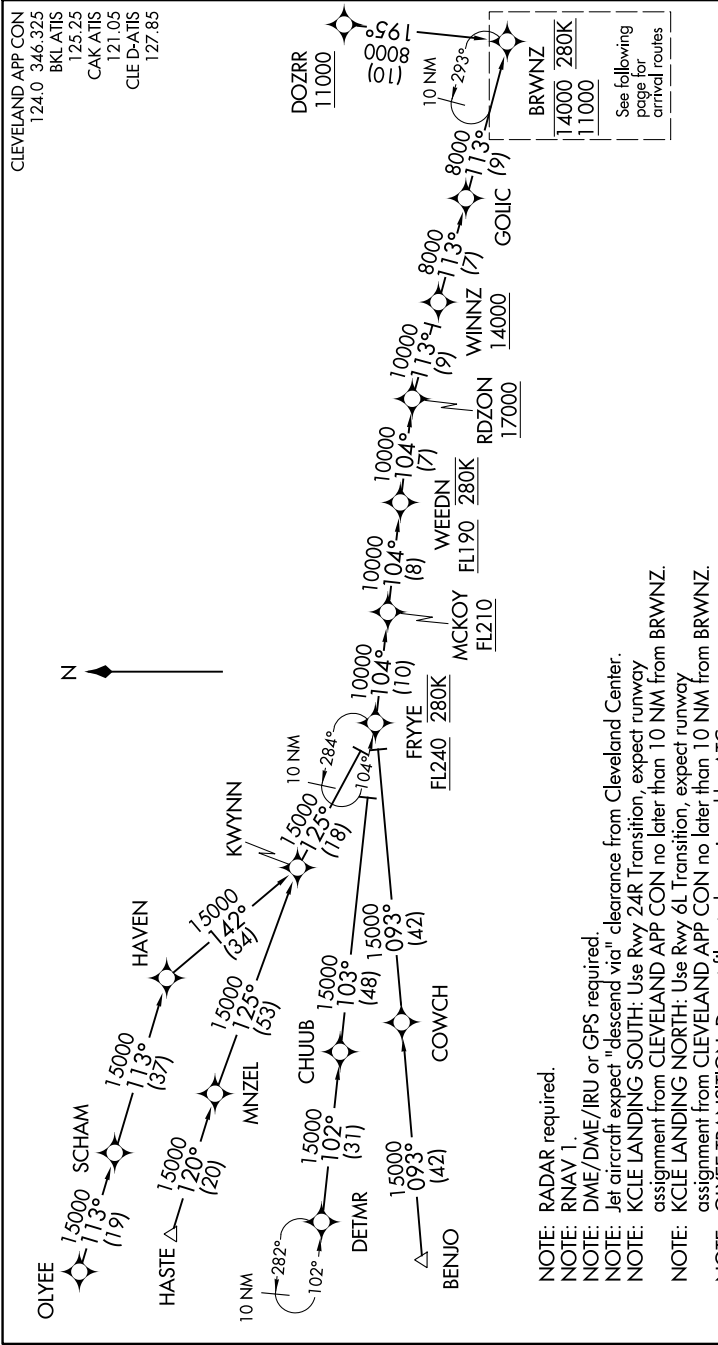


# BRWNZ THREE ARRIVAL (RNAV) Transition Routes

CLEVELAND, OHIO

EC-2, 16 JUL 2020 to 13 AUG 2020



BENJO TRANSITION (BENJO.BRWNZ3)
DETMR TRANSITION (DETMR.BRWNZ3)
DOZRR TRANSITION (DOZRR.BRWNZ3)
HASTE TRANSITION (HASTE.BRWNZ3)
OLYEE TRANSITION (OLYEE.BRWNZ3)
WINNZ TRANSITION (WINNZ.BRWNZ3)

- NOTE: RADAR required.
- NOTE: RNAV 1.
- NOTE: DME/DME/IRU or GPS required.
- NOTE: Jet aircraft expect "descend via" clearance from Cleveland Center.
- NOTE: KCLE LANDING SOUTH: Use Rwy 24R Transition, expect runway assignment from CLEVELAND APP CON no later than 10 NM from BRWNZ.
- NOTE: KCLE LANDING NORTH: Use Rwy 6L Transition, expect runway assignment from CLEVELAND APP CON no later than 10 NM from BRWNZ.
- NOTE: OLYEE TRANSITION: Do not file - to be assigned by ATC.
- NOTE: DOZRR TRANSITION: Except for flights originating in Canada, do not file - to be assigned by ATC.
- NOTE: BENJO TRANSITION: For use by turbojet aircraft only.
- NOTE: WINNZ TRANSITION: For Detroit Metropolitan Area departures only.

NOTE: Chart not to scale.

(CONTINUED ON FOLLOWING PAGE)

EC-2, 16 JUL 2020 to 13 AUG 2020

# BRWNZ THREE ARRIVAL (RNAV) Transition Routes

CLEVELAND, OHIO