

COLUMBUS, MISSISSIPPI

ILS or LOC RWY 31C

LOC I-TBB 108.7	APCH CRS 315°	Rwy Ldg 12,004	31C 8001	31R 218
		TDZE 213	218	218
		Arprt Elev 218	218	218

AL-91 [USAF]

COLUMBUS AFB (KCBM)

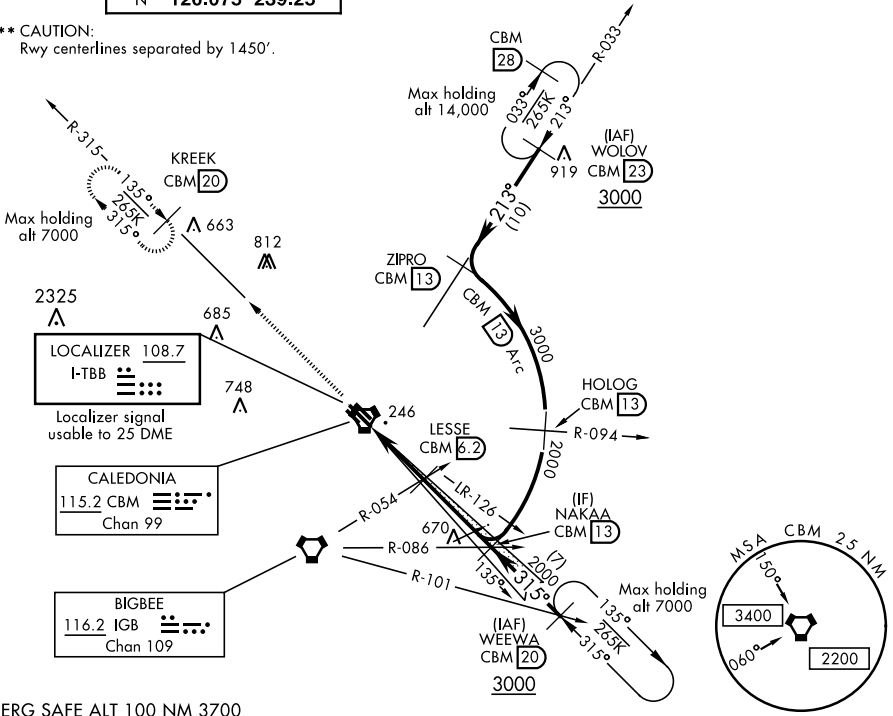
▼ * When ALS inop, increase RVR to 40, vis to 3/4 mile.
 ** When ALS inop, increase RVR to 55, vis to 1 mile.



MISSED APPROACH: Climb heading 315° to intercept the VOR/TAC CBM R-315 outbound to KREEK (CBM R-315/20) and hold. Maintain 4000.

ATIS 115.2 273.5	COLUMBUS APP CON SE 134.55 350.3 SW 135.6 323.275 N 126.075 239.25	COLUMBUS TOWER 126.65 379.925	GND CON 121.9 275.8	CLNC DEL 269.55
----------------------------	--	---	-------------------------------	---------------------------

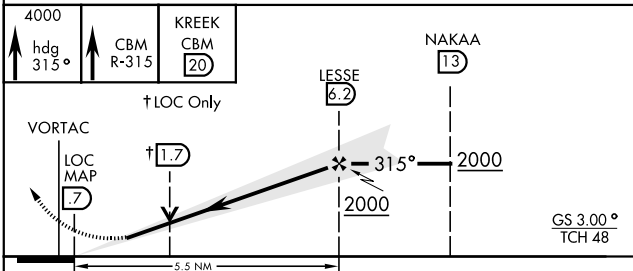
*** CAUTION:
Rwy centerlines separated by 1450'.



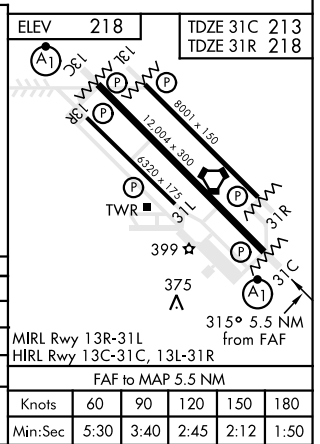
SC-4, 16 JUL 2020 to 13 AUG 2020

SC-4, 16 JUL 2020 to 13 AUG 2020

EMERG SAFE ALT 100 NM 3700



CATEGORY	A	B	C	D	E
S-ILS 31C *	413/24		200	(200-1/2)	
S-LOC 31C **	580/24	367	580/35		367 (400-3/4)
SIDESTEP RWY 31R ***	580/55		362	(400-1)	
CIRCLING	740-1	522 (600-1)	760-1 1/2 542 (600-1 1/2)	780-2 562 (600-2)	1220-3 1002 (1100-3)



COLUMBUS, MISSISSIPPI
Amdt 1 27FEB20

33° 39' N-88° 27' W

COLUMBUS AFB (KCBM)

ILS or LOC RWY 31C

SC-4, 16 JUL 2020 to 13 AUG 2020