

COLUMBUS, MISSISSIPPI

VOR/DME B

VORTAC CBM <b>115.2</b> Chan <b>99</b>	APCH CRS <b>359°</b>	Rwy Idg THRE Arprt Elev <b>N/A</b> <b>N/A</b> <b>218</b>
--	-------------------------	---

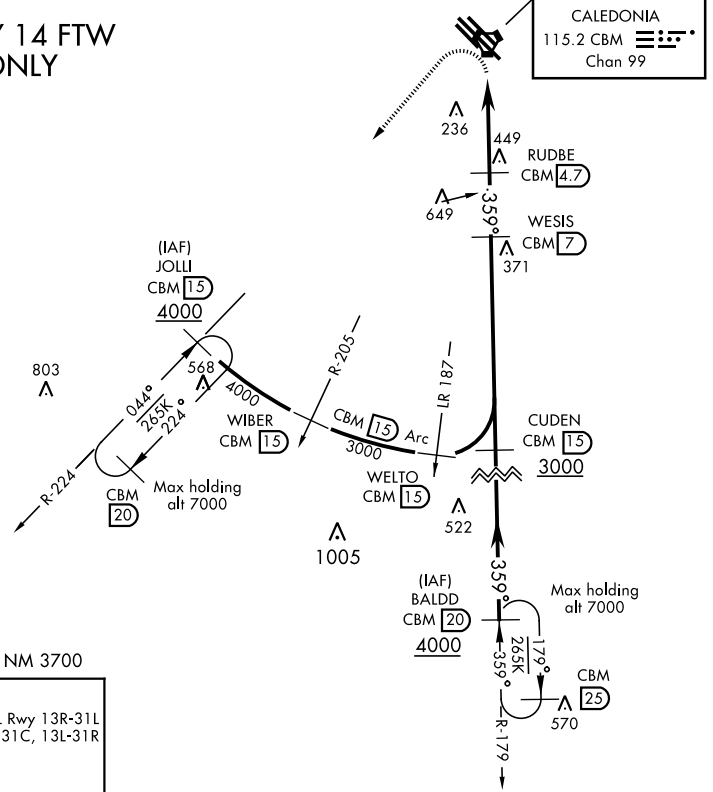
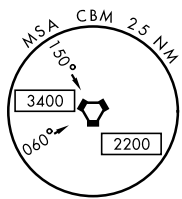
AL-91 [USAF]

COLUMBUS AFB (KCBM)

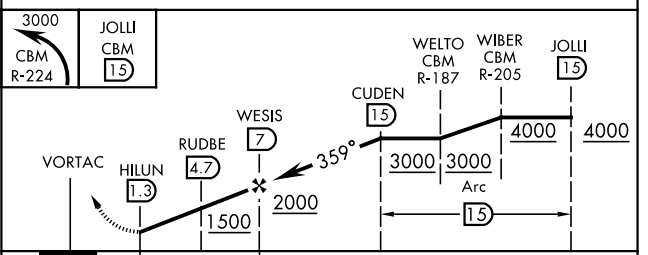
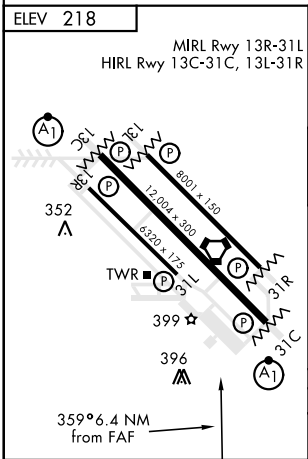
\* Circling authorized to Rwy 13R/Rwy 31L only. MISSED APPROACH: Climbing left turn to intercept the CBM R-224 outbound to JOLLI (CBM R-224/15) and hold. Maintain 3000.

ATIS <b>115.2 273.5</b>	COLUMBUS APP CON SE <b>134.55 350.3</b> SW <b>135.6 323.275</b> N <b>126.075 239.25</b>	COLUMBUS TOWER <b>126.65 379.925</b>	GND CON <b>121.9 275.8</b>	CLNC DEL <b>269.55</b>
----------------------------	--	---	-------------------------------	---------------------------

FOR USE BY 14 FTW  
ACFT ONLY



EMERG SAFE ALT 100 NM 3700



CATEGORY	A	B	C
<b>C</b> CIRCLING *	780-1	562 (600-1)	780-1½ 562 (600-1½)

COLUMBUS, MISSISSIPPI  
Amdt 6 24JUL14

33° 39' N-88° 27' W

COLUMBUS AFB (KCBM)

VOR/DME B

SC-4, 16 JUL 2020 to 13 AUG 2020

SC-4, 16 JUL 2020 to 13 AUG 2020