

COLUMBUS, MISSISSIPPI

# VOR/DME or TACAN RWY 13L

VORTAC CBM <b>115.2</b> Chan <b>99</b>	APCH CRS <b>142°</b>	Rwy ldg THRE <b>192</b> Arprt Elev <b>218</b>
--	-------------------------	---

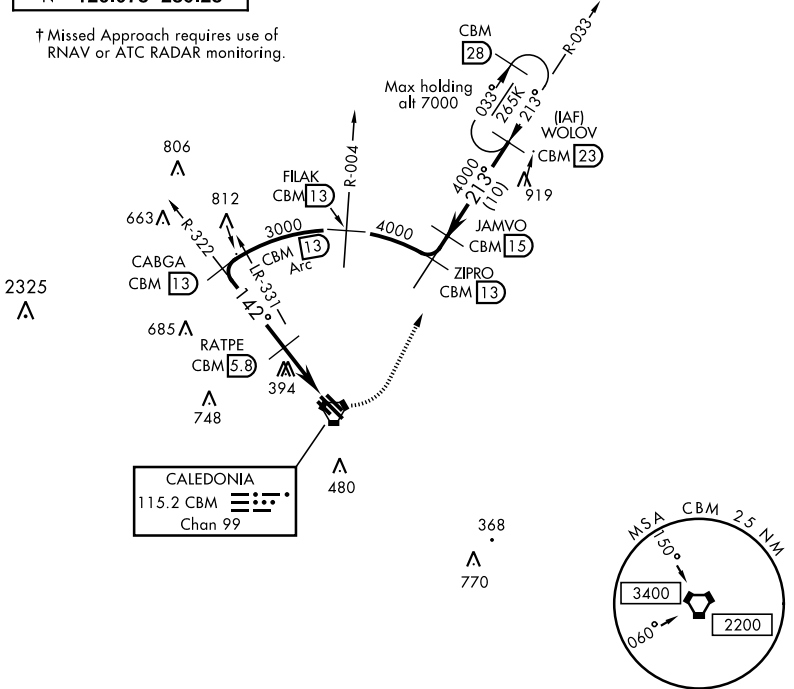
AL-91 [USAF]

COLUMBUS AFB (KCBM)

† MISSED APPROACH: Climbing left turn to WOLOV and hold as published. Maintain 3000.

ATIS <b>115.2 273.5</b>	COLUMBUS APP CON SE <b>134.55 350.3</b> SW <b>135.6 323.275</b> N <b>126.075 239.25</b>	COLUMBUS TOWER <b>126.65 379.925</b>	GND CON <b>121.9 275.8</b>	CLNC DEL <b>269.55</b>
----------------------------	--	---	-------------------------------	---------------------------

† Missed Approach requires use of RNAV or ATC RADAR monitoring.



EMERG SAFE ALT 100 NM 3700

	ELEV 218		THRE 192					
	WOLOV R-033 23	JAMVO 15	ZIPRO 13	FILAK R-004 13	CABGA R-322 13	RATPE 5.8	JAMUX 1.5	VORTAC
	4000	213°	4000	3000	142°	1700	4.3 NM	0.4
	2.92° TCH 39		Arc 13					
CATEGORY	A	B	C	D	E			
S-13L	680/55	487 (500-1)	680-1 3/8	487 (500-1 1/8)				
CIRCLING	780-1	562 (600-1)	800-1 1/2 582 (600-1 1/2)	820-2 602 (700-2)	1240-3 1022 (1100-3)			
						MIRL Rwy 13R-31L HIRL Rwy 13C-31C, 13L-31R		

COLUMBUS, MISSISSIPPI

33° 39' N-88° 27' W

COLUMBUS AFB (KCBM)

Orig 05JAN17

# VOR/DME or TACAN RWY 13L

SC-4, 16 JUL 2020 to 13 AUG 2020

SC-4, 16 JUL 2020 to 13 AUG 2020